

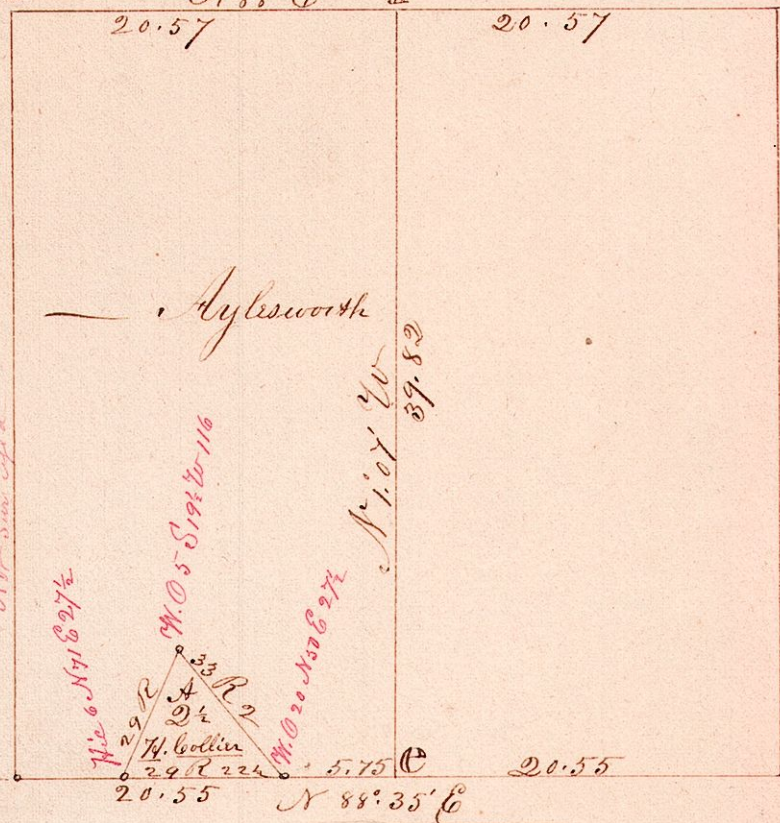
N.E. D² 29 Sp 18 Range 14 (Ripley T.)

Nick Roy 15 }
N 87 1/2 E 20 } A

W. Elm 12 N 11 1/2 E 134

N 88 E f

B



N. S. Survey

N. S. Survey

Stone

{ W. Oak 20 N 26 1/2 E 44
50 18 S 23 1/2 E 72

(Nick Roy 10. N 39 W 51)

Surveyed the above D² for Henry Collin and
Aylesworth
Oct 1851 J. Wilcott, (Co. S 76 Co.)