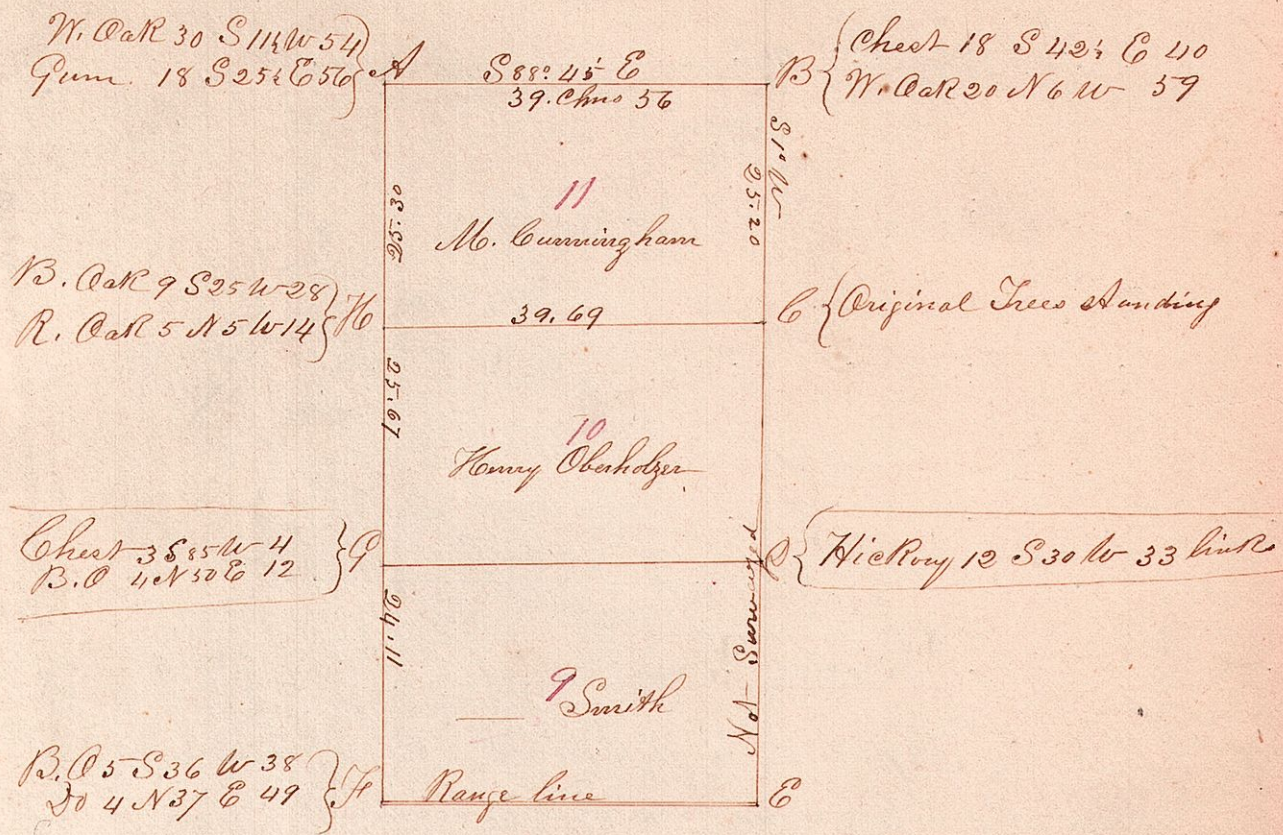


Lots 9, 10, & 11 (Sp 9 R 9. 1<sup>st</sup> q. Sp)



Surveyed the above named Lots at different times in the Year 1850 for — Smith, H. Oberholzer & M. Cunningham  
 The S.W. corner of Lot 9 Bearing & decayed. The N.W. corner made by running cross lines.  
 The N.W. corner of Lot 10 made by the cross lines.  
 The remaining corners good —  
 Jackson Silcott, C. Sawyer