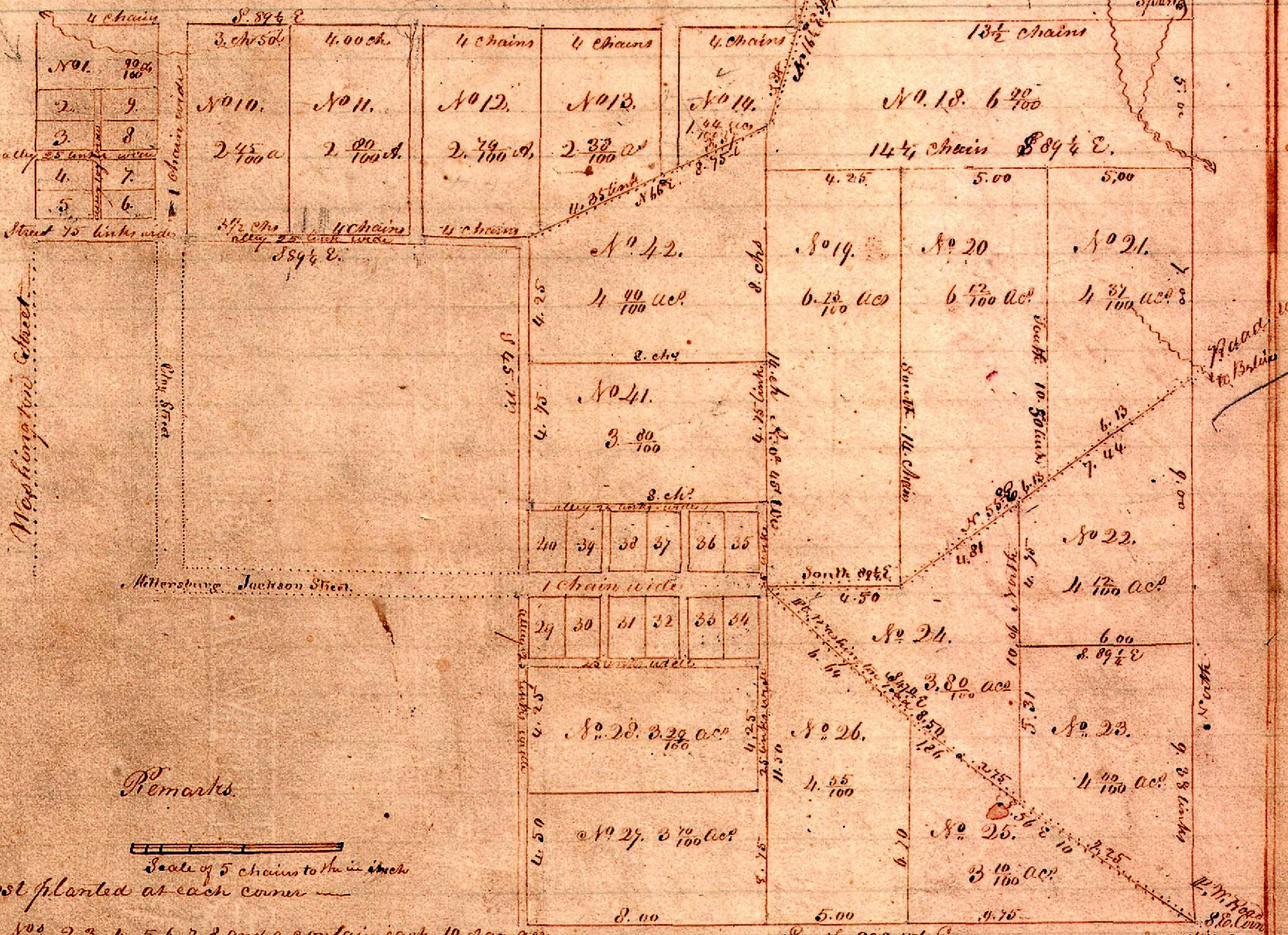


Second Addition to the town of Millersburg

7.13

264
10
2) 250 127

See Surveyors Plat Book 5 p 186



Remarks

Scale of 5 chains to the inch

Post planted at each corner

Lots Nos 2, 3, 4, 5, 6, 7, 8, and 9 contain each 1/100 of an acre

Lots Nos 29, 30, 31, 32, 33, 34, 35, 36, 37, 38, 39 & 40 contain 2/100 of an acre

The bearings and distances at the corners are decayed and a post planted at the corner

I do hereby certify the above to be a correct Plat and Notes of the East part and part of the South part of the South East Quarter of Section 12 in Township Nine of Range seven in Holmes County Ohio. Surveyed April 28th 1837 Samuel Nelson Surveyor

Presented for record in this Office June 15. 1837 and recorded June 17. 1837

(D. P. Leavelle) Recorder

Surveyors Plat Book 5 p 186

7.5 37.00 120