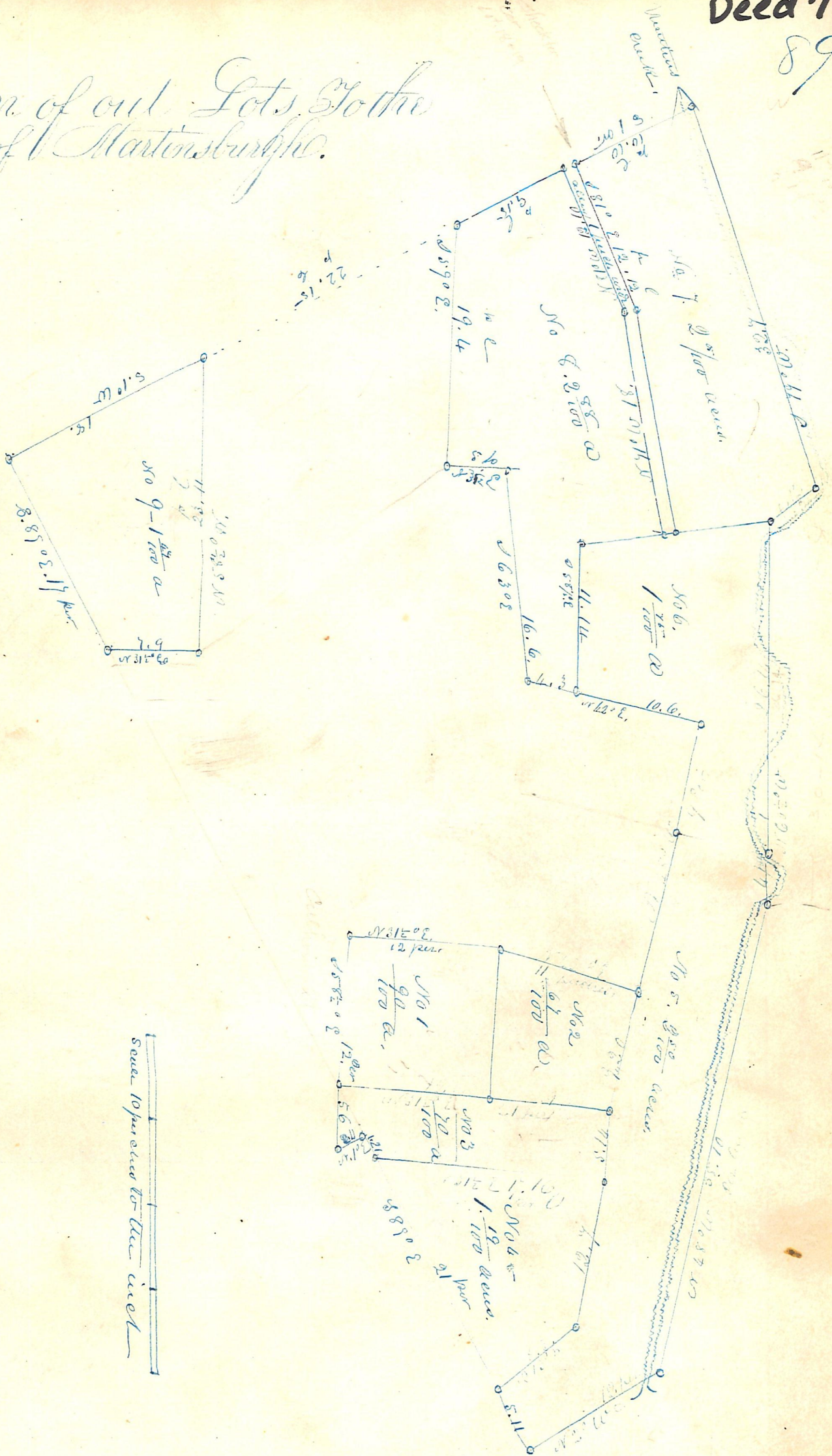


Plan of out Lots to the Town of Martinsburgh.



The above plan of out lots are situated on the north West part of lot numbered 18 in Township 10 of Range 6 Section 11. and adjoining the town part of lots of Martinsburgh. The number of each lot the quantity, contained therein the course and distance of each line (in paces and links) can be seen by Reference to the above plat corner stones placed at the corner of each lot Dec. 10 A.D. 1840.

Samuel Robinson Geo Surveyor -