

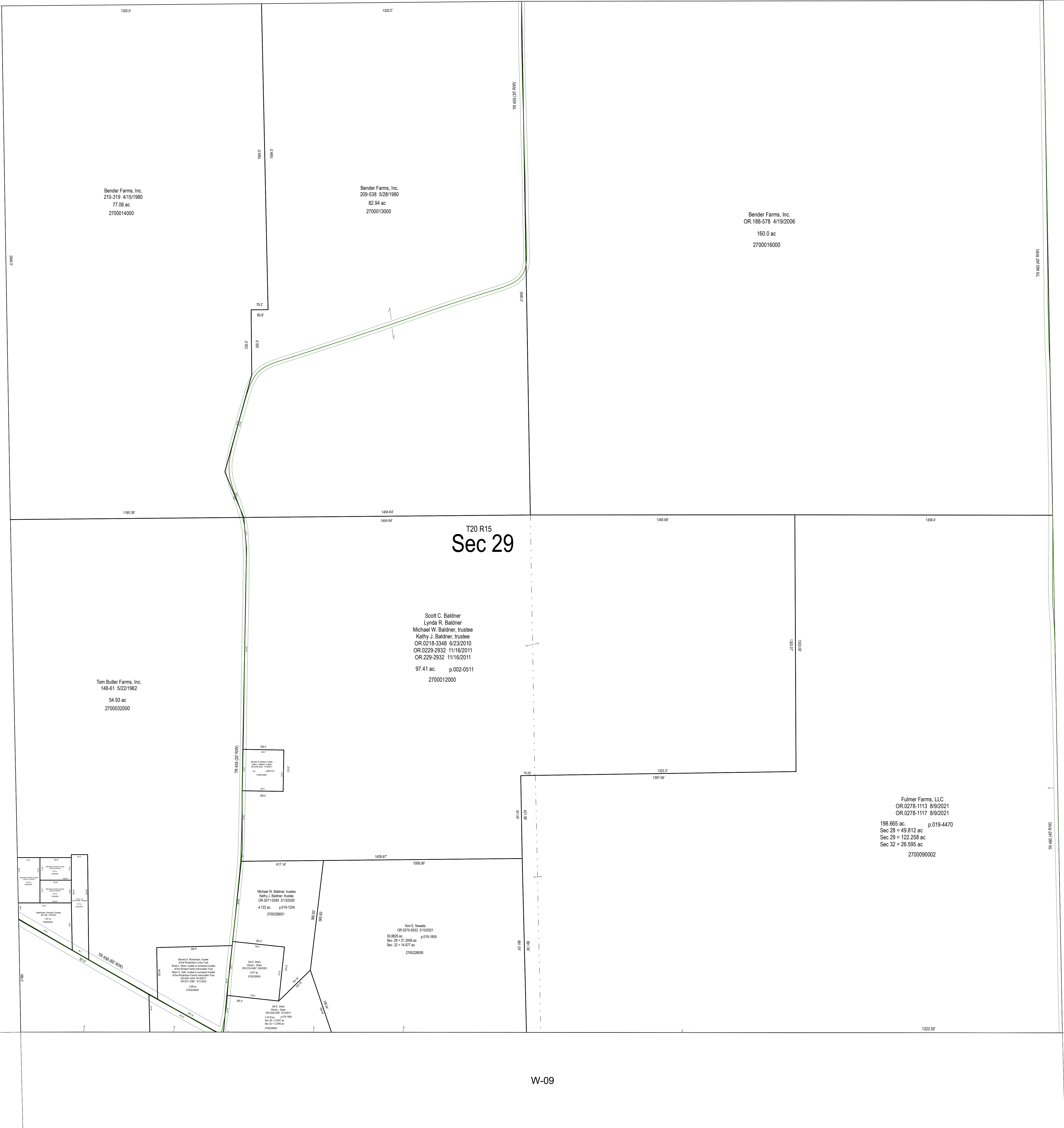
W-05

W-15

W-04

W-09

W-14



Bender Farms, Inc.  
210-319 4/15/1980  
77.06 ac  
2700014000

Bender Farms, Inc.  
209-538 5/28/1980  
82.94 ac  
2700013000

Bender Farms, Inc.  
OR.188-578 4/19/2006  
160.0 ac  
2700016000

T20 R15  
Sec 29

Scott C. Baldner  
Lynda R. Baldner  
Michael W. Baldner, trustee  
Kathy J. Baldner, trustee  
OR.0218-3348 6/23/2010  
OR.0229-2932 11/16/2011  
OR.0229-2932 11/16/2011  
97.41 ac. p.002-0511  
2700012000

Tom Butler Farms, Inc.  
148-61 5/22/1962  
54.93 ac  
2700032000

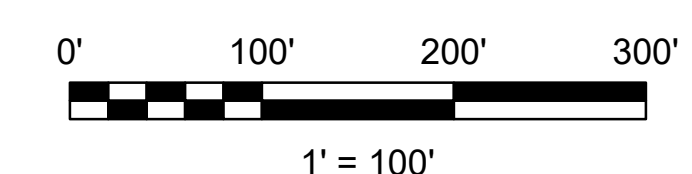
Fulmer Farms, LLC  
OR.0278-1113 8/9/2021  
OR.0278-1117 8/9/2021  
p.019-4470  
198.665 ac  
Sec 28 = 49.812 ac  
Sec 29 = 122.258 ac  
Sec 32 = 26.595 ac  
2700090002

Kim E. Nowels  
OR.0278-5833 2/10/2021  
31.8928 ac. p.019-1885  
Sec 29 = 21.2395 ac  
Sec 32 = 14.657 ac  
2700228000

Sheila A. Schaeffer, trustee  
of the Washington Twp. Trust  
OR.0218-3348 6/23/2010  
OR.0229-2932 11/16/2011  
OR.0229-2932 11/16/2011  
3.08 ac  
2700028000

Michael W. Baldner trustee  
Kathy J. Baldner, trustee  
OR.0218-3348 6/23/2010  
4.722 ac. p.019-1504  
2700228001

John C. Dyer  
OR.0218-3348 6/23/2010  
4.235 ac. p.019-1504  
Sec 29 = 1.407 ac  
Sec 32 = 2.828 ac  
2700228002



LET IT BE KNOWN, THIS MAP HAS BEEN PREPARED AS A REFERENCE GUIDE TO PROPERTY OWNERSHIP. WE BELIEVE THIS INFORMATION TO BE CORRECT AND CURRENT. HOWEVER, IT IS NOT INTENDED FOR ANY LEGAL USE, WHETHER IT BE SALES, TRANSFERS, TRADES, LEASES OF ANY TYPE, ETC. AND DO NOT ACCEPT RESPONSIBILITY FOR ERRORS OF ANY NATURE OR OMISSIONS CONTAINED HEREIN.

S.F.T.  
new survey required  
for next transfer

Last Revision: 1/3/2023



Sec. 29, T-20, R-15  
Washington Twp.  
Holmes County, Ohio

**W-10**