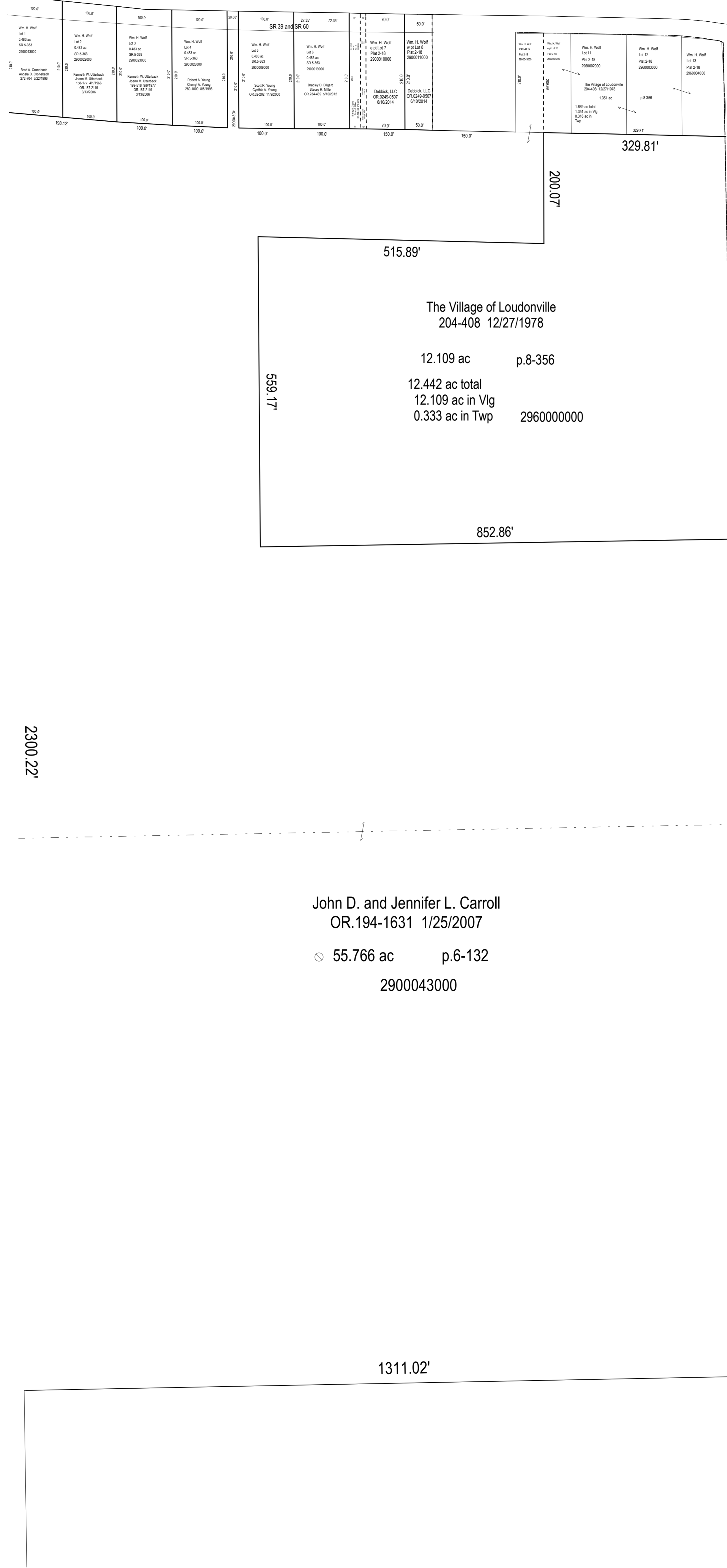
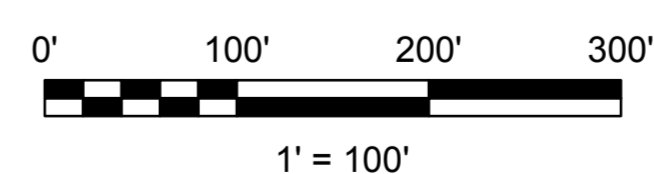


W-03B



The Village of Loudonville
 204-408 12/27/1978
 12.109 ac p.8-356
 12.442 ac total
 12.109 ac in Vlg
 0.333 ac in Twp 2960000000

John D. and Jennifer L. Carroll
 OR.194-1631 1/25/2007
 55.766 ac p.6-132
 2900043000



LET IT BE KNOWN, THIS MAP HAS BEEN PREPARED AS A REFERENCE GUIDE TO PROPERTY OWNERSHIP. WE BELIEVE THIS INFORMATION TO BE CORRECT AND CURRENT, HOWEVER IT IS NOT INTENDED FOR ANY LEGAL USE, WHETHER IT BE SALES, TRANSFERS, TRADES, LEASES OF ANY TYPE, ETC. AND DO NOT ACCEPT RESPONSIBILITY FOR ERRORS OF ANY NATURE OR OMISSIONS CONTAINED HEREIN.

S.F.T.
 new survey required for next transfer

Last Revision: 12/31/2015

W-03

Loudonville (S part)
 Sec. 6, T-19, R-15
 Washington Twp.
 Holmes County, Ohio

W-03A