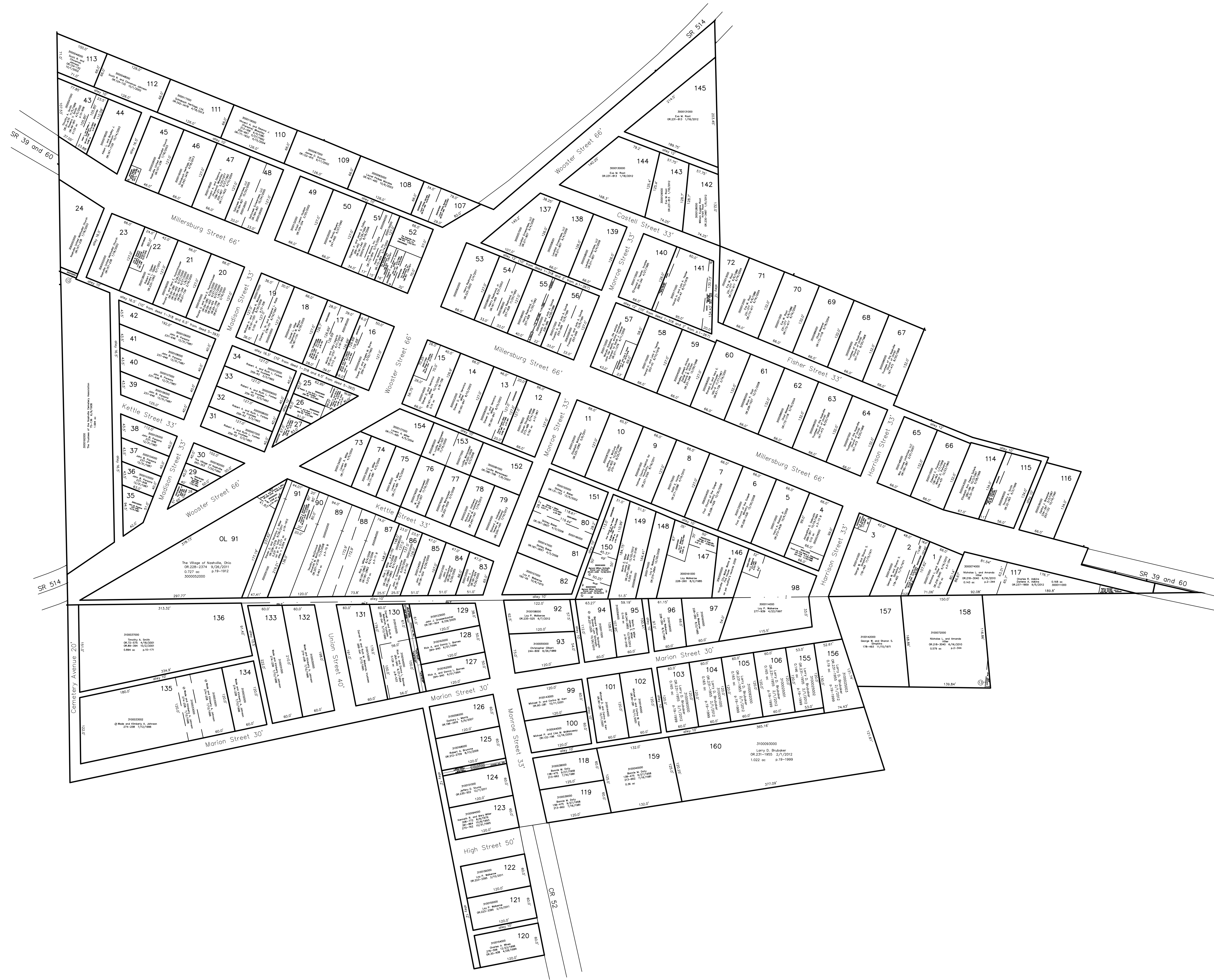


3000192001 ⑫ Nashville United Methodist Church  
 OR.157-238 7/18/2003  
 0.006 ac p.17-441

3100072002 ⑬ Charles R. Adkins  
 Darlene A. Adkins  
 OR.237-1859 8/5/2012  
 0.006 ac p.19-1703

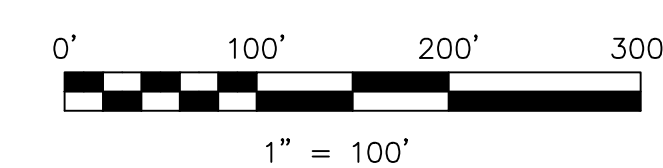


"Incorporated Village of Nashville" plat 1-256 Dec.3, 1881

- Lots 1 through 7 and lots 60 through 71 "Addition to the Town of Nashville" deed 7-306 Jan.4, 1841
- Lots 8 through 23 and lots 45 through 59 "Plat of the Town of Nashville" deed 1-318 Jul.1, 1828
- Lots 25 through 42 "First Addition of Inlots" deed 5-393 Apr.25, 1839
- Lots 92 through 106 and lot 155 "Nathan H. Jones Add to Nashville" plat 1-140 May.7, 1874
- Lots 107 through 113 "Joseph Castles Addition to Nashville" plat 1-143 Jul.8, 1874
- Lots 120 through 129 "Hoyer's 1st Addition to Nashville" plat 1-259 Mar.27, 1883
- Lots 130 through 136 "Barney E. Hoyer's 2nd Addition to the Town of Nashville" plat 1-260 Aug.22, 1883
- Lots 137 through 145 "Joseph Castell's 2nd Addition to the Village of Nashville" plat 1-267 Feb.27, 1885

Last Revision: 7/19/2013

**Nashville Village**  
**\*incorporated\***  
**T-19, R-15, Sec.24**  
**Knox Twp.**  
**T-19, R-15, Sec.13**  
**Washington Twp.**  
**Holmes County, Ohio**



LET IT BE KNOWN, THIS MAP HAS BEEN PREPARED AS A REFERENCE GUIDE TO PROPERTY OWNERSHIP. WE BELIEVE THIS INFORMATION TO BE CORRECT AND CURRENT, HOWEVER IT IS NOT INTENDED FOR ANY LEGAL USE, WHETHER IT BE IN SALES, TRANSFERS, TRUSTS, LEASES OF ANY TYPE, ETC., AND DO NOT ACCEPT RESPONSIBILITY FOR ERRORS OF ANY NATURE OR OMISSIONS CONTAINED HEREIN.

⊗ new survey required  
 for next transfer

**W-26A**

