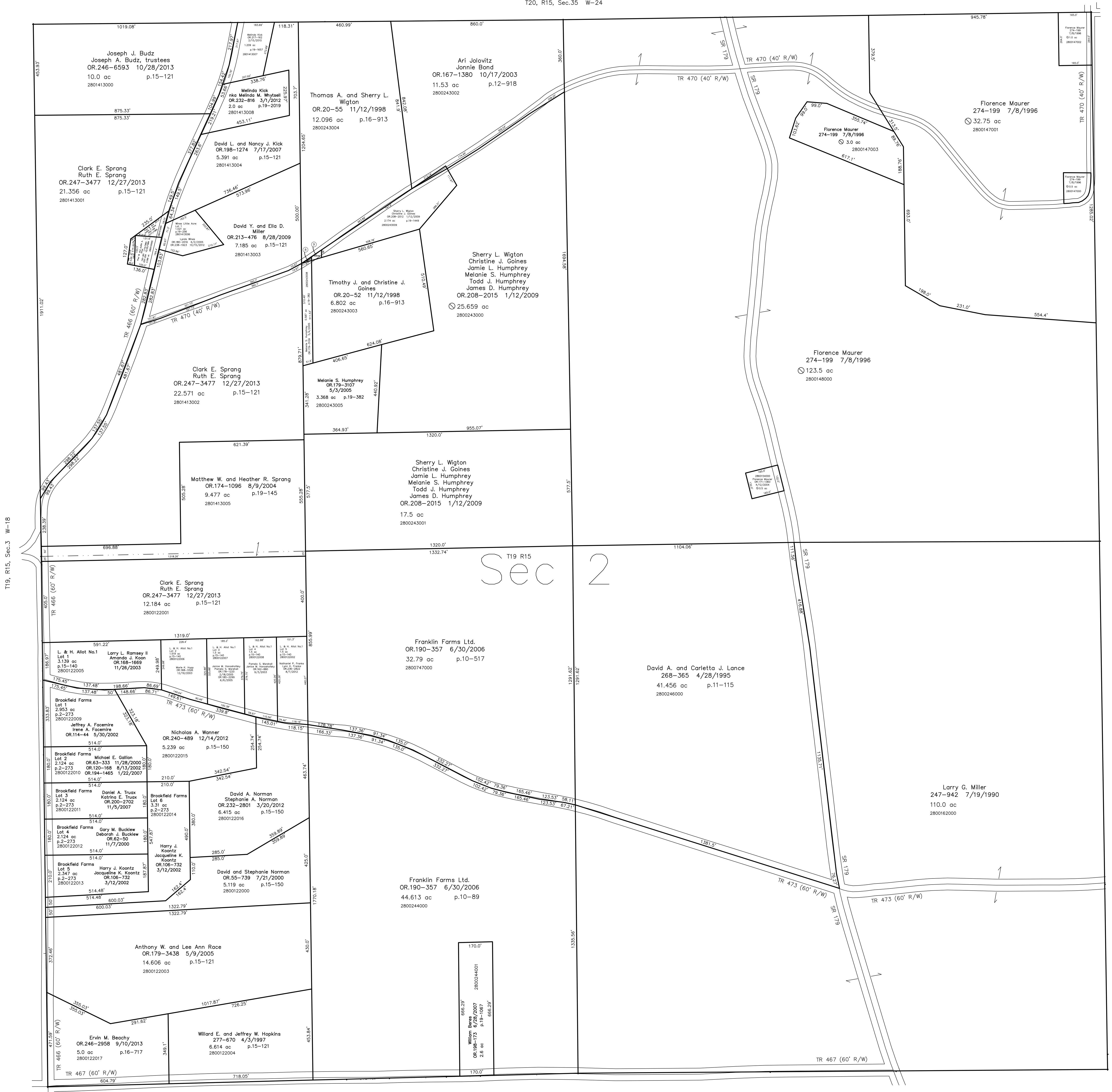


2800243007 (B) Melanie S. Humphrey
OR.179-3113 5/4/2005
0.031 ac p.19-382
2800243006 (D) Timothy J. Gaines and Christine J. Gaines
OR.179-3111 5/4/2005
0.033 ac p.19-382



T19, R15, Sec.3 W-18

T19, R15, Sec.1 W-28

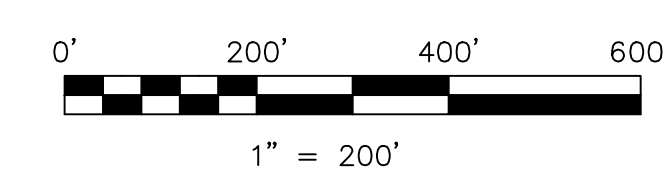
Sec 2

Brookfield Farms
Plot 2-273 Platted 8/29/1997
L. & H. Allotment No.1
Plot 15-140 Platted 8/5/1997
Wines Little Acre Subdivision
Plot 19-256 Platted 11/29/2004

Last Revision: 12/27/2013

T-19, R-15, Sec. 2
Washington Twp.
Holmes County, Ohio

W-23



LET IT BE KNOWN, THIS MAP HAS BEEN PREPARED AS A REFERENCE GUIDE TO PROPERTY OWNERSHIP. WE BELIEVE THIS INFORMATION TO BE CORRECT AND CURRENT, HOWEVER IT IS NOT INTENDED FOR ANY LEGAL USE, WHETHER IT BE IN SALES, TRANSFERS, TRADES, LEASES OF ANY TYPE, ETC., AND DO NOT ACCEPT RESPONSIBILITY FOR ERRORS OF ANY NATURE OR OMISSIONS CONTAINED HEREIN.

new survey required for next transfer