

Ashland County Hanover Township T19, R16, Sec.13

Ashland County CR 529

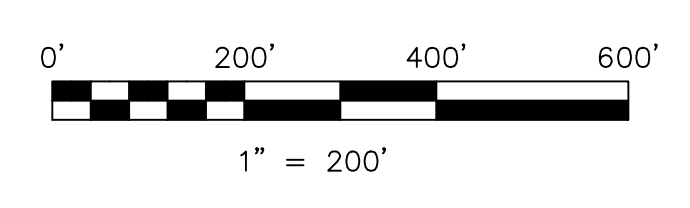
Ashland County CR 3175

T19, R15, Sec.17 W-06

Last Revision: 12/27/2013

**T-19, R-15, Sec. 18**  
**Washington Twp.**  
**Holmes County, Ohio**

# W-01



LET IT BE KNOWN, THIS MAP HAS BEEN PREPARED AS A REFERENCE GUIDE TO PROPERTY OWNERSHIP. WE BELIEVE THIS INFORMATION TO BE CORRECT AND CURRENT, HOWEVER IT IS NOT INTENDED FOR ANY LEGAL USE, WHETHER IT BE IN SALES, TRANSFERS, TRADES, LEASES OF ANY TYPE, ETC., AND DO NOT ACCEPT RESPONSIBILITY FOR ERRORS OF ANY NATURE OR OMISSIONS CONTAINED HEREIN.

⊕ new survey required for next transfer