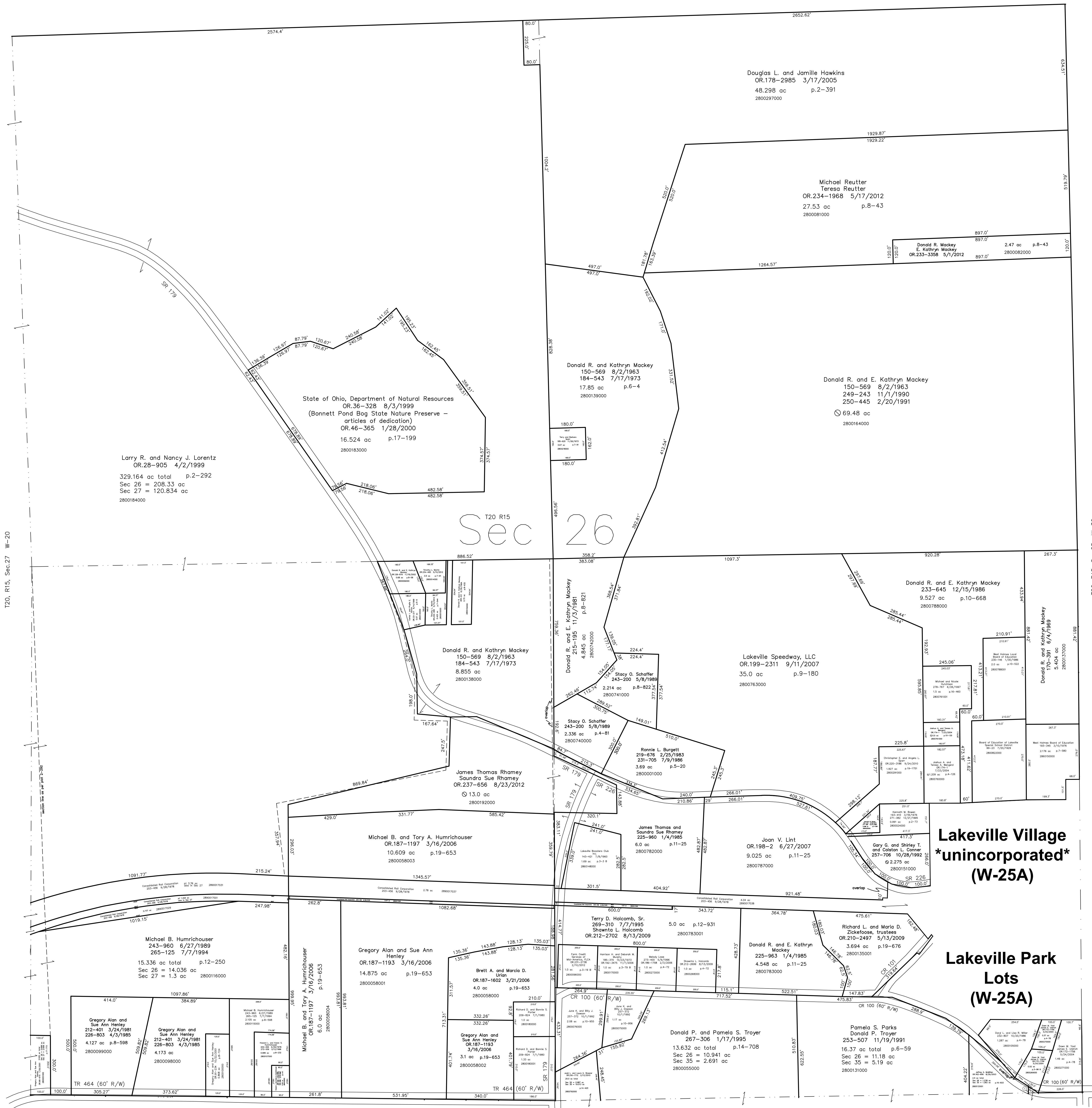


2800133000 Donald P. and Pamela S. Troyer
OR.218-167 5/6/2010
0.026 ac p.16-796



T20, R15, Sec.27 W-20

T20, R15, Sec.25 W-30

T20 R15 Sec 26

**Lakeville Village
unincorporated
(W-25A)**

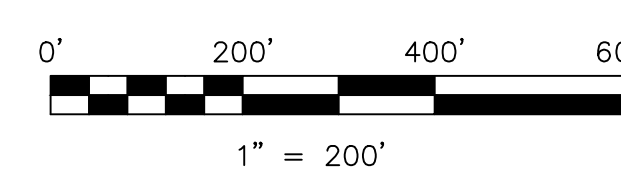
**Lakeville Park
Lots
(W-25A)**

T20, R15, Sec.35 W-24

Last Revision: 8/23/2012

**T-20, R-15, Sec. 26
Washington Twp.
Holmes County, Ohio**

W-25



LET IT BE KNOWN, THIS MAP HAS BEEN PREPARED AS A REFERENCE GUIDE TO PROPERTY OWNERSHIP. WE BELIEVE THIS INFORMATION TO BE CORRECT AND CURRENT, HOWEVER IT IS NOT INTENDED FOR ANY LEGAL USE, WHETHER IT BE IN SALES, TRANSFERS, TRADES, LEASES OF ANY TYPE, ETC., AND DO NOT ACCEPT RESPONSIBILITY FOR ERRORS OF ANY NATURE OR OMISSIONS CONTAINED HEREIN.

new survey required for next transfer