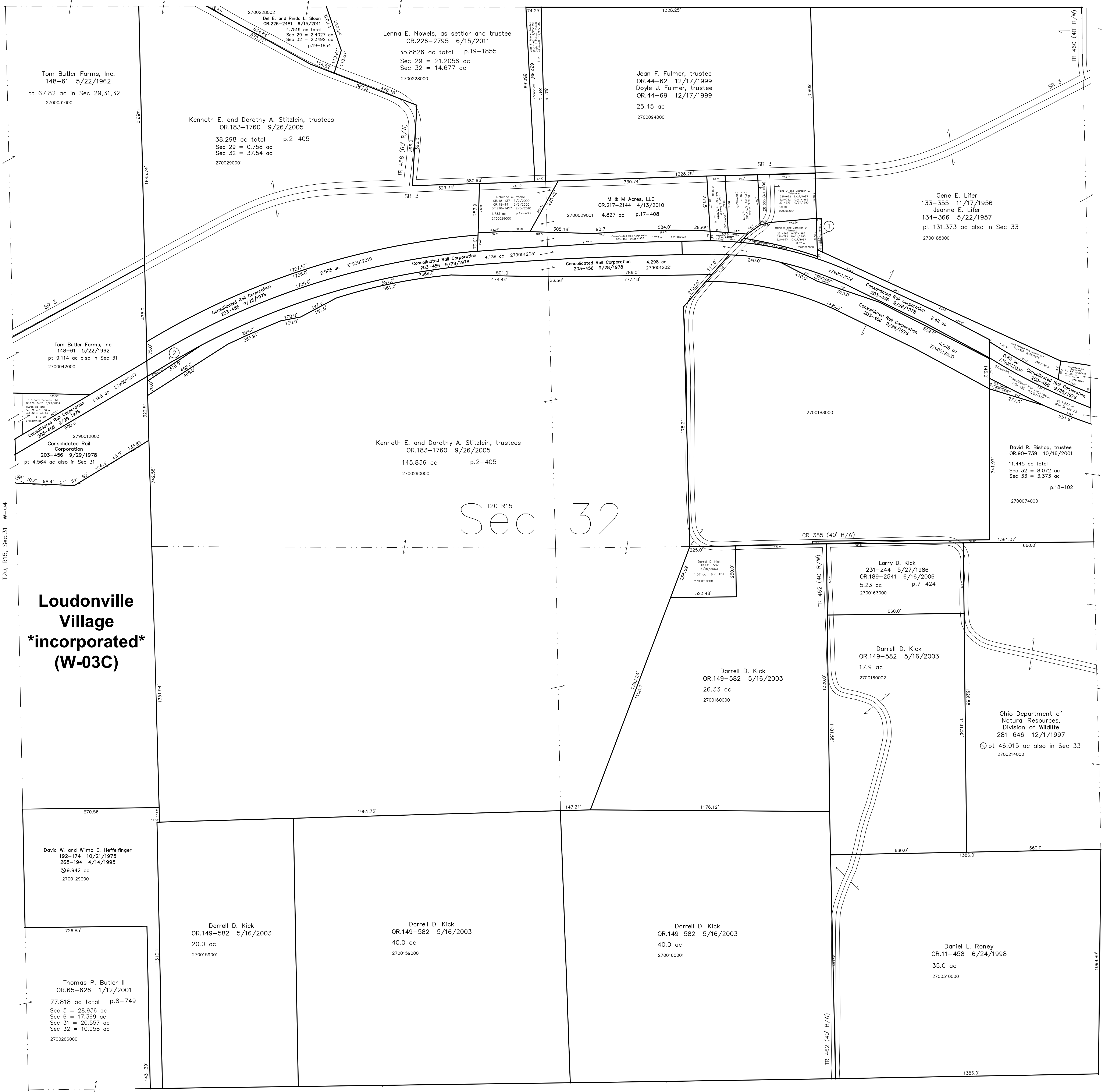


2700188001 ① Heinz O. and Cathleen D. Thiemens
253-115 10/16/1991
0.092 ac p.13-140
2790012011 ② Consolidated Rail Corporation
203-456 9/29/1978
0.132 ac

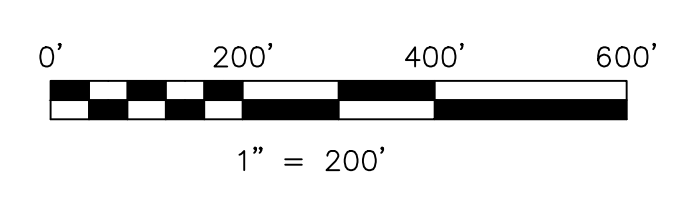


T20, R15, Sec.31 W-04

T20, R15, Sec.33 W-14

Sec 32

**Loudonville Village
incorporated
(W-03C)**



LET IT BE KNOWN, THIS MAP HAS BEEN PREPARED AS A REFERENCE GUIDE TO PROPERTY OWNERSHIP. WE BELIEVE THIS INFORMATION TO BE CORRECT AND CURRENT, HOWEVER IT IS NOT INTENDED FOR ANY LEGAL USE, WHETHER IT BE IN SALES, TRANSFERS, TRADES, LEASES OF ANY TYPE, ETC., AND DO NOT ACCEPT RESPONSIBILITY FOR ERRORS OF ANY NATURE OR OMISSIONS CONTAINED HEREIN.

○ new survey required
○ for next transfer

Last Revision: 6/15/2011
T-20, R-15, Sec. 32
Washington Twp.
Holmes County, Ohio

W-09