

Loudonville Realty LLC  
 OR.204-3246 6/5/2008  
 44.14 ac total p.19-1318  
 Sec 6 = 4.076 ac  
 Sec 31 = 40.064 ac  
 2900029000

Thomas F. and Cheryl A. Thompson  
 246-114 2/2/1990  
 1.883 ac total p.12-367  
 Sec 6 = 0.041 ac  
 Sec 31 = 1.842 ac  
 2900032000

Thomas F. and Cheryl A. Thompson  
 221-531 9/15/1983  
 230-152 1/30/1986  
 2.06 ac  
 2900033000

Thomas F. and Cheryl A. Thompson  
 221-531 9/15/1983  
 230-152 1/30/1986  
 3.289 ac  
 2900031000

Eleanor A. and Thomas Ford Thompson  
 263-928 3/30/1994  
 OR.128-779 11/8/2002  
 2.461 ac total p.12-292  
 Sec 6 = 2.453 ac  
 Sec 31 = 0.008 ac  
 2900029001

T20, R15, Sec.31  
 T19, R15, Sec.6

Baker Properties-Ashland, Ltd.  
 OR.173-1322 6/28/2004  
 5.0 ac total p.17-278  
 Sec 6 = 3.389 ac  
 Sec 31 = 1.611 ac  
 2900029002

Baker Properties-Ashland, Ltd.  
 OR.170-1493 3/4/2004  
 7.049 ac p.19-7  
 2900045000

part of Sec.6  
 not incorporated  
 (W-03)

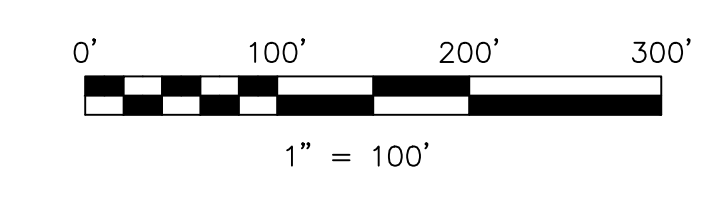
See W-03A for adjacent map

- △ Workman Allotment Section No.1  
 Plat 2-121 Platted 8/3/1965
- ☆ Workman Allotment Section A  
 Plat 4-49 Platted 2/10/1965
- ◇ Loudonville Industrial Sites - Phase 1  
 Plat 2-220 Platted 6/11/1990
- ◇ Larry P. Kouffman Allotment No.1  
 Plat 15-49 Platted 3/2/1995
- ◇ Larry P. Kouffman Allotment No.2  
 Plat 15-83 Platted 4/15/1996
- ◇ Larry P. Kouffman Allotment No.3  
 Plat 15-84 Platted 4/15/1996

Last Revision: 2/17/2007

**Loudonville Village (nw part)**  
**\*incorporated\***  
**T-19, R-15, Sec.6**  
**T-20, R-15, Sec.31**  
**Washington Twp.**  
**Holmes County, Ohio**

**W-03B**



LET IT BE KNOWN, THIS MAP HAS BEEN PREPARED AS A REFERENCE GUIDE TO PROPERTY OWNERSHIP. WE BELIEVE THIS INFORMATION TO BE CORRECT AND CURRENT, HOWEVER IT IS NOT INTENDED FOR ANY LEGAL USE, WHETHER IT BE IN SALES, TRANSFERS, TRADES, LEASES OF ANY TYPE, ETC., AND DO NOT ACCEPT RESPONSIBILITY FOR ERRORS OF ANY NATURE OR OMISSIONS CONTAINED HEREIN.

○ new survey required for next transfer

See W-03C for adjacent map

