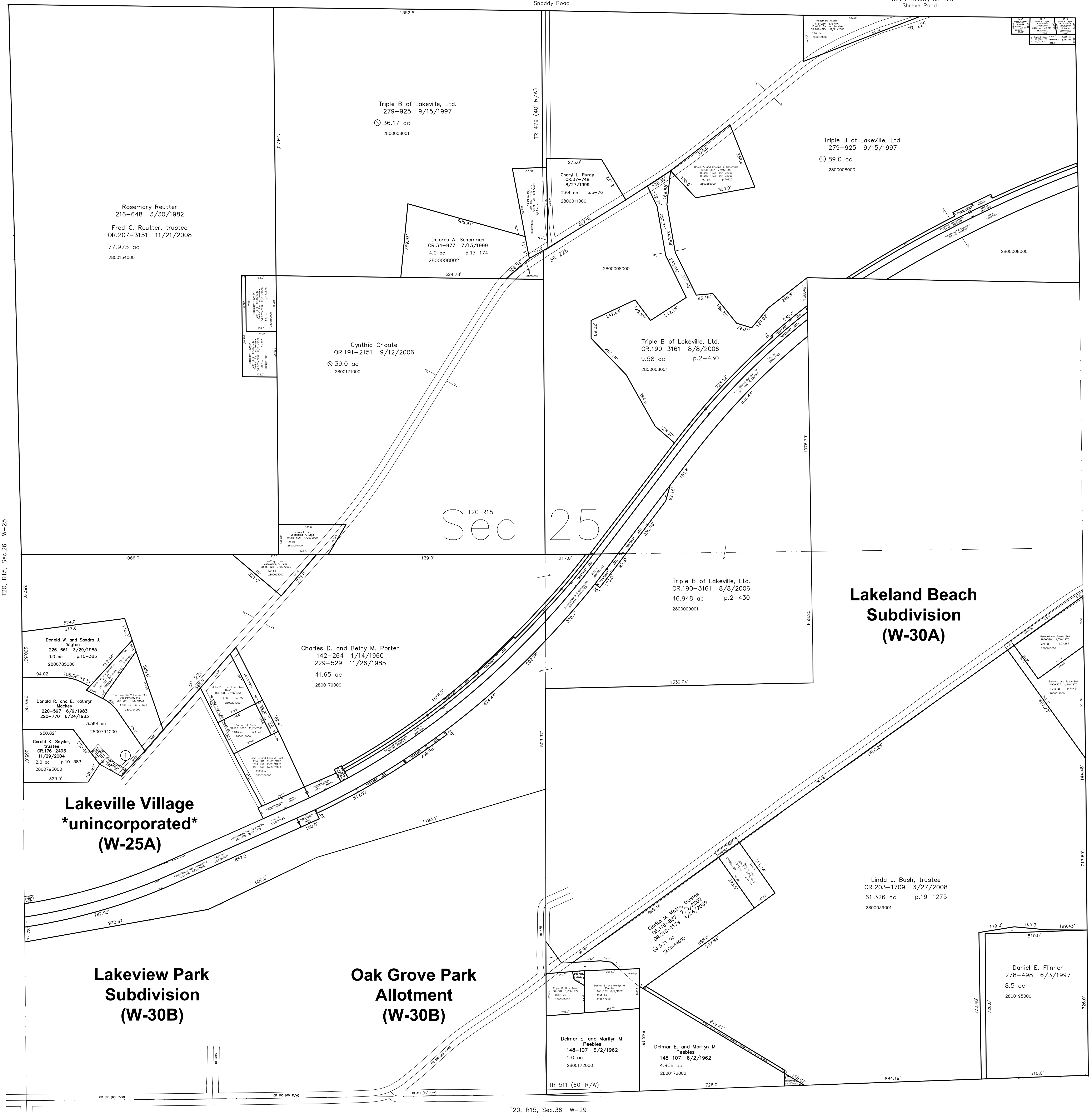


2860146001 Donald R. and E. Kathryn Mackey
235-449 6/5/1987
0.009 ac p.10-752



T20, R15, Sec.26 W-25

Ripley Township T18, R14, Sec.30 RP-05

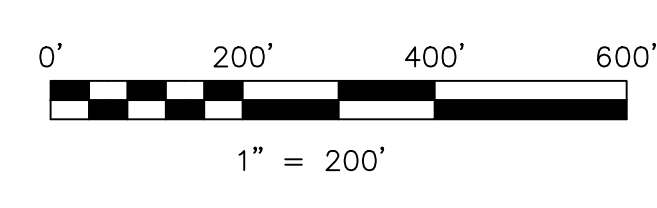
Sec 25

**Lakeville Village
unincorporated
(W-25A)**

**Lakeview Park
Subdivision
(W-30B)**

**Oak Grove Park
Allotment
(W-30B)**

**Lakeland Beach
Subdivision
(W-30A)**



LET IT BE KNOWN, THIS MAP HAS BEEN PREPARED AS A REFERENCE GUIDE TO PROPERTY OWNERSHIP. WE BELIEVE THIS INFORMATION TO BE CORRECT AND CURRENT, HOWEVER IT IS NOT INTENDED FOR ANY LEGAL USE, WHETHER IT BE IN SALES, TRANSFERS, TRADES, LEASES OF ANY TYPE, ETC., AND DO NOT ACCEPT RESPONSIBILITY FOR ERRORS OF ANY NATURE OR OMISSIONS CONTAINED HEREIN.

new survey required for next transfer

Last Revision: 9/11/2009
T-20, R-15, Sec. 25
Washington Twp.
Holmes County, Ohio

W-30