

LAKEVILLE LOTS

- Ept 1 2800357001  
Gerald K. Snyder trustee  
OR.176-2493 11/29/2004  
0.258 ac p.19-251
- Wpt 1 2800339000  
Adkins Eddy S  
OR.83-624 6/13/2000  
p.16-109
- 2 2800335000  
The Board of Education West Holmes  
Local School District  
DV.234-187 2/4/1987
- 3 2800343000  
The Board of Education West Holmes  
Local School District  
DV.234-750 4/6/1987
- 4 280149000  
The Board of Education West Holmes  
Local School District  
DV.234-500 4/4/1987
- 5 2800344000  
Lakeville Local Board of Education  
DV.123-527 3/24/1950  
DV.123-528 3/24/1950
- 6 280152000  
Board of Education Washington Township  
DV.45-156 9/5/1882  
1.60 ac
- 7 280034000  
Butcher Karen  
OR.144-592 4/7/2003  
0.183 ac p.16-595
- Ept 8 2800355000  
Bing Virgil  
OR.176-922 11/8/2004  
0.164 ac p.16-595
- Wpt 8 2800342000  
Wagner William  
DV.185-792 12/18/1973
- 9 2800348000  
Hamlin Ronald B  
OR.152-143 6/9/2003  
0.037 ac p.18-430
- 2800351000 10 Richard Zickelsose  
OR.188-391 4/17/2006
- 2800352000 11 Richard Zickelsose  
OR.188-391 4/17/2006  
0.21 ac p.19-676
- 2800353000 12 Richard Zickelsose  
OR.188-391 4/17/2006  
0.144 ac p.19-676
- 13 2800348000  
Hamlin Ronald B  
OR.152-143 6/9/2003  
0.041 ac p.18-430
- 14 2800348000  
Hamlin Ronald B  
OR.152-143 6/9/2003  
0.093 ac p.18-430
- Ept 15 2800326000  
Miller Ruth L  
DV.138-387 9/11/1958  
DV.160-79 10/8/1956
- Wpt 15 2800350000  
Hamlin Ronald B  
OR.152-143 6/9/2003  
0.064 ac p.18-430

LAKEVILLE LOTS

- NE 16 2800320000  
Cary D. Bradley, Jr.  
OR.70-602 3/27/2001  
OR.195-2868 3/30/2007  
0.523 ac p.17-650
- S&Wpt 16 2800307000  
Weaver Jason L & Candice J  
OR.87-231 9/12/2001  
p.16-109
- NE 17 2800320000  
Cary D. Bradley, Jr.  
OR.70-602 3/27/2001  
OR.195-2868 3/30/2007  
0.523 ac p.17-650
- SW 17 2800308000  
Weaver Jason L & Candice J  
OR.87-231 9/12/2001  
p.16-109
- 18 2800311000  
Read Donald E & Barbara A  
DV.270-263 9/4/1995
- Ept 19 2800788000  
Smith Bruce W  
OR.54-907 7/7/2000  
0.183 ac p.9-190
- MID 19 2800767000  
Smith Bruce W  
OR.54-907 7/7/2000  
0.305 ac p.9-190
- Wpt 19 2800787001  
Read Donald E & Barbara A  
OR.54-907 7/7/2000  
0.183 ac p.9-190
- 20 2800313000  
Smith Bruce W  
OR.54-907 7/7/2000  
0.082 ac p.9-190
- 21 2800342000  
Smith Bruce W  
OR.54-907 7/7/2000  
0.362 ac p.9-190
- 22 2800336000  
Gerald D. and Veronica F. Hochstetler  
OR.208-1414 8/26/2008  
0.676 ac p.19-1358
- 23 2800337000  
Gerald D. and Veronica F. Hochstetler  
OR.176-2434 11/29/2004  
0.71 ac p.19-1358
- 24 2800356000  
Robert L. Ross  
OR.202-1270 2/1/2008  
0.589 ac p.19-251
- 25 2800324000  
Jonathan A. Malcomb and Kathryn T. Church  
OR.208-288 8/7/2008  
0.62 ac p.18-145
- 26 2800310000  
Holly M. Graber  
OR.208-2516 9/12/2008  
0.686 ac p.19-1384
- 27 280156000  
Stuart Chapel Society of the  
Methodist Episcopal Church trustees  
DV.41-512 6/22/1885  
0.52 ac

LAKEVILLE LOTS

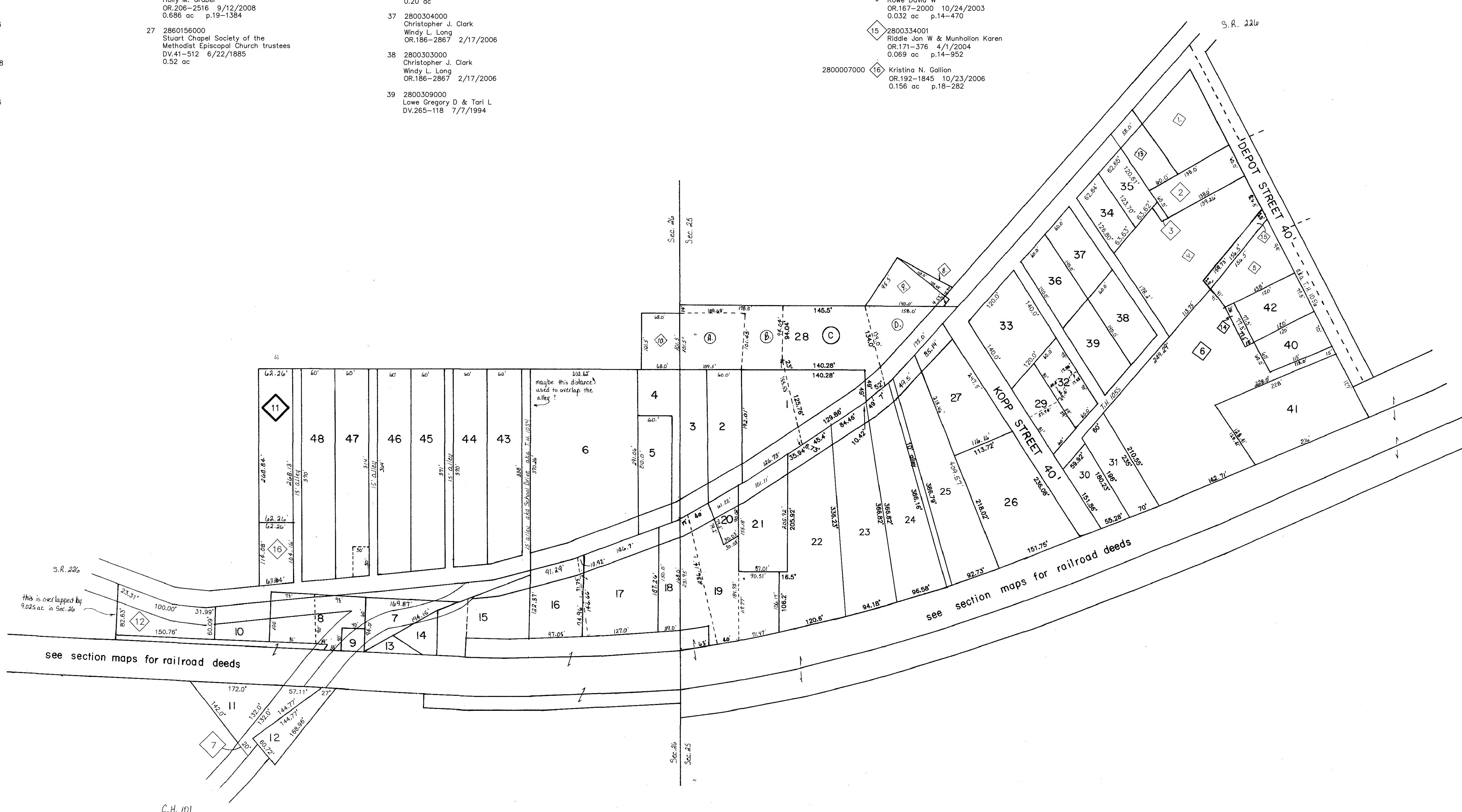
- (A) 28 2800813000  
The Board of Education West Holmes  
Local School District  
DV.234-187 2/4/1987  
0.304 ac
- (B) 28 2800339000  
Adkins Eddy S  
OR.83-624 6/13/2000  
0.222 ac p.12-425
- (C) 28 2800357000  
Gerald K. Snyder trustee  
OR.176-2493 11/29/2004  
0.457 ac p.19-251
- (D) 28 2800327000  
Miller Gloria J  
DV.279-56 7/15/1997  
0.236 ac
- 2800325000 Npt 29 Richard W. Stone, II  
OR.189-2643 6/19/2006
- Spt 29 2800325001  
Raddiff Allen D  
DV.248-843 9/28/1990  
DV.275-398 9/19/1996  
0.092 ac p.12-461
- 30 2800305000  
Wayne and Lara Erclaue  
OR.201-2824 1/2/2008  
0.213 ac p.19-1220
- 31 2800329000  
Myers Joe Stanley & Evelyn June  
DV.204-78 11/20/1978  
0.29 ac
- 2800333002 Npt 32 Richard W. Stone, II  
OR.189-2643 6/19/2006  
0.094 ac p.12-461
- Spt 32 2800333000  
Raddiff Allen D  
DV.248-843 9/28/1990  
DV.275-398 9/19/1996  
0.091 ac p.12-461
- 2800340000 33 Charles Jr. and Carol Porter  
OR.188-2537 5/1/2006  
0.37 ac p.19-703
- 34 2800346000  
Young Brent  
OR.32-543 12/18/2002  
0.173 ac p.18-474
- 35 2800345000  
Young Brent  
OR.32-543 12/18/2002  
0.169 ac p.18-474
- 36 2800341000  
Freeman Linda D & Charles G  
OR.176-2072 11/22/2004  
0.20 ac
- 37 2800340000  
Christopher J. Clark  
Wendy L. Long  
OR.186-2867 2/17/2006
- 38 2800303000  
Christopher J. Clark  
Wendy L. Long  
OR.186-2867 2/17/2006
- 39 2800309000  
Lowe Gregory D & Tori L  
DV.265-118 7/7/1994

LAKEVILLE LOTS

- 2800316000 40 Christy Schoad  
OR.189-2676 6/19/2006  
OR.189-2680 6/19/2006  
0.1725 ac p.12-425
- 2800318000 41 Christy Schoad  
OR.189-2676 6/19/2006  
OR.189-2680 6/19/2006  
0.6456 ac p.12-425
- 42 2800319000  
Rowe David W  
OR.167-2000 10/24/2003  
SFT
- 43 2800306000  
Burgett Robert A.  
Wilton Sandra Burgett;  
Taylor Linda Burgett;  
Burgett Ronnie L.  
DV.264-931 6/21/1994  
p.1-337
- 44 2800306001  
Burgett Robert A.  
Wilton Sandra Burgett;  
Taylor Linda Burgett;  
Burgett Ronnie L.  
DV.264-931 6/21/1994  
p.1-337
- 45 2800322000  
Amanda L. Belanger  
DV.199-389 8/17/2007  
p.1-337
- 46 2800323000  
Amanda L. Belanger  
DV.199-389 8/20/2007  
p.1-337
- NW 47 2800301000  
Edgell Billy Joe  
DV.268-347 4/27/1995  
OR.23-531 12/30/1998  
p.1-337
- SE 47 2800230000  
Northern Ohio Telephone Company  
DV.121-583 1/11/1949
- 48 2800302000  
Edgell Billy Joe  
DV.268-347 4/27/1995  
OR.23-531 12/30/1998  
p.1-337

SECTION PARCELS

- 1 2800330000  
Paulin Charles D  
DV.181-70 8/8/1972  
DV.230-731 4/4/1986  
0.72 ac SFT
- 2800332000 2 John W. and Doris J. Paulin  
128-67 4/6/1953  
OR.188-1457 4/24/2006  
0.2 ac
- 2800331000 3 John W. and Doris J. Paulin  
128-67 4/6/1953  
OR.188-1457 4/24/2006  
0.009 ac
- 4 2800334000  
Rush John E  
DV.253-604 11/26/1991  
DV.264-533 5/23/1994  
DV.264-770 6/8/1994  
0.512 ac
- 5 2800321000  
Riddle Jon W & Munhallon Karen  
OR.171-376 4/1/2004  
0.20 ac SFT
- 2800317000 6 Christy Schoad  
OR.189-2676 6/19/2006  
OR.189-2680 6/19/2006  
1.2396 ac p.12-425
- 2801414000 7 Richard Zickelsose  
OR.188-391 4/17/2006  
0.083 ac p.19-676
- 8 280147000  
Mackey Donald R & E Kathryn  
OR.20-858 11/23/1998  
0.02 ac p.8-48
- 9 2800328000  
Miller Gloria J  
OR.179-56 7/15/1997  
0.109 ac
- 10 2800217000  
The Board of Education West Holmes  
Local School District  
DV.234-187 2/4/1987  
0.16 ac
- 11 2800007001  
Corner Coleston  
OR.167-2649 10/30/2003  
0.384 ac p.18-282
- 2800136000 12 Richard Zickelsose  
OR.188-391 4/17/2006  
0.222 ac p.19-677
- 13 2800338000  
Taylor Kathleen  
OR.188-532 4/11/1973  
0.08 ac
- 14 2800317001  
Rowe David W  
OR.167-2000 10/24/2003  
0.032 ac p.14-470
- 15 2800334001  
Riddle Jon W & Munhallon Karen  
OR.171-376 4/1/2004  
0.069 ac p.14-952
- 2800007000 16 Kristina N. Gallon  
OR.192-1845 10/23/2006  
0.156 ac p.18-282



unincorporated  
LAKEVILLE VILLAGE  
T-20, R-15, Sec. 25 '26  
WASHINGTON TWP.

SCALE: 1" = 100'

Last Revision: 9/12/2008

W-300G

LET IT BE KNOWN, THIS MAP HAS BEEN PREPARED AS A REFERENCE GUIDE TO PROPERTY OWNERSHIP. WE BELIEVE THIS INFORMATION TO BE CORRECT AND CURRENT, HOWEVER, IT IS NOT INTENDED FOR ANY LEGAL USE, WHETHER IT BE IN SALES, TRANSFERS, TRADES, LEASES OF ANY TYPE, ETC., AND DO NOT ACCEPT RESPONSIBILITY FOR ERRORS OF ANY NATURE OR OMISSIONS CONTAINED HEREIN.