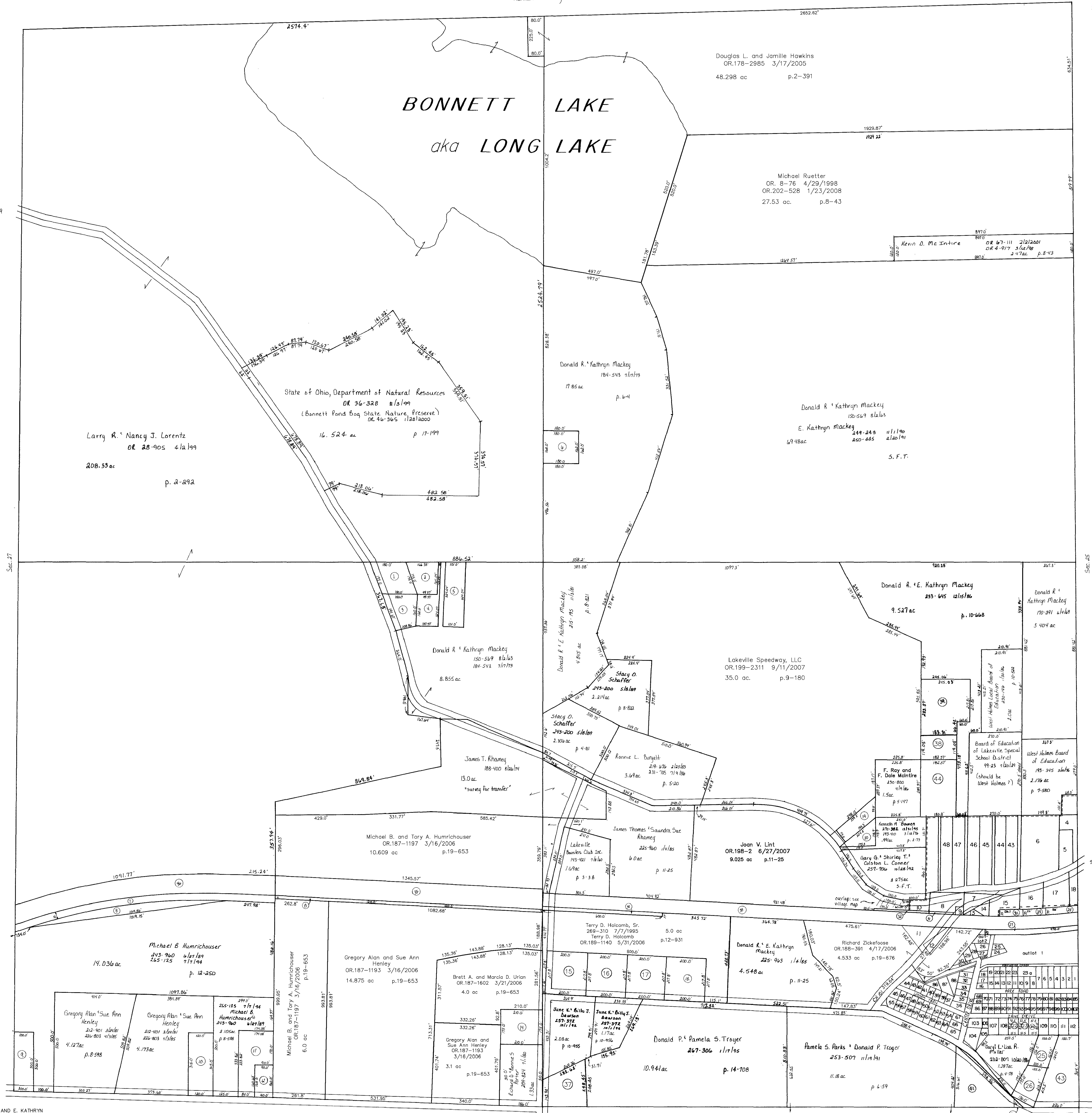


- ⑩ WASHINGTON MUTUAL INSURANCE ASSOCIATION
OR.0012-885 7/17/1998
0.026 ac p.16-796
- ⑪ MOWLEN, JEFFREY A.
OR.0162-690 8/29/2003
1.238 ac p.16-833
- ⑫ Not used
- 2800271000 ⑬ YOST, DAWN M.
ULDRICH, JAMES E.
OR.0172-1756 5/24/2004
1.49 ac p.4-78
- 2800760000 ⑭ WENGERD, JOSHUA A. AND TERESA A.
OR.0174-1 7/23/2004
1.209 ac p.4-126

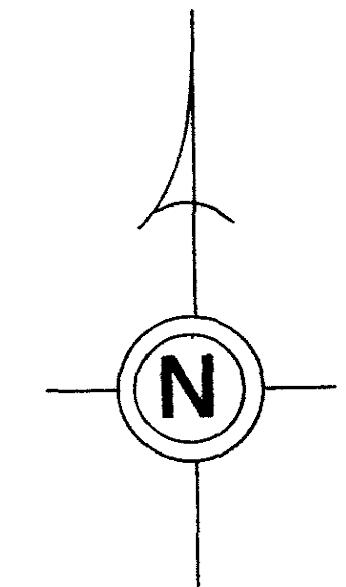
Ashland County

BONNETT LAKE
aka **LONG LAKE**



unincorporated
LAKEVILLE VILLAGE
see W-30G

LAKEVILLE PARK
see W-25A



- ① MACKAY DONALD R. AND E. KATHRYN
OR.0128-879 11/18/2002
0.68 ac p.8-56
- ② BELL MARCELLA
232-382 9/18/1986
0.5 ac p.7-91
- ③ HINTON CARLOS I. AND PHYLLIS E.
OR.0033-217 6/14/1999
0.57 ac p.5-9
- ④ BELL MARCELLA
192-547 12/8/1975
0.425 ac p.7-544
- ⑤ MACKAY DONALD R. AND E. KATHRYN
265-63 6/30/1994
0.75 ac p.8-632
- ⑥ SPARR TERRY AND BARBARA
185-620 11/26/1973
0.87 ac
- ⑦ CONSOLIDATED RAIL CORPORATION
203-456 9/29/1978
1.294 ac
- ⑧ CONSOLIDATED RAIL CORPORATION
203-456 9/29/1978
0.737 ac
- ⑨ HENLEY GREGORY ALAN AND SUE ANN
OR.0066-670 1/29/2001
0.689 ac p.17-773
- ⑩ HENLEY GREGORY ALAN AND SUE ANN
OR.0091-234 10/22/2001
0.868 ac p.8-724
- ⑪ HUMRICHOUSER HOWARD L. AND KAREN S.
202-456 8/29/1978
272-559 3/12/1996
0.995 ac p.8-232
- ⑫ HUMRICHOUSER HOWARD L. AND KAREN S.
169-219 1/27/1969
202-458 6/29/1978
272-559 3/12/1996
0.331 ac p.2-57
- ⑬ CONSOLIDATED RAIL CORPORATION
203-456 9/29/1978
0.417 ac
- ⑭ PORTER RICHARD D. AND BONNIE S.
209-824 7/1/1980
1.0 ac
- ⑮ JERRY VALENTINE
OR.123-1696 12/7/2006
1.0 ac p.3-196
- ⑯ HARRISON H. AND DEBORAH M. MURPHY
OR.192-3475 11/7/2006
1.0 ac p.4-72
- ⑰ MALOUDY LOWE
273-400 5/9/1996
OR.186-1758 2/3/2006
1.0 ac p.4-72
- ⑱ TERRY D. HOLCOMB
272-8 2/15/1996
1.0 ac p.4-72
- ⑲ MONTIRE F. RAY AND F. DALE
230-800 4/9/1986
0.39 ac
- ⑳ BOWEN KENNETH M.
193-410 3/18/1976
271-382 12/21/1995
0.286 ac p.3-30b
- ㉑ JUSTIN D. URBAN
OR.205-2045 7/8/2008
0.1 ac p.4-78
- ㉒ JUSTIN D. URBAN
OR.205-2045 7/8/2008
0.1 ac p.4-78
- ㉓ MEYERS CHERYL ANN
160-371 11/8/1966
0.1 ac p.4-78
- ㉔ YOST, DAWN M.
ULDRICH, JAMES E.
OR.0172-1756 5/24/2004
0.37 ac p.4-78
- ㉕ YOST, DAWN M.
ULDRICH, JAMES E.
OR.0172-1756 5/24/2004
0.37 ac p.4-78
- ㉖ YOST, DAWN M.
ULDRICH, JAMES E.
OR.0172-1756 5/24/2004
0.37 ac p.4-78
- ㉗ CONSOLIDATED RAIL CORPORATION
203-456 9/29/1978
0.09 ac
- ㉘ CONSOLIDATED RAIL CORPORATION
203-456 9/29/1978
0.09 ac
- ㉙ CONSOLIDATED RAIL CORPORATION
203-456 9/29/1978
0.09 ac
- ㉚ CONSOLIDATED RAIL CORPORATION
203-456 9/29/1978
0.09 ac
- ㉛ CONSOLIDATED RAIL CORPORATION
203-456 9/29/1978
0.09 ac
- ㉜ CONSOLIDATED RAIL CORPORATION
203-456 9/29/1978
0.09 ac
- ㉝ CONSOLIDATED RAIL CORPORATION
203-456 9/29/1978
0.09 ac
- ㉞ CONSOLIDATED RAIL CORPORATION
203-456 9/29/1978
0.09 ac
- ㉟ CONSOLIDATED RAIL CORPORATION
203-456 9/29/1978
0.09 ac
- ㊱ CONSOLIDATED RAIL CORPORATION
203-456 9/29/1978
0.09 ac
- ㊲ CONSOLIDATED RAIL CORPORATION
203-456 9/29/1978
0.09 ac
- ㊳ RAILROAD SEE CARD
- ㊴ RAILROAD SEE CARD
- ㊵ RAILROAD SEE CARD
- ㊶ RAILROAD SEE CARD
- ㊷ GREGORY P. GORDON
OR.200-1024 10/15/2007
0.987 ac p.14-420
- ㊸ WENGERD JOSHUA A. AND TERESA A.
OR.0174-1 7/23/2004
0.5 ac p.10-135
- ㊹ HUTCHISON MICHAEL AND NICOLE
278-767 6/26/1997
1.5 ac p.16-460

T-20, R-15, Sec.26
WASHINGTON TWP.
SCALE: 1" = 200'

Last Revision: 7/8/2008

W-25

LET IT BE KNOWN, THIS MAP HAS BEEN PREPARED AS A REFERENCE GUIDE TO PROPERTY OWNERSHIP AND CURRENT; HOWEVER, IT IS NOT INTENDED FOR ANY LEGAL USE, WHETHER IT BE IN SALES, TRANSFERS, TRADES, LEASES OF ANY TYPE, ETC., AND DO NOT ACCEPT RESPONSIBILITY FOR ERRORS OF ANY NATURE OR OMISSIONS CONTAINED HEREIN.