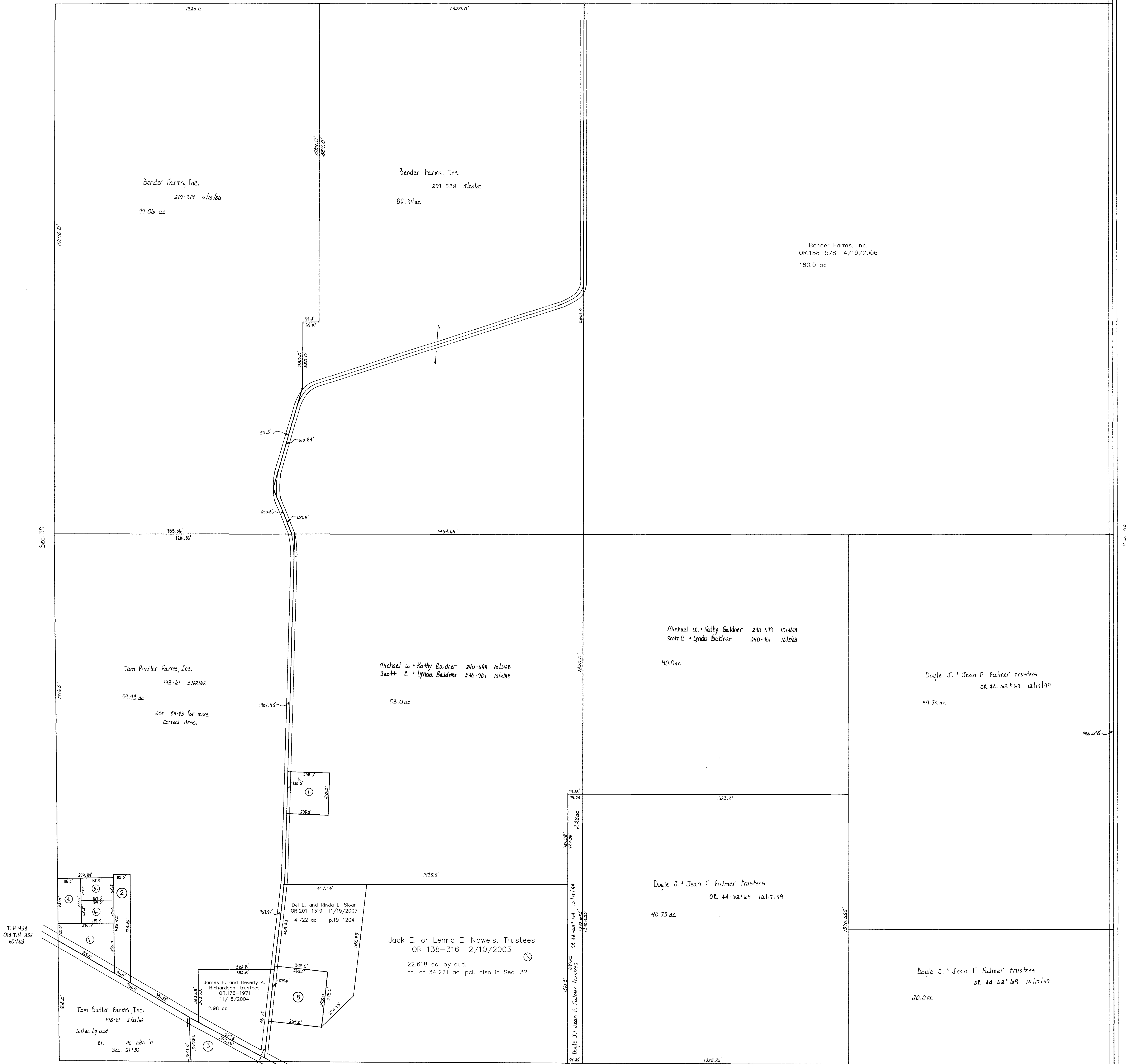


Ashland County
T.H. 459 -
Old T.H. 255
90' E/W

T.H. 460
Old T.H. 425
90' E/W



- ① BALDNER MICHAEL W. AND KATHY JO
200-850 12/23/1977
OR 0127-898 11/8/2002
OR 0127-900 11/8/2002
1.0 ac p.8-127
- ② A.R.N., LTD.
OR 0169-2505 1/29/2004
0.97 ac
- ③ Kenneth E. and Dorothy A. Stitzlein, Trustees
OR 183-1760 9/26/2005
0.758 ac p.2-405
- ④ WASHINGTON TWP. TRUSTEES
252-338 7/29/1991
0.613 ac
- ⑤ WASHINGTON TWP. TRUSTEES
252-338 7/29/1991
0.42 ac
- ⑥ WASHINGTON TWP. TRUSTEES
252-338 7/29/1991
0.42 ac
- ⑦ WASHINGTON TWP. TRUSTEES
GARAGE LOCATION
252-338 7/29/1991
1.007 ac
- ⑧ SLOAN DEL E. AND RINDA L.
OR 0152-487 6/6/2003
1.677 ac

Last Revision: 11/19/2007

T-20, R-15, Sec. 29
WASHINGTON TWP.
SCALE: 1"=200'

LET IT BE KNOWN, THIS MAP HAS BEEN PREPARED AS A REFERENCE GUIDE TO PROPERTY OWNERSHIP. WE BELIEVE THIS INFORMATION TO BE CORRECT AND CURRENT, HOWEVER, IT IS NOT INTENDED FOR ANY LEGAL USE, WHETHER IT BE IN SALES, TRANSFERS, TRADES, LEASES OF ANY TYPE, ETC., AND DO NOT ACCEPT RESPONSIBILITY FOR ERRORS OF ANY NATURE OR OMISSIONS CONTAINED HEREIN.

W-10