

LAKEVILLE LOTS

- Ept 1 2800357001 Gerald K Snyder trustee OR.176-2493 11/29/2004 0.258 ac p.19-251
Wpt 1 2800339000 Adkins Eddy S & Candice J OR.87-624 6/13/2000 p.16-109
2 2800335000 The Board of Education West Holmes Local School District DV.234-187 2/4/1987
3 2800343000 The Board of Education West Holmes Local School District DV.234-750 4/6/1987
4 2800149000 The Board of Education West Holmes Local School District DV.234-750 4/6/1987
5 2800344000 Lakeville Local Board of Education DV.123-527 3/24/1950 DV.123-528 3/24/1950
6 2800152000 Board of Education Washington Township DV.45-156 9/5/1982 1.60 ac
7 2800344000 Butcher Karen OR.144-592 4/7/2003 0.183 ac p.16-595
Ept 8 2800355000 Bing Virgil OR.176-922 11/8/2004 0.164 ac p.16-595
Wpt 8 2800342000 Wagner William DV.185-792 12/18/1973
9 2800348000 Hamlin Ronald B OR.152-143 6/9/2003 0.037 ac p.18-430
2800351000 Richard Zickfoose OR.188-391 4/17/2006
2800352000 Richard Zickfoose OR.188-391 4/17/2006 0.21 ac p.19-676
2800353000 Richard Zickfoose OR.188-391 4/17/2006 0.144 ac p.19-676
13 2800348000 Hamlin Ronald B OR.152-143 6/9/2003 0.041 ac p.18-430
14 2800348000 Hamlin Ronald B OR.152-143 6/9/2003 0.093 ac p.18-430
Ept 15 2800326000 Miller Ruth L DV.136-387 9/11/1958 DV.160-79 10/8/1956
Wpt 15 2800350000 Hamlin Ronald B OR.152-143 6/9/2003 0.064 ac p.18-430

LAKEVILLE LOTS

- NE 16 2800320000 Cary D Bradley, Jr OR.70-602 3/27/2001 OR.195-2868 3/30/2007 0.523 ac p.17-650
S&Wpt 16 2800307000 Weaver Jason L & Candice J OR.87-231 9/12/2001 p.16-109
NE 17 2800320000 Cary D Bradley, Jr OR.70-602 3/27/2001 OR.195-2868 3/30/2007 0.523 ac p.17-650
SW 17 2800308000 Weaver Jason L & Candice J OR.87-231 9/12/2001 p.16-109
18 2800311000 Reed Donald E & Barbara A DV.270-263 9/4/1995
Ept 19 2800788000 Smith Bruce W OR.54-907 7/7/2000 0.183 ac p.9-190
MID 19 2800767000 Smith Bruce W OR.54-907 7/7/2000 0.305 ac p.9-190
Wpt 19 2800787001 Reed Donald E & Barbara A DV.277-617 4/1/1997 0.212 ac p.16-576
20 2800313000 Smith Bruce W OR.54-907 7/7/2000 0.082 ac p.9-190
21 2800344000 Smith Bruce W OR.54-907 7/7/2000 0.362 ac p.9-190
22 2800336000 Sponseller James R trustee & Sponseller Norma J trustee OR.176-2434 11/29/2004 0.59 ac SFT
23 2800337000 Sponseller James R trustee & Sponseller Norma J trustee OR.176-2434 11/29/2004 0.75 ac SFT
24 2800356000 Gerald K Snyder trustee OR.176-2493 11/29/2004 0.589 ac p.19-251
25 2800324000 Rebecca Jeanne Hall OR.198-1549 7/20/2007 0.62 ac p.18-445
26 2800310000 Louis G. and Marie V. Blecha, trustees OR.179-3267 5/5/1950 0.57 ac
27 2860156000 Stuart Chapel Society of the Methodist Episcopal Church trustees DV.41-512 6/22/1955 0.52 ac

LAKEVILLE LOTS

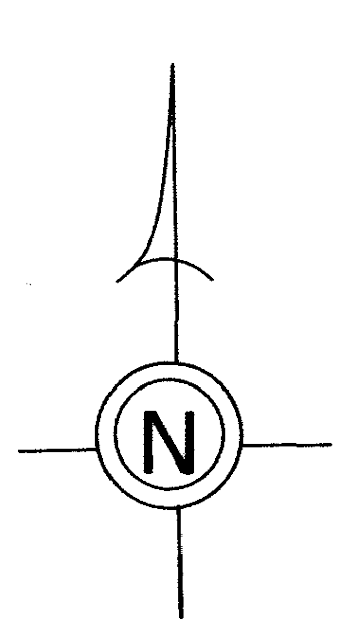
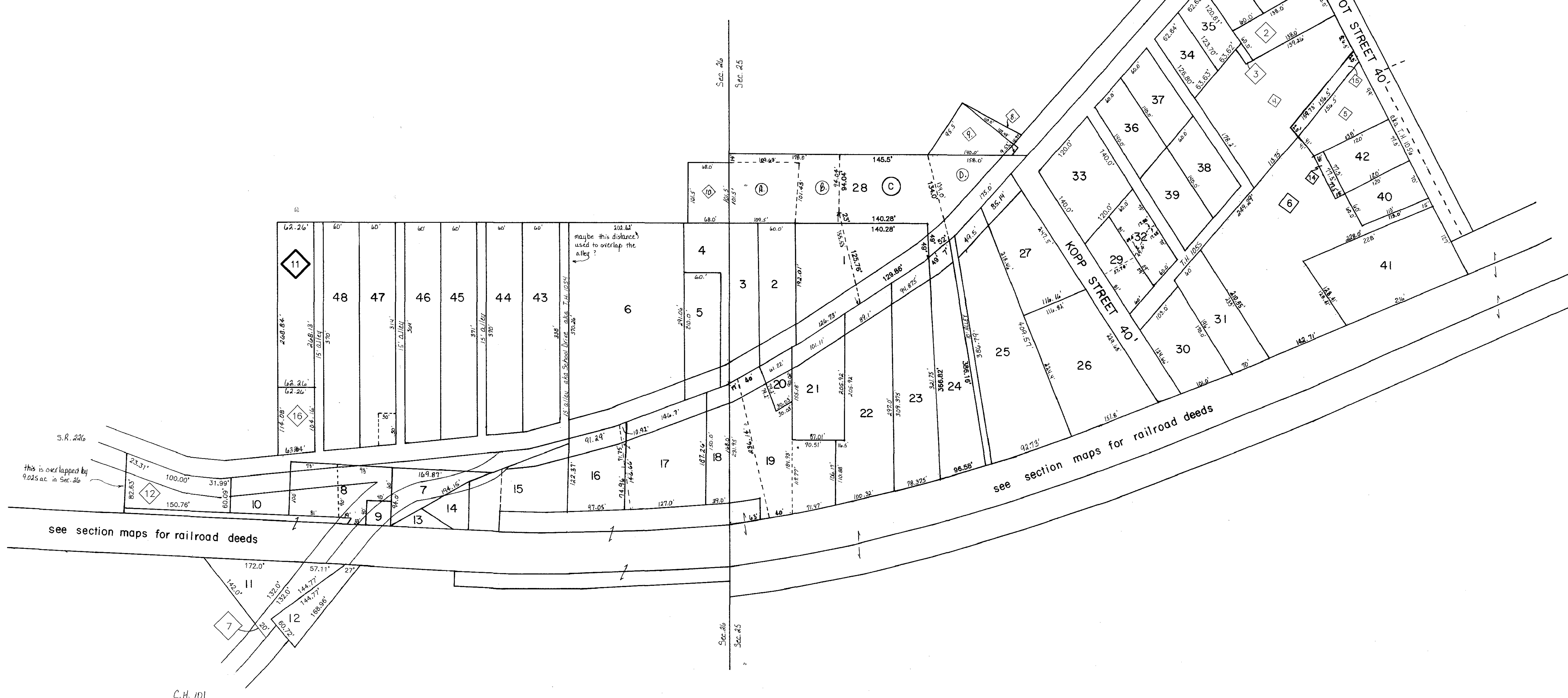
- A 28 2800813000 The Board of Education West Holmes Local School District DV.234-187 2/4/1987 0.304 ac
B 28 2800339000 Adkins Eddy S OR.87-624 6/13/2000 0.222 ac p.12-425
C 28 2800357000 Gerald K Snyder trustee OR.176-2493 11/29/2004 0.457 ac p.19-251
D 28 2800327000 Miller Gloria J DV.279-56 7/15/1997 0.236 ac
2800325000 Npt 29 Richard W. Stone, II OR.189-2643 6/19/2006
Spt 29 2800325001 Raddiff Allen D DV.248-843 9/28/1990 DV.275-398 9/19/1996 0.092 ac p.12-461
30 2800350000 Robert Donald Blaisdell OR.173-2361 7/9/2004 0.40 ac
31 2800329000 Myers Joe Stanley & Evelyn June DV.204-78 11/20/1978 0.29 ac
2800333002 Npt 32 Richard W. Stone, II OR.189-2643 6/19/2006 0.094 ac p.12-461
Spt 32 2800333000 Raddiff Allen D DV.248-843 9/28/1990 DV.275-398 9/19/1996 0.091 ac p.12-461
2800340000 33 Charles Jr. and Carol Porter OR.188-2537 5/1/2006 0.37 ac p.19-703
34 2800346000 Young Brent OR.132-543 12/18/2002 0.173 ac p.18-474
35 2800345000 Young Brent OR.132-543 12/18/2002 0.169 ac p.18-474
36 2800341000 Freeman Linda D & Charles G OR.176-2072 11/22/2004 0.20 ac
37 2800340000 Christopher J. Clark Wendy L Long OR.186-2867 2/17/2006
38 2800330000 Christopher J. Clark Wendy L Long OR.186-2867 2/17/2006
39 2800309000 Lowe Gregory D & Tori L DV.265-118 7/7/1994

LAKEVILLE LOTS

- 2800316000 40 Christy Schoad OR.189-2676 6/19/2006 OR.189-2680 6/19/2006 0.1725 ac p.12-425
2800318000 41 Christy Schoad OR.189-2676 6/19/2006 OR.189-2680 6/19/2006 0.6456 ac p.12-425
42 2800319000 Rowe David W OR.167-2000 10/24/2003 SFT
43 2800306000 Burgett Robert A; Wipson Sandra Burgett; Taylor Linda Burgett; Burgett Ronnie L DV.264-931 6/21/1994 p.1-337
44 2800306001 Burgett Robert A; Wipson Sandra Burgett; Taylor Linda Burgett; Burgett Ronnie L DV.264-931 6/21/1994 p.1-337
45 2800322000 Amanda L Belanger DV.199-389 8/17/2007 p.1-337
46 2800323000 Amanda L Belanger DV.199-389 8/20/2007 p.1-337
NW 47 2800301000 Edgell Billy Joe DV.268-347 4/27/1995 OR.23-531 12/30/1998 p.1-337
SE 47 2800023000 Northern Ohio Telephone Company DV.121-583 1/11/1949
48 2800302000 Edgell Billy Joe DV.268-347 4/27/1995 OR.23-531 12/30/1998 p.1-337

SECTION PARCELS

- 1 2800330000 Paulin Charles D DV.181-70 8/8/1972 DV.230-731 4/4/1986 0.72 ac SFT
2800332000 2 John W. and Doris J. Paulin 128-67 4/6/1953 OR.188-1457 4/24/2006 0.2 ac
2800331000 3 John W. and Doris J. Paulin 128-67 4/6/1953 OR.188-1457 4/24/2006 0.009 ac
4 2800334000 Rush John E DV.263-604 11/26/1991 DV.264-533 5/23/1994 DV.264-770 6/8/1994 0.512 ac
5 2800321000 Riddle Jon W & Munhallon Karen OR.171-376 4/1/2004 0.20 ac SFT
2800317000 6 Christy Schoad OR.189-2676 6/19/2006 OR.189-2680 6/19/2006 1.2396 ac p.12-425
2801414000 7 Richard Zickfoose OR.188-391 4/17/2006 0.083 ac p.19-676
8 2860147000 Mackey Donald R & E Kathryn OR.20-858 11/23/1998 0.02 ac p.8-488
9 2800328000 Miller Gloria J DV.279-56 7/15/1997 0.109 ac
10 2800217000 The Board of Education West Holmes Local School District DV.234-187 2/4/1987 0.16 ac
11 2800007001 Corner Coleston OR.167-2649 10/30/2003 0.384 ac p.18-282
2800136000 12 Richard Zickfoose OR.188-391 4/17/2006 0.222 ac p.19-677
13 2800338000 Taylor Kathleen DV.183-532 4/11/1973 0.08 ac
14 2800317001 Rowe David W OR.167-2000 10/24/2003 0.032 ac p.14-470
15 2800334001 Riddle Jon W & Munhallon Karen OR.171-376 4/1/2004 0.069 ac p.14-952
2800007000 16 Kristina N. Gallion OR.192-1845 10/23/2006 0.156 ac p.18-282



unincorporated  
LAKEVILLE VILLAGE  
T-20, R-15, Sec. 25 '26  
WASHINGTON TWP.  
SCALE: 1" = 100'

LET IT BE KNOWN, THIS MAP HAS BEEN PREPARED AS A REFERENCE GUIDE TO PROPERTY OWNERSHIP. WE BELIEVE THIS INFORMATION TO BE CORRECT AND CURRENT, HOWEVER, IT IS NOT INTENDED FOR ANY LEGAL USE, WHETHER IT BE IN SALES, TRANSFERS, TRADES, LEASES OF ANY TYPE, ETC., AND DO NOT ACCEPT RESPONSIBILITY FOR ERRORS OF ANY NATURE OR OMISSIONS CONTAINED HEREIN.

W-300G

Last Revision: 8/20/2007