

- 1 REUTER FRED C. AND ROSEMARY
244-576 8/31/1989
1.0 ac p.12-256
- 2 REUTER FRED C. AND ROSEMARY
244-576 8/31/1989
1.025 ac p.8-773
- 3 LONG JEFFREY L. AND JACQUELINE A.
OR.0055-526 7/20/2000
1.0 ac
- 4 David R. Cogor
OR.201-2275 12/21/2007
0.256 ac

- 5 David R. Cogor
OR.201-2275 12/21/2007
0.185 ac
- 6 CONSOLIDATED RAIL CORPORATION
203-456 9/29/1978
0.541 ac
- 7 CONSOLIDATED RAIL CORPORATION
203-456 9/29/1978
0.855 ac
- 8 RAILROAD SEE CARD

- 9 CONSOLIDATED RAIL CORPORATION
203-456 9/29/1978
0.631 ac
- 10 CONSOLIDATED RAIL CORPORATION
203-456 9/29/1978
1.138 ac
- 11 RAILROAD SEE CARD
- 12 CONSOLIDATED RAIL CORPORATION
203-456 9/29/1978
0.269 ac
- 13 CONSOLIDATED RAIL CORPORATION
203-456 9/29/1978
0.132 ac

- 14 CONSOLIDATED RAIL CORPORATION
203-456 9/29/1978
0.49 ac
- 15 CONSOLIDATED RAIL CORPORATION
203-456 9/29/1978
0.32 ac
- 16 CONSOLIDATED RAIL CORPORATION
203-456 9/29/1978
0.987 ac
- 17 CONSOLIDATED RAIL CORPORATION
203-456 9/29/1978
0.387 ac
- 18 CONSOLIDATED RAIL CORPORATION
203-456 9/29/1978
0.114 ac

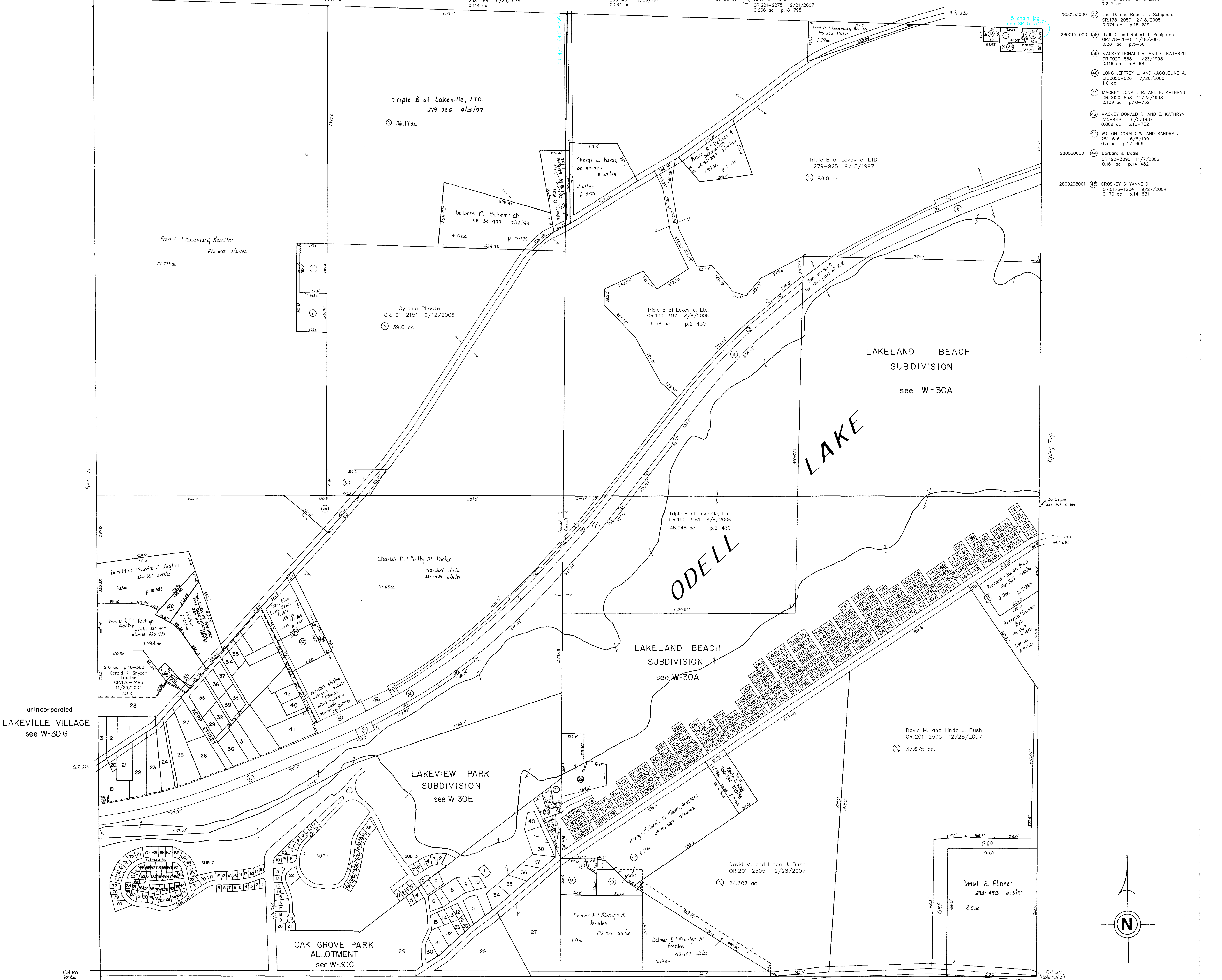
- 19 CONSOLIDATED RAIL CORPORATION
203-456 9/29/1978
0.202 ac
- 20 CONSOLIDATED RAIL CORPORATION
203-456 9/29/1978
0.11 ac
- 21 CONSOLIDATED RAIL CORPORATION
203-456 9/29/1978
1.881 ac
- 22 RAILROAD SEE CARD
- 23 CONSOLIDATED RAIL CORPORATION
203-456 9/29/1978
0.064 ac

- 24 CONSOLIDATED RAIL CORPORATION
203-456 9/29/1978
0.222 ac
- 25 CONSOLIDATED RAIL CORPORATION
203-456 9/29/1978
0.41 ac
- 26 CONSOLIDATED RAIL CORPORATION
203-456 9/29/1978
0.04 ac
- 27 RAILROAD SEE CARD

- 28 David R. Cogor
OR.201-2275 12/21/2007
0.266 ac p.18-795

- 29 Debra D. Zemis; trustee
OR.197-3314 6/25/2007
1.484 ac p.12-516
- 30 Barbara J. Boals
OR.192-3090 11/7/2006
0.843 ac p.4-31
- 31 HUTCHISON ROGER D.
186-601 3/19/1974
0.079 ac
- 32 HUTCHISON ROGER D.
186-601 3/19/1974
0.631 ac

- 33 PEEBLES DELMAR E. AND MARILYN M.
148-107 6/2/1962
0.65 ac SF1
- 34 Debra D. Zemis; trustee
OR.197-3314 6/25/2007
0.213 ac p.12-516
- 35 MOSER IVAN D. AND VIVIAN J.
206-485 7/12/1979
0.181 ac p.5-64
- 36 Judi D. and Robert T. Schippers
OR.178-2080 2/18/2005
0.242 ac
- 37 Judi D. and Robert T. Schippers
OR.178-2080 2/18/2005
0.074 ac p.16-819
- 38 Judi D. and Robert T. Schippers
OR.178-2080 2/18/2005
0.281 ac p.5-36
- 39 MACKAY DONALD R. AND E. KATHRYN
OR.0020-858 11/23/1998
0.116 ac p.8-68
- 40 LONG JEFFREY L. AND JACQUELINE A.
OR.0055-526 7/20/2000
1.0 ac
- 41 MACKAY DONALD R. AND E. KATHRYN
OR.0020-858 11/23/1998
0.109 ac p.10-752
- 42 MACKAY DONALD R. AND E. KATHRYN
235-449 6/5/1987
0.009 ac p.10-752
- 43 WIGTON DONALD W. AND SANDRA J.
251-616 6/6/1991
0.5 ac p.12-669
- 44 Barbara J. Boals
OR.192-3090 11/7/2006
0.161 ac p.14-482
- 45 CROSKY SHYANNE D.
OR.0175-1204 9/27/2004
0.179 ac p.14-631



T-20, R-15, Sec. 25
WASHINGTON TWP.
SCALE: 1" = 200'

Last Revision: 12/28/2007

LET IT BE KNOWN, THIS MAP HAS BEEN PREPARED AS A REFERENCE GUIDE TO PROPERTY OWNERSHIP. WE BELIEVE THIS INFORMATION TO BE CORRECT AND CURRENT, HOWEVER, IT IS NOT INTENDED FOR ANY LEGAL USE, WHETHER IT BE IN SALES, TRANSFERS, TRUSTS, LEASES OF ANY TYPE, ETC., AND DO NOT ACCEPT RESPONSIBILITY FOR ERRORS OF ANY NATURE OR OMISSIONS CONTAINED HEREIN.

W-30