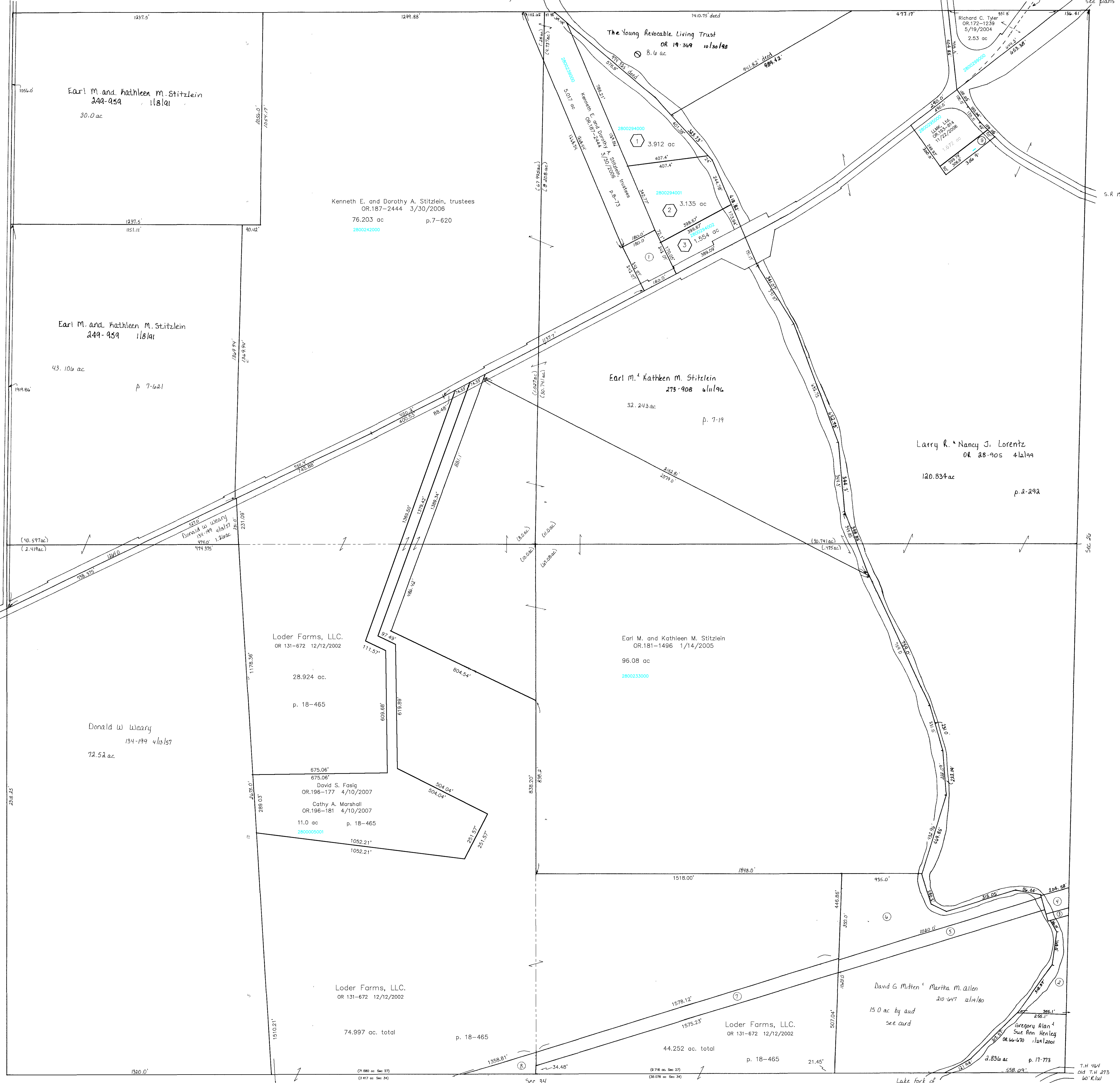


T.H. 461  
Old T.H. 382  
30' R.L.W.

Ashland County  
Lake Fork of  
Mohican River

S.R. 179  
Old S.R. 3  
S.R. 5  
Etlu varies  
see plans



- ① PAVLISIN DAVID AND JULIE  
244-604 9/5/1989  
1.0 ac p. 7-622
- ② HUMPHRHOUSER MICHAEL B.  
243-960 6/27/1989  
265-125 7/7/1994  
1.3 ac p. 12-350
- ③ CONSOLIDATED RAIL CORPORATION  
203-456 9/29/1978  
PT 1.294 ac
- ④ RAILROAD SEE CARD
- ⑤ RAILROAD SEE CARD
- ⑥ CONSOLIDATED RAIL CORPORATION  
203-456 9/29/1978  
3.75 ac
- ⑦ RAILROAD SEE CARD
- ⑧ RAILROAD SEE CARD
- ⑨ LORNTZ LARRY C. AND NANCY J.  
OR 0168-1204 11/21/2003  
0.346 ac p. 18-609
- ⑩ Loder Farms, LLC  
Plat 2-378 Platted 5/26/2004
- 2800294000 ① YOUNG NANCY F.  
270-537 10/11/1995  
OR 0175-2803 10/21/2004  
3.912 ac
- 2800294001 ② YOUNG NANCY F.  
270-537 10/11/1995  
OR 0175-2803 10/21/2004  
3.135 ac
- 2800294002 ③ YOUNG NANCY F.  
270-537 10/11/1995  
OR 0175-2803 10/21/2004  
1.554 ac

T-20, R-15, Sec. 27  
WASHINGTON TWP.

SCALE : 1" = 200'  
Last Revision: 4/10/2007

LET IT BE KNOWN, THIS MAP HAS BEEN PREPARED AS A REFERENCE GUIDE TO PROPERTY OWNERSHIP. WE BELIEVE THIS INFORMATION TO BE CORRECT AND CURRENT, HOWEVER, IT IS NOT INTENDED FOR ANY LEGAL USE, WHETHER IT BE IN SALES, TRANSFERS, TRADES, LEASES OF ANY TYPE, ETC. AND DO NOT ACCEPT RESPONSIBILITY FOR ERRORS OF ANY NATURE OR OMISSIONS CONTAINED HEREIN.

W-20