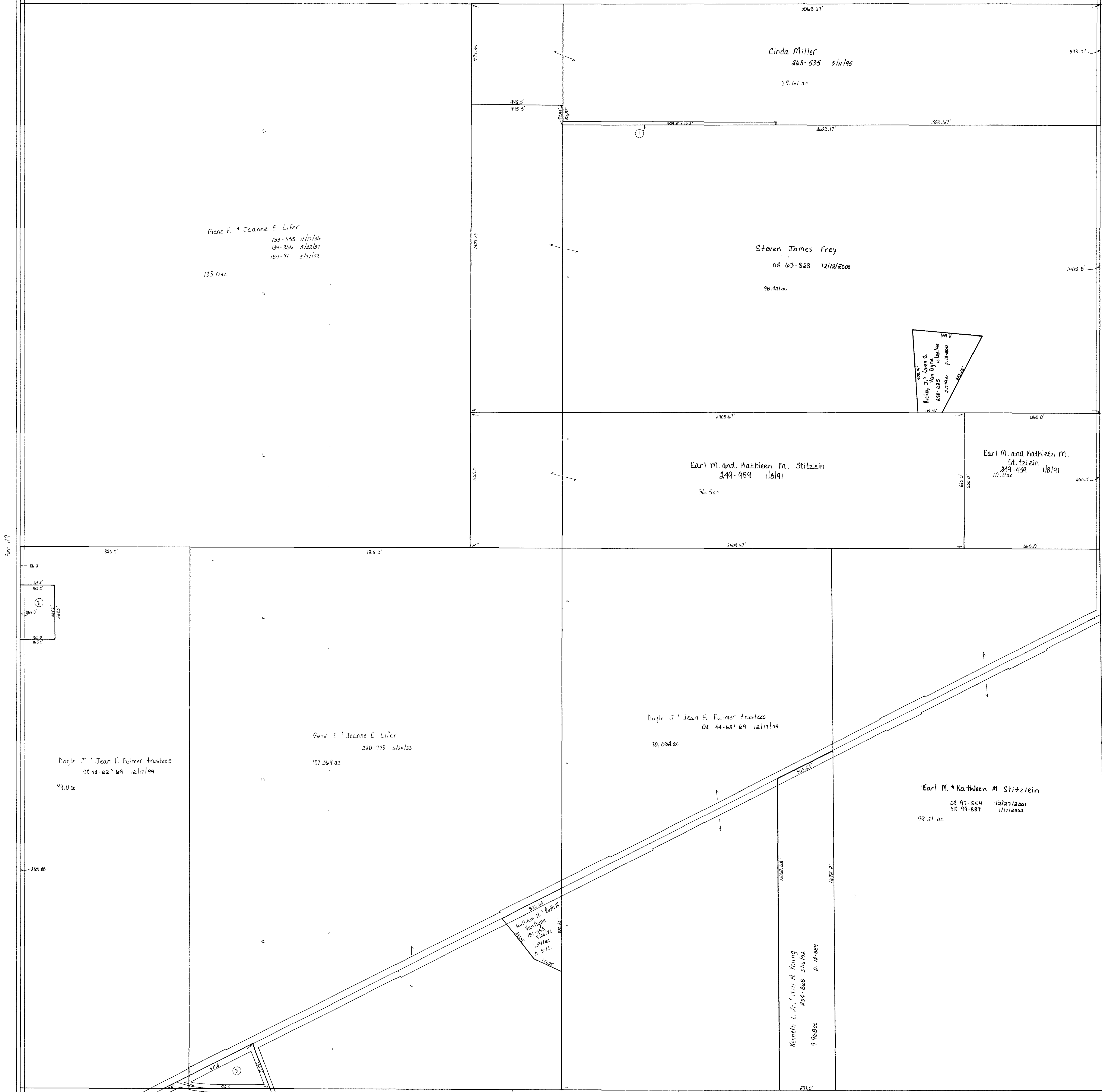


T.H. 460
Old T.H. 495
40' E/W

T.H. 461
Old T.H. 552
30' E/W

Behland County



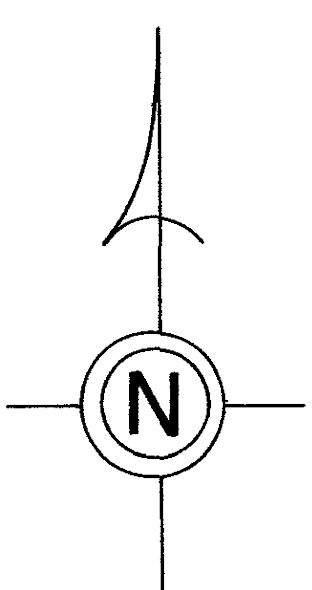
T.H. 460
Old T.H. 425
90' E/W

S.E. 5
R/W varies
see plans

C.H. 232
R/W Linkman
C.H. 32
40' E/W

Sec. 28

S. R. 3
E/W varies
see plans



- ① FREY STEVEN JAMES
OR.0063-868 12/12/2000
0.39 ac S.F.T.
- ② FULMER JEAN F. TRUSTEE
FULMER, DOYLE, J. TRUSTEE
OR.0044-62 12/17/1999
OR.0044-69 12/17/1999
1.0 ac
- ③ LOUDONVILLE BAPTIST TEMPLE
OR.0144-277 3/31/2003
1.09 ac Plot IN FILE

T-20, R-15, Sec.28
WASHINGTON TWP.
SCALE: 1"=200'

Last Revision: 1/1/2005

LET IT BE KNOWN, THIS MAP HAS BEEN PREPARED AS A REFERENCE GUIDE TO PROPERTY OWNERSHIP. WE BELIEVE THIS INFORMATION TO BE CORRECT AND CURRENT, HOWEVER, IT IS NOT INTENDED FOR ANY LEGAL USE, WHETHER IT BE IN SALES, TRANSFERS, TRADES, LEASES OF ANY TYPE, ETC., AND DO NOT ACCEPT RESPONSIBILITY FOR ERRORS OF ANY NATURE OR OMISSIONS CONTAINED HEREIN.

W-15