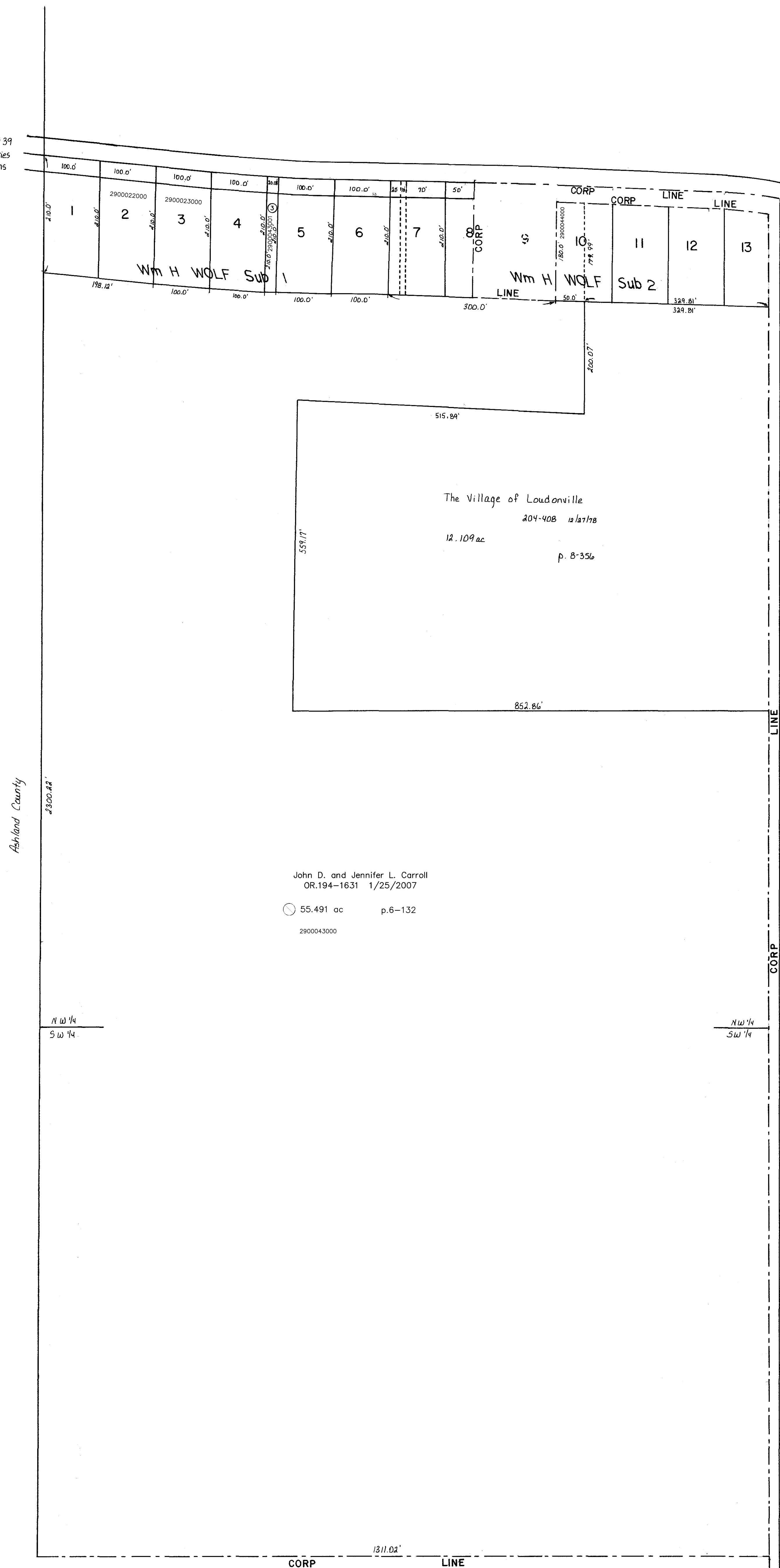


S.R. 60<sup>th</sup> 39  
R/W varies  
see plans

S.R. 60<sup>th</sup> 39  
R/W varies  
see plans



John D. and Jennifer L. Carroll  
OR.194-1631 1/25/2007  
55.491 ac p. 6-132  
2900043000

**Wm H Wolf Subdivision 1**  
**SR 5-386**

- 1 2900013000  
Cronbach, Brad A & Angela D  
DV.272-704 3/22/1996  
0.483 ac
- 2 2900022000  
Kenneth W. and Joann M. Utterback  
158-177 4/1/1988  
OR.187-219 3/13/2006  
0.482 ac
- 3 2900023000  
Kenneth W. and Joann M. Utterback  
199-518 9/9/1977  
OR.187-219 3/13/2006  
0.483 ac
- 4 2900028000  
Young Robert A and Cheryl A  
DV.260-1009 8/6/1993  
0.483 ac
- 5 2900090000  
Young Scott R & Cynthia A  
OR.62-202 11/9/2000  
0.483 ac
- 6 2900019000  
Young Alice L  
DV.218-39 8/30/1982  
OR.117-673 7/16/2002  
0.483 ac

**Wm H Wolf Subdivision 2**  
**P. 2-17 & 2-18**

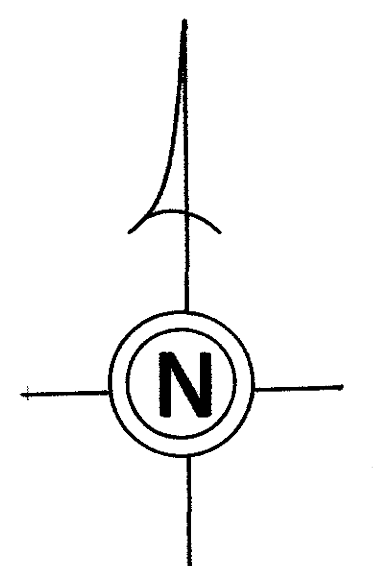
- MD 7 2900020001  
Young Alice L  
DV.218-39 8/30/1982  
OR.117-673 7/16/2002
- Wpt 7 2900020000  
Young Alice L  
DV.218-39 8/30/1982  
OR.117-673 7/16/2002
- Ept 7 2900010000  
McKinley Mary Ellen  
DV.203-532 10/5/1978  
DV.248-894 10/5/1990
- Wpt 8 2900011000  
McKinley Mary Ellen  
DV.203-532 10/5/1978  
DV.248-894 10/5/1990
- W 1/2 10 2900044000  
John D. and Jennifer L. Carroll  
OR.194-1631 1/25/2007  
0.206 ac
- 10 2960001000  
The Village of Loudonville  
DV.204-408 12/27/1978  
0.207 ac
- 11 2960002000  
The Village of Loudonville  
DV.204-408 12/27/1978  
0.413 ac
- 12 2960003000  
The Village of Loudonville  
DV.204-408 12/27/1978  
0.413 ac p. 8-356
- 13 2960004000  
The Village of Loudonville  
DV.204-408 12/27/1978  
0.318 ac p. 8-356

**Circled Numbered Parcels**

- 3 2900043001  
John D. and Jennifer L. Carroll  
194-1631 1/25/2007  
0.096 ac S.F.T.

Last Revision: 1/25/2007

LET IT BE KNOWN, THIS MAP HAS BEEN PREPARED  
AS A REFERENCE GUIDE TO PROPERTY OWNERSHIP.  
WE BELIEVE THIS INFORMATION TO BE CORRECT  
AND CURRENT, HOWEVER, IT IS NOT INTENDED  
FOR ANY LEGAL USE, WHETHER IT BE IN SALES,  
TRANSFERS, TRADES, LEASES OF ANY TYPE, ETC.,  
AND DO NOT ACCEPT RESPONSIBILITY FOR ERRORS  
OF ANY NATURE OR OMISSIONS CONTAINED HEREIN.



incorporated  
**LOUDONVILLE VILLAGE**

T-19, R-15, Sec. 6  
**WASHINGTON TWP.**

SCALE: 1" = 100'

**W-313**

T.H. 455  
Old T.H. 259  
40' R/W