

- 1 REUTER FRED C. AND ROSEMARY 244-576 8/31/1989 1.0 ac p.12-256
- 2 REUTER FRED C. AND ROSEMARY 244-576 8/31/1989 1.025 ac p.8-773
- 3 LONG JEFFREY L. AND JACQUELINE A. 96.0055-926 7/20/2000 1.0 ac
- 4 Terry A. Sears OR.189-3457 6/28/2006 0.256 ac
- 5 Terry A. Sears OR.189-3457 6/28/2006 0.185 ac
- 6 CONSOLIDATED RAIL CORPORATION 203-456 9/29/1978 0.631 ac
- 7 CONSOLIDATED RAIL CORPORATION 203-456 9/29/1978 1.138 ac
- 8 CONSOLIDATED RAIL CORPORATION 203-456 9/29/1978 0.541 ac
- 9 RAILROAD SEE CARD
- 10 CONSOLIDATED RAIL CORPORATION 203-456 9/29/1978 0.269 ac
- 11 CONSOLIDATED RAIL CORPORATION 203-456 9/29/1978 0.855 ac
- 12 RAILROAD SEE CARD
- 13 CONSOLIDATED RAIL CORPORATION 203-456 9/29/1978 0.132 ac
- 14 CONSOLIDATED RAIL CORPORATION 203-456 9/29/1978 0.631 ac
- 15 CONSOLIDATED RAIL CORPORATION 203-456 9/29/1978 0.49 ac
- 16 CONSOLIDATED RAIL CORPORATION 203-456 9/29/1978 0.202 ac
- 17 CONSOLIDATED RAIL CORPORATION 203-456 9/29/1978 0.32 ac
- 18 CONSOLIDATED RAIL CORPORATION 203-456 9/29/1978 0.11 ac
- 19 CONSOLIDATED RAIL CORPORATION 203-456 9/29/1978 1.881 ac
- 20 RAILROAD SEE CARD
- 21 CONSOLIDATED RAIL CORPORATION 203-456 9/29/1978 0.064 ac
- 22 CONSOLIDATED RAIL CORPORATION 203-456 9/29/1978 0.222 ac
- 23 CONSOLIDATED RAIL CORPORATION 203-456 9/29/1978 0.41 ac
- 24 CONSOLIDATED RAIL CORPORATION 203-456 9/29/1978 0.04 ac
- 25 RAILROAD SEE CARD
- 26 Terry A. Sears OR.189-3457 6/28/2006 0.266 ac p.18-795
- 27 ELLIS DONALD D. AND MARY L., TRUSTEES 279-827 9/5/1997 1.484 ac p.12-516
- 28 Barbara J. Boals OR.192-3090 11/7/2006 0.843 ac p.4-31
- 29 HUTCHISON ROGER D. 186-601 3/19/1974 0.079 ac
- 30 HUTCHISON ROGER D. 186-601 3/19/1974 0.831 ac
- 31 PEEBLES DELMAR E. AND MARILYN M. 148-107 6/2/1962 0.65 ac SFT
- 32 ELLIS DONALD D. AND MARY L., TRUSTEES 279-827 9/5/1997 0.213 ac p.12-516
- 33 MOSER IVAN D. AND VIVIAN J. 206-485 7/12/1979 0.181 ac p.5-64
- 34 Judi D. and Robert T. Schippers OR.178-2080 2/18/2005 0.242 ac
- 35 Judi D. and Robert T. Schippers OR.178-2080 2/18/2005 0.074 ac p.16-819
- 36 Judi D. and Robert T. Schippers OR.178-2080 2/18/2005 0.281 ac p.3-36
- 37 MACKAY DONALD R. AND E. KATHRYN OR.0020-858 11/23/1998 0.116 ac p.8-68
- 38 LONG JEFFREY L. AND JACQUELINE A. OR.0055-926 7/20/2000 1.0 ac
- 39 MACKAY DONALD R. AND E. KATHRYN OR.0020-858 11/23/1998 0.109 ac p.10-752
- 40 MACKAY DONALD R. AND E. KATHRYN 235-449 6/5/1987 0.009 ac p.10-752
- 41 WIGTON DONALD W. AND SANDRA J. 251-616 6/6/1991 0.5 ac p.12-669
- 42 Barbara J. Boals OR.192-3090 11/7/2006 0.161 ac p.14-482
- 43 CROSKY SHYANNE D. OR.0175-1204 9/27/2004 0.179 ac p.14-631

2800298000

2800016000

280008003

2800069000

2800153000

2800154000

2800154000

2800154000

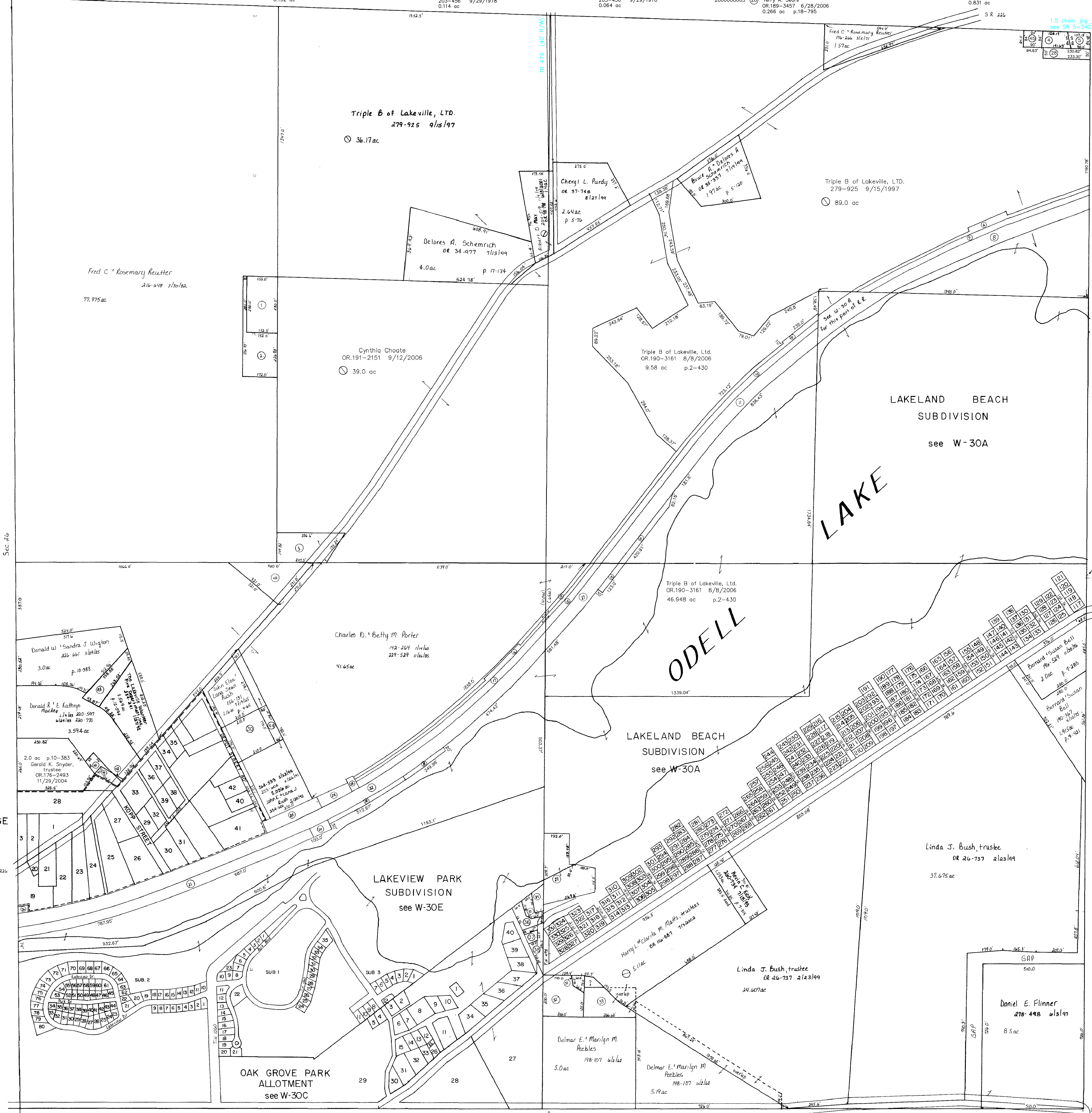
2800154000

2800154000

2800154000

2800260001

2800298001



unincorporated
LAKEVILLE VILLAGE
see W-30G

T-20, R-15, Sec. 25
WASHINGTON TWP.
SCALE: 1" = 200'

Last Revision: 11/7/2006

LET IT BE KNOWN, THIS MAP HAS BEEN PREPARED AS A REFERENCE GUIDE TO PROPERTY OWNERSHIP. WE BELIEVE THIS INFORMATION TO BE CORRECT AND CURRENT, HOWEVER, IT IS NOT INTENDED FOR ANY LEGAL USE, WHETHER IT BE IN SALES, TRANSFERS, TRUSTS, LEASES OF ANY TYPE, ETC., AND DO NOT ACCEPT RESPONSIBILITY FOR ERRORS OF ANY NATURE OR OMISSIONS CONTAINED HEREIN.

W-30