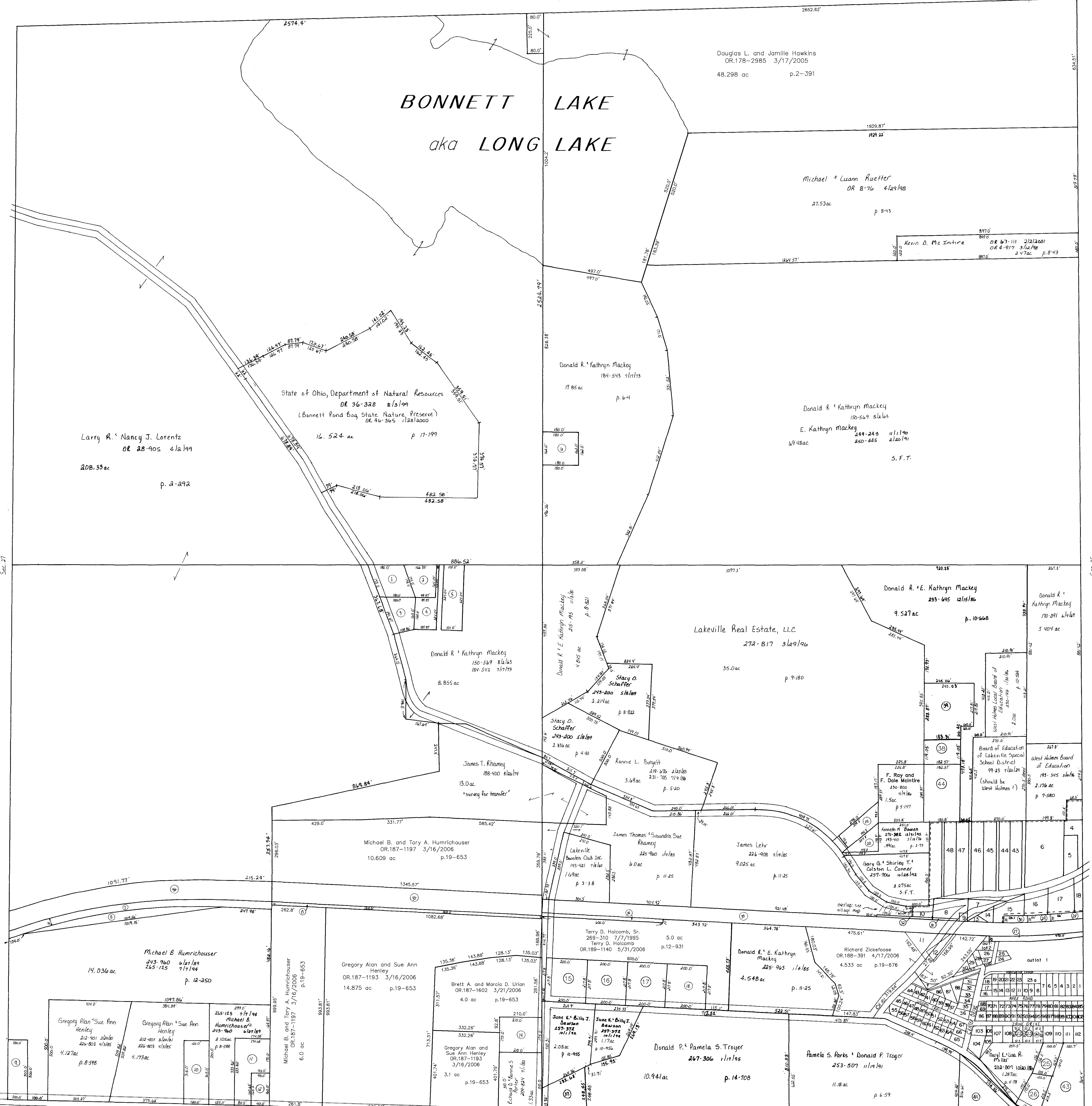


- (40) WASHINGTON MUTUAL INSURANCE ASSOCIATION
OR.0012-885 7/17/1998
0.026 ac p.16-796
- (41) McMILLEN JEFFREY A.
OR.0162-690 8/29/2003
1.238 ac p.16-823
- (42) Not used

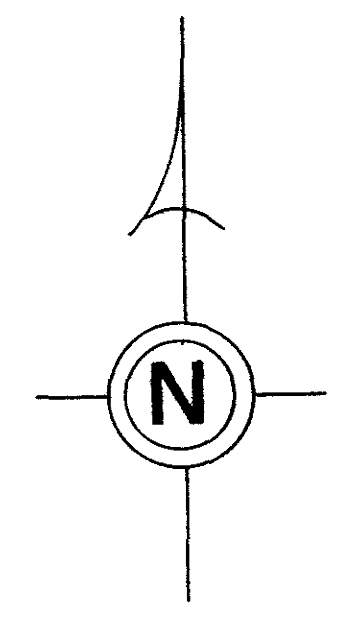
- 2800271000 (43) YOST, DAMN M.
ULDRICH, JAMES E.
OR.0172-1756 5/24/2004
1.49 ac p.4-78
- 2800760000 (44) WENGERD JOSHUA A. AND TERESA A.
OR.0174-1 7/23/2004
1.209 ac p.4-126

Ashland County



unincorporated
LAKEVILLE VILLAGE
see W-30G

LAKEVILLE PARK
see W-25A



- (1) MACKY DONALD R. AND E. KATHRYN
OR.0228-879 11/18/2002
0.68 ac p.8-58
- (2) BELL MARCELLA
232-382 9/18/1986
0.5 ac p.7-91
- (3) HINTON CARLOS L. AND PHYLLIS E.
OR.0033-217 6/14/1999
0.57 ac p.5-9
- (4) BELL MARCELLA
192-547 12/8/1975
0.422 ac p.7-544
- (5) MACKY DONALD R. AND E. KATHRYN
265-63 6/30/1994
0.75 ac p.8-632
- (6) SPARR TERRY AND BARBARA
185-620 11/26/1973
0.67 ac
- (7) CONSOLIDATED RAIL CORPORATION
203-456 9/29/1978
1.294 ac
- (8) CONSOLIDATED RAIL CORPORATION
203-456 9/29/1978
0.737 ac
- (9) HENLEY GREGORY ALAN AND SUE ANN
OR.0066-870 1/29/2001
0.689 ac p.17-773
- (10) HENLEY GREGORY ALAN AND SUE ANN
OR.0091-234 10/22/2001
0.868 ac p.8-724
- (11) HUMRICHOUSER HOWARD L. AND KAREN S.
202-456 6/29/1978
272-559 3/12/1996
0.995 ac p.8-232
- (12) HUMRICHOUSER HOWARD L. AND KAREN S.
168-219 1/27/1969
202-458 6/29/1978
272-559 3/12/1996
0.331 ac p.2-57
- (13) CONSOLIDATED RAIL CORPORATION
203-456 9/29/1978
0.417 ac
- (14) PORTER RICHARD D. AND BONNIE S.
208-824 7/1/1980
1.294 ac
- (15) Jerry Valentine
OR.193-1696 12/7/2006
1.0 ac p.3-198
- (16) Harrison H. and Deborah M. Murphy
185-370 10/23/1973
OR.192-3475 11/7/2006
1.0 ac p.4-78
- (17) Melody Lowe
273-400 5/9/1996
OR.187-1602 3/21/2006
1.0 ac p.4-72
- (18) Terry D. Holcomb
272-8 2/15/1996
OR.188-1758 2/15/2006
1.0 ac p.4-78
- (19) MCINTIRE F. RAY AND F. DALE
230-800 4/9/1986
0.39 ac
- (20) BOWEN KENNETH M.
193-410 3/18/1976
OR.188-1758 2/15/2006
0.286 ac p.3-306
- (21) Jeffrey D. Urban
OR.181-3202 7/22/2005
1.0 ac
- (22) Jeffrey D. Urban
OR.181-3202 7/22/2005
0.1 ac p.4-78
- (23) MEYERS CHERYL ANN
160-371 11/8/1966
0.1 ac p.4-78
- (24) YOST, DAMN M.
ULDRICH, JAMES E.
OR.0172-1756 5/24/2004
0.52 ac p.4-78
- (25) YOST, DAMN M.
ULDRICH, JAMES E.
OR.0172-1756 5/24/2004
0.52 ac p.4-78
- (26) CONSOLIDATED RAIL CORPORATION
203-456 9/29/1978
0.269 ac
- (27) CONSOLIDATED RAIL CORPORATION
203-456 9/29/1978
0.13 ac
- (28) CONSOLIDATED RAIL CORPORATION
203-456 9/29/1978
0.13 ac
- (29) CONSOLIDATED RAIL CORPORATION
203-456 9/29/1978
0.13 ac
- (30) CONSOLIDATED RAIL CORPORATION
203-456 9/29/1978
0.09 ac
- (31) CONSOLIDATED RAIL CORPORATION
203-456 9/29/1978
0.02 ac
- (32) CONSOLIDATED RAIL CORPORATION
203-456 9/29/1978
0.06 ac
- (33) RAILROAD SEE CARD
- (34) RAILROAD SEE CARD
- (35) RAILROAD SEE CARD
- (36) RAILROAD SEE CARD
- (37) PAHOONDIS PAUL A. TRUSTEE
OR.0048-417 3/8/2000
OR.0048-420 3/8/2000
0.987 ac p.14-420
- (38) WENGERD JOSHUA A. AND TERESA A.
OR.0174-1 7/23/2004
0.5 ac p.10-135
- (39) HUTCHISON MICHAEL AND NICOLE
278-767 6/26/1997
1.5 ac p.16-460

T-20, R-15, Sec.26
WASHINGTON TWP.

SCALE: 1" = 200'
Last Revision: 11/7/2006

W-25

LET IT BE KNOWN THIS MAP HAS BEEN PREPARED AS A REFERENCE GUIDE TO PROPERTY OWNERSHIP. WE BELIEVE THIS INFORMATION TO BE CORRECT AND CURRENT. HOWEVER, IT IS NOT INTENDED FOR ANY LEGAL USE, WHETHER IT BE IN SALES, TRANSFERS, TRADES, LEASES OF ANY TYPE, ETC., AND DO NOT ACCEPT RESPONSIBILITY FOR ERRORS OF ANY NATURE OR OMISSIONS CONTAINED HEREIN.