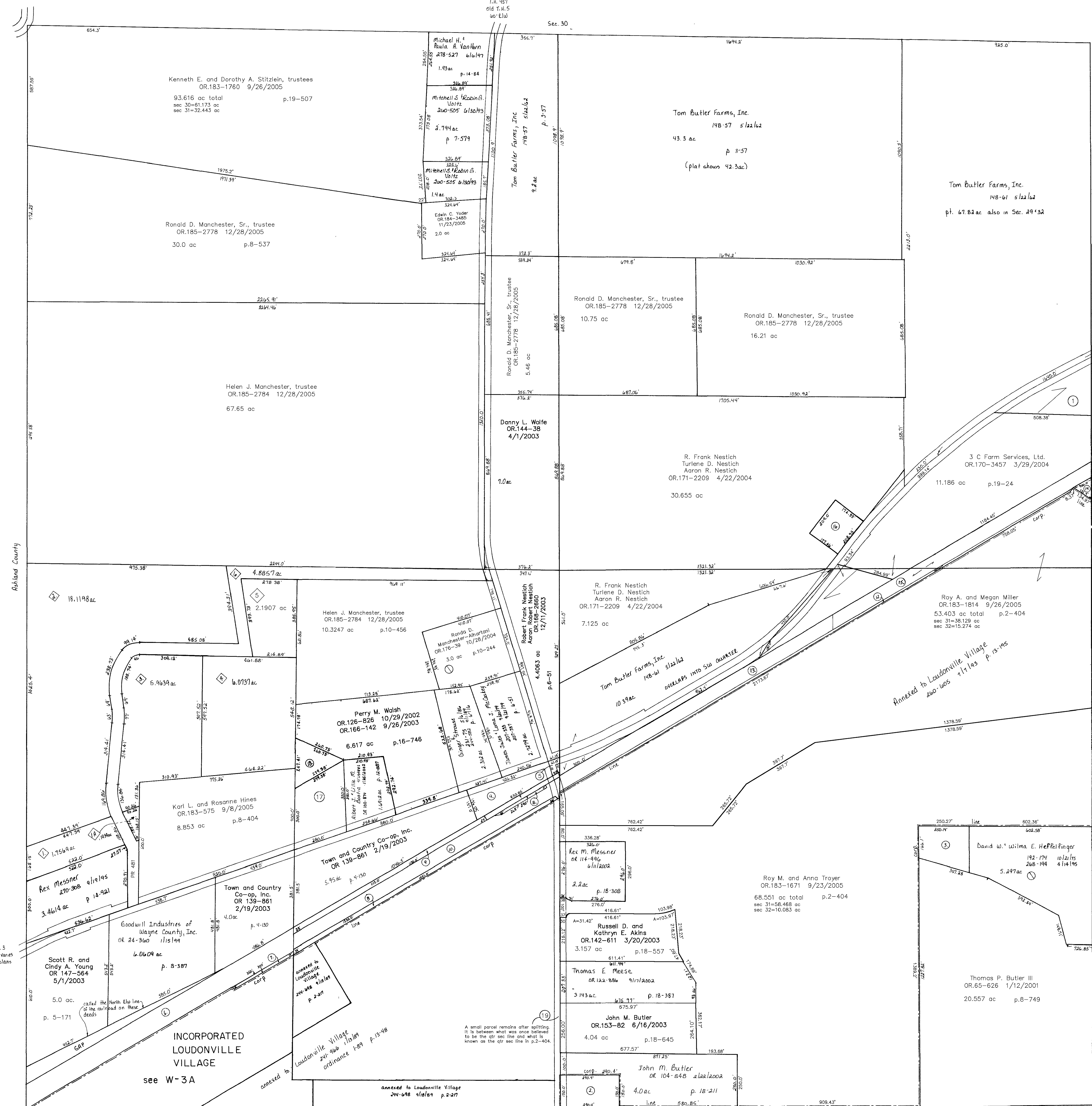


T.H. 457
Old T.H. 5
60' E.L.U.

T.H. 457
Old T.H. 5
60' E.L.U.

Sec. 30



S.A. 3
E.L.U. varies
see plans

Sec. 30

Richard County

S.A. 3
E.L.U. varies
see plans

A small parcel remains after splitting
it in between what was once believed
to be the str. sec. line and what is
known as the str. sec. line in p. 2-404.

T.H. 457
Old T.H. 5
60' E.L.U.

Sec. 6

Dogwood Allotment
Plat 2-298
Platted 7/12/1999

2900390000 19 Pine Island Tree Farms
232-7 8/12/1986
0.071 ac

T-20, R-15, Sec. 31
WASHINGTON TWP.
SCALE: 1"=200'

LET IT BE KNOWN, THIS MAP HAS BEEN PREPARED
AS A REFERENCE GUIDE TO PROPERTY OWNERSHIP.
WE BELIEVE THIS INFORMATION TO BE CORRECT
AND CURRENT, HOWEVER, IT IS NOT INTENDED
FOR ANY LEGAL USE, WHETHER IT BE IN SALES,
TRANSFERS, TRADIS, LEASES OF ANY TYPE, ETC.,
AND DO NOT ACCEPT RESPONSIBILITY FOR ERRORS
OF ANY NATURE OR OMISSIONS CONTAINED HEREIN.

W-41