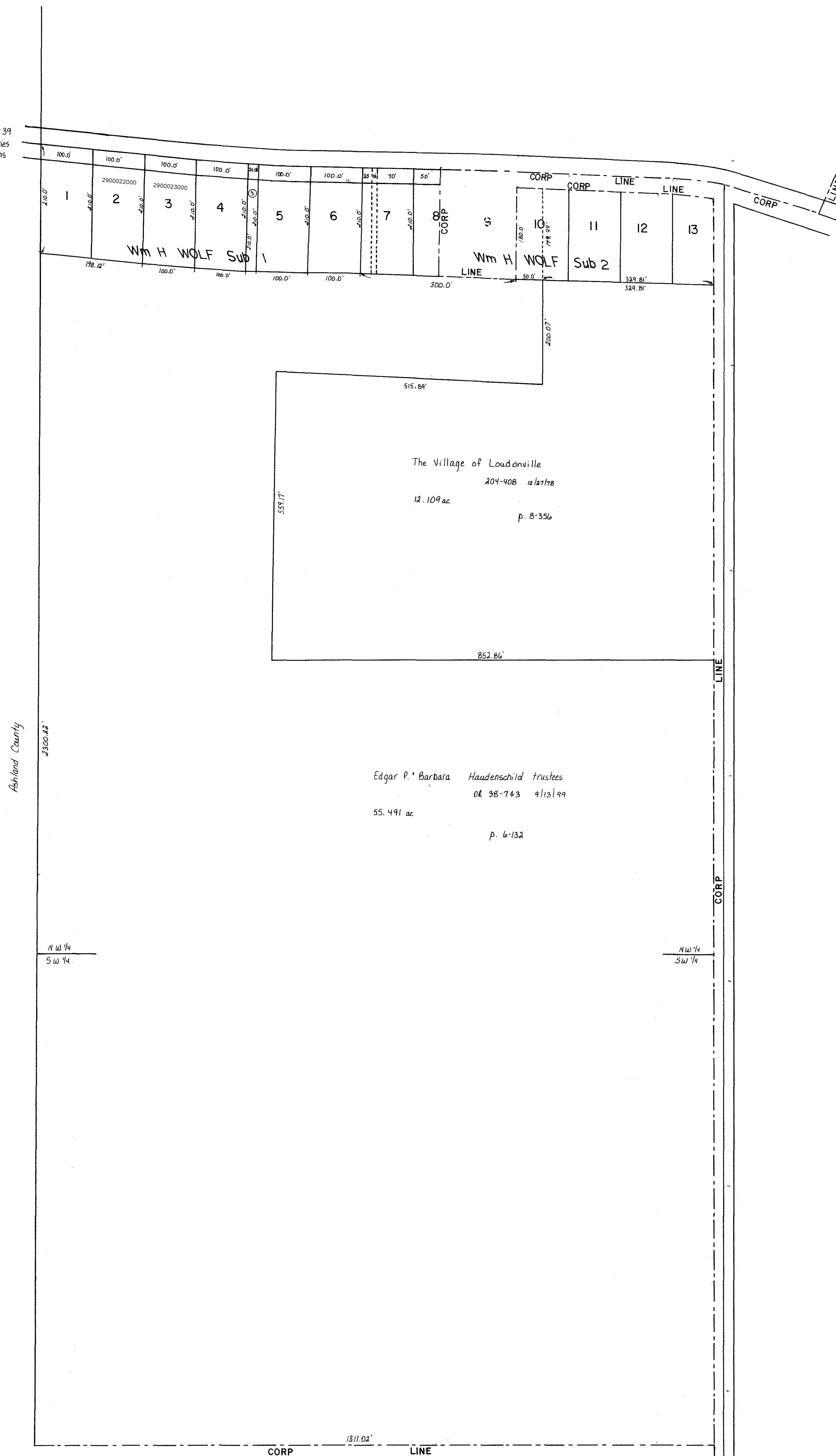


S.R. 60' 39"  
R/W varies  
see plans

S.R. 60' 39"  
R/W varies  
see plans



Wm H Wolf Subdivision 1  
SR 5-386

- 1 2900013000  
Cronebach, Brad A & Angela D  
DV.272-704 3/22/1996  
0.483 ac
- 2 2900022000  
Kenneth W. and Joann M. Utterback  
158-177 4/1/1988  
OR.187-2119 3/13/2006  
0.482 ac
- 3 2900023000  
Kenneth W. and Joann M. Utterback  
199-518 9/9/1977  
OR.187-2119 3/13/2006  
0.483 ac
- 4 2900028000  
Young Robert A and Cheryl A  
DV.260-1009 8/6/1993  
0.483 ac
- 5 2900009000  
Young Scott R & Cynthia A  
OR.62-202 11/9/2000  
0.483 ac
- 6 2900019000  
Young Alice L  
OR.117-673 7/16/2002  
0.483 ac

Wm H Wolf Subdivision 2  
P. 2-17 & 2-18

- MD 7 2900020001  
Young Alice L  
DV.218-39 8/30/1982  
OR.117-673 7/16/2002
- Wpt 7 2900020000  
Young Alice L  
DV.218-39 8/30/1982  
OR.117-673 7/16/2002
- Ept 7 2900010000  
McKinley Mary Ellen  
DV.203-532 10/5/1978  
DV.248-894 10/5/1990
- Wpt 8 2900011000  
McKinley Mary Ellen  
DV.203-532 10/5/1978  
DV.248-894 10/5/1990
- 10 2900044000  
Haudenschild Edgar P & Barbara trustees  
OR.38-743 9/13/1999  
0.206 ac
- 10 2960001000  
The Village of Loudonville  
DV.204-408 12/27/1978  
0.207 ac
- 11 2960002000  
The Village of Loudonville  
DV.204-408 12/27/1978  
0.413 ac
- 12 2960003000  
The Village of Loudonville  
DV.204-408 12/27/1978  
0.413 ac p.8-356
- 13 2960004000  
The Village of Loudonville  
DV.204-408 12/27/1978  
0.318 ac p.8-356

Ashland County

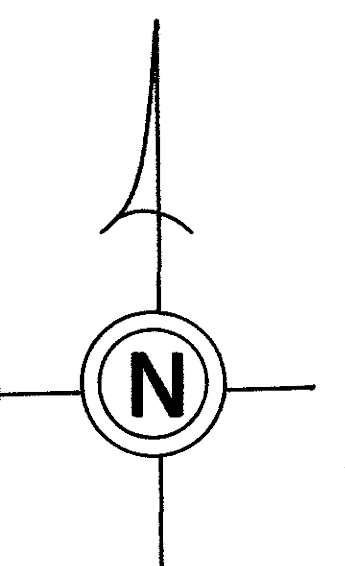
NW 1/4  
SW 1/4

NW 1/4  
SW 1/4

T.H. 455  
Old T.H. 259  
40' R/W

Last Revision: 3/13/2006

LET IT BE KNOWN, THIS MAP HAS BEEN PREPARED AS A REFERENCE GUIDE TO PROPERTY OWNERSHIP. WE BELIEVE THIS INFORMATION TO BE CORRECT AND CURRENT, HOWEVER, IT IS NOT INTENDED FOR ANY LEGAL USE, WHETHER IT BE IN SALES, TRANSFERS, TRADES, LEASES OF ANY TYPE, ETC., AND DO NOT ACCEPT RESPONSIBILITY FOR ERRORS OF ANY NATURE OR OMISSIONS CONTAINED HEREIN.



incorporated  
LOUDONVILLE VILLAGE

T-19, R-15, Sec. 6  
WASHINGTON TWP.

SCALE: 1" = 100'

W-313