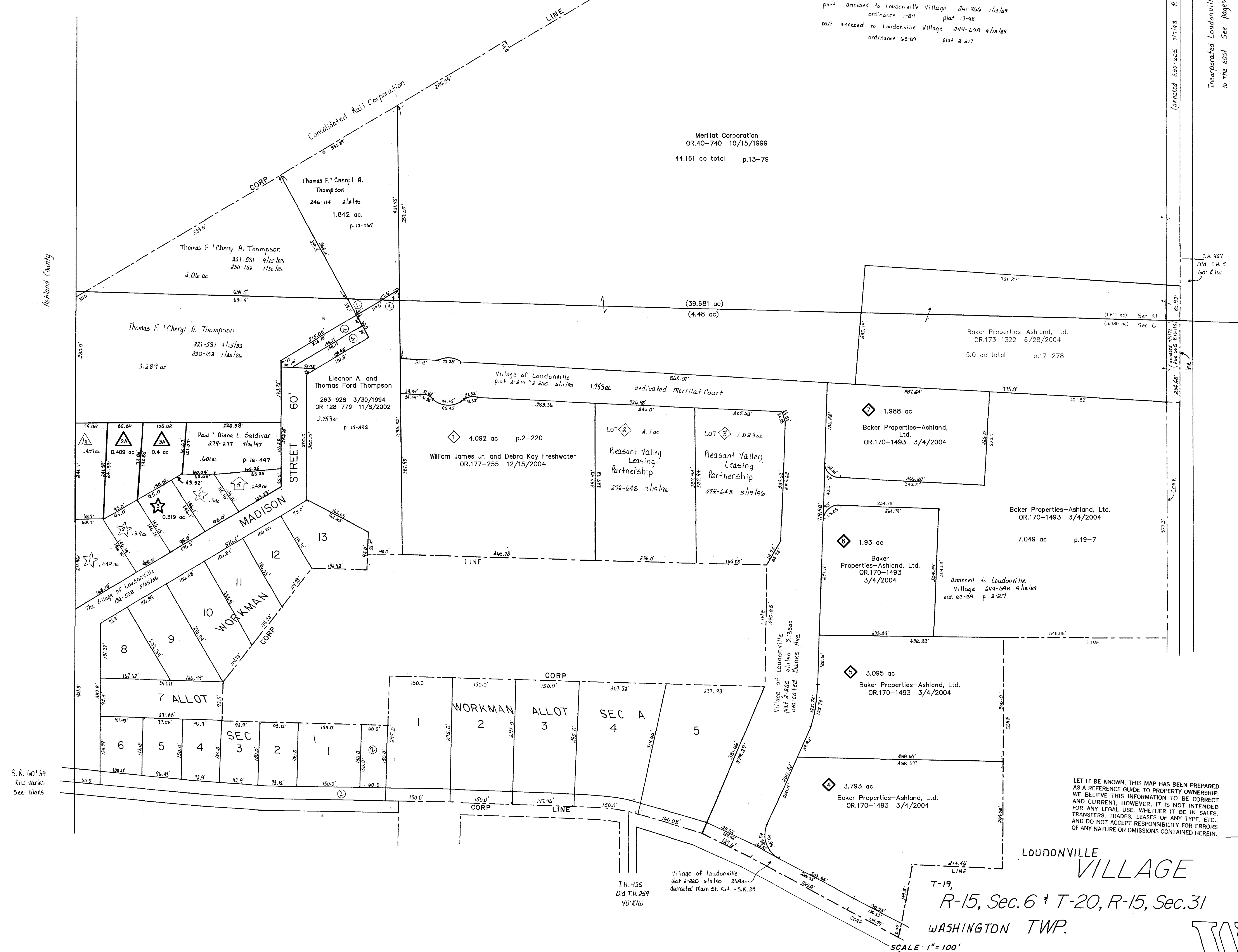


Ashland County



part annexed to Loudonville Village 241-966 1/13/89 ordinance 1-89 plat 13-48
part annexed to Loudonville Village 244-698 4/18/89 ordinance 63-89 plat 2-217

Merrill Corporation
OR.40-740 10/15/1999
44.161 ac total p.13-79

Thomas F. Cheryl A. Thompson
246-114 2/1/10
1.842 ac.
p.12-367

Thomas F. Cheryl A. Thompson
221-531 9/15/83
230-152 1/30/86
2.016 ac

Thomas F. Cheryl A. Thompson
221-531 9/15/83
230-152 1/30/86
3.289 ac

Eleanor A. and Thomas Ford Thompson
263-928 3/30/1994
OR.128-779 11/6/2002
2.153 ac p.12-292

Village of Loudonville
plat 2-219 2-220 2-221 2-222
1.755 ac dedicated Merrill Court

William James Jr. and Debra Kay Freshwater
OR.177-255 12/15/2004
4.082 ac p.2-220

LOT 2 2.1 ac
Pleasant Valley Leasing Partnership
272-648 3/19/06

LOT 3 1.823 ac
Pleasant Valley Leasing Partnership
272-648 3/19/06

Baker Properties-Ashland, Ltd.
OR.173-1322 6/28/2004
5.0 ac total p.17-278

1.988 ac
Baker Properties-Ashland, Ltd.
OR.170-1493 3/4/2004

Baker Properties-Ashland, Ltd.
OR.170-1493 3/4/2004
7.049 ac p.19-7

Baker Properties-Ashland, Ltd.
OR.170-1493 3/4/2004
annexed to Loudonville Village 244-698 4/18/89 ord. 63-89 p. 2-217

3.095 ac
Baker Properties-Ashland, Ltd.
OR.170-1493 3/4/2004

3.793 ac
Baker Properties-Ashland, Ltd.
OR.170-1493 3/4/2004

T.H. 455
Old T.H. 259
40' R/W
Village of Loudonville
plat 2-220 2-221 2-222 2-223
dedicated Main St. Ext. - S.R. 39

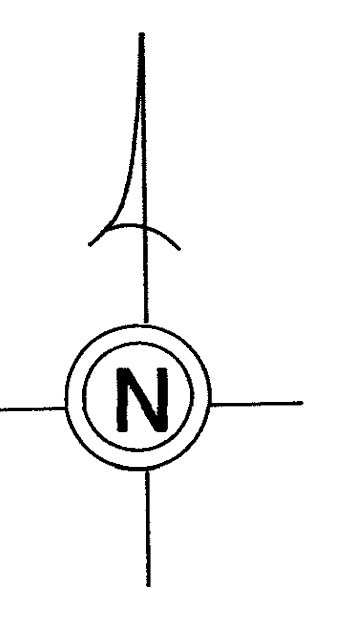
(annexed 200-605 7/7/93 P.V.13-195)

Incorporated Loudonville Village continues to the east. See pages W-4, W-9.

T.H. 457
Old T.H. 5
60' R/W

S.R. 60'39'
R/W varies
see plans

LET IT BE KNOWN, THIS MAP HAS BEEN PREPARED AS A REFERENCE GUIDE TO PROPERTY OWNERSHIP, AND CURRENT, HOWEVER, IT IS NOT INTENDED FOR ANY LEGAL USE, WHETHER IT BE IN SALES, TRANSFERS, TRAVELS, LEASES OF ANY TYPE, ETC., AND DO NOT ACCEPT RESPONSIBILITY FOR ERRORS OF ANY NATURE OR OMISSIONS CONTAINED HEREIN.



LOUDONVILLE VILLAGE
T-19,
R-15, Sec. 6 + T-20, R-15, Sec. 31
WASHINGTON TWP.
SCALE: 1" = 100'

W-3A