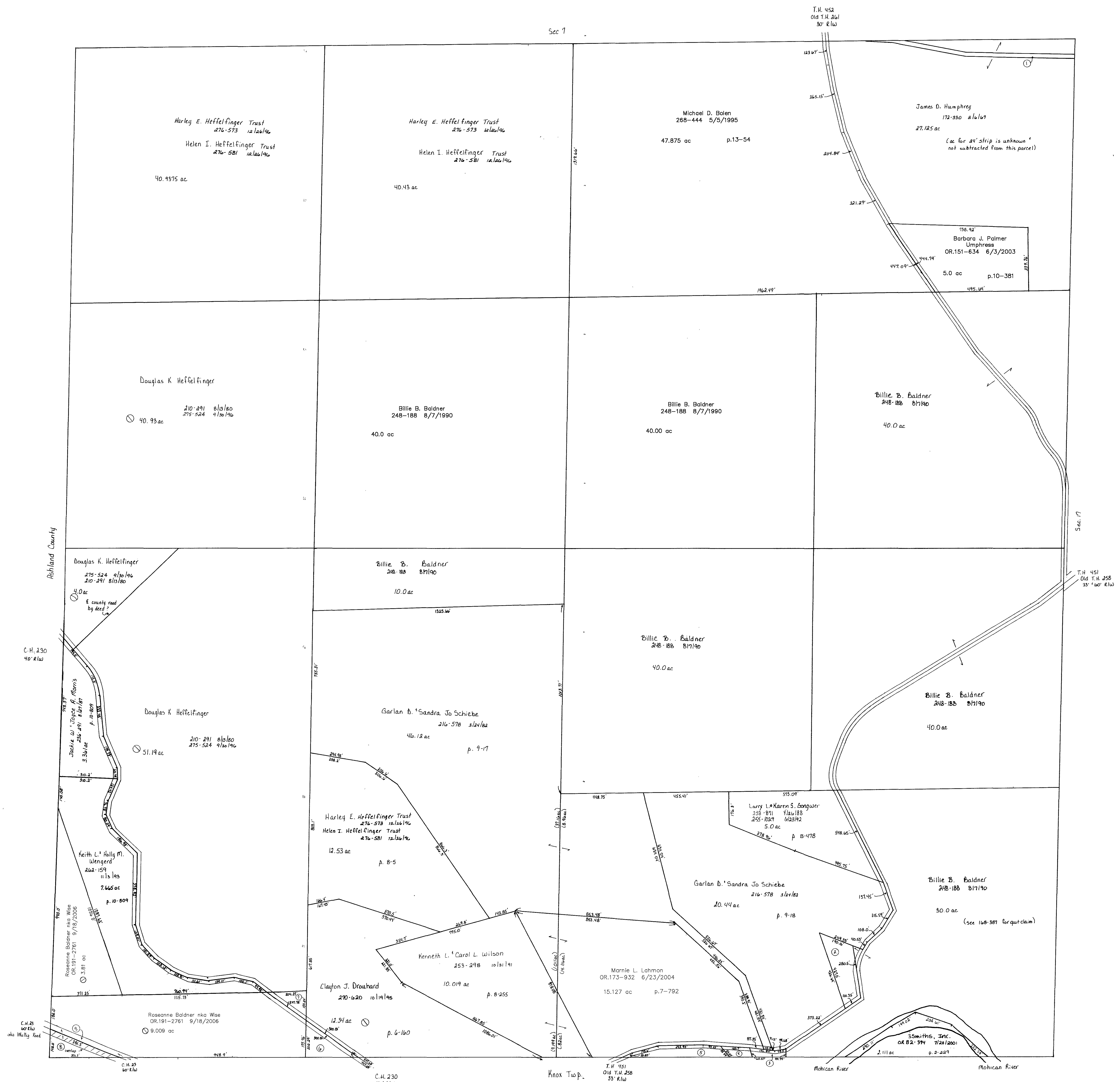


Sec 7



- ① ASHEY JACK III
231-526 6/19/1986
24'STRIP
- ② SKABAR JOHN
256-790 8/18/1992
1.0 ac p.7-217
- ③ LOUDONVILLE CANOE RENTALS, INC.
278-119 5/6/1997
0.22 ac p.8-116
- ④ LOUDONVILLE CANOE RENTALS, INC.
278-119 5/6/1997
0.188 ac p.8-214
- ⑤ HEMBERGER KENNETH E. AND SHIRLEY A.
268-350 4/27/1995
0.696 ac p.8-256 SFT
- ⑥ BAKER, NORMA M.
VANHORN, WANDA J.
236-202 8/13/1987
0.66 ac p.8-357
- ⑦ ZODY MICKEY
222-256 12/5/1983
0.361 ac p.10-217
- ⑧ SARGAN CLEMENT E. AND THERESA E.
242-78 1/24/1989
0.83 ac p.10-855
- ⑨ COUNTY OF HOLMES
113-507 3/13/1944
PT. 22.39 ac

T-19, R-15, Sec. 18
WASHINGTON TWP.

SCALE: 1"=200'

Last Revision: 9/18/2006

LET IT BE KNOWN, THIS MAP HAS BEEN PREPARED AS A REFERENCE GUIDE TO PROPERTY OWNERSHIP. WE BELIEVE THIS INFORMATION TO BE CORRECT AND CURRENT, HOWEVER, IT IS NOT INTENDED FOR ANY LEGAL USE, WHETHER IT BE IN SALES, TRANSFERS, TRADES, LEASES OF ANY TYPE, ETC., AND DO NOT ACCEPT RESPONSIBILITY FOR ERRORS OF ANY NATURE OR OMISSIONS CONTAINED HEREIN.

