

- 1 REUTER FRED C. AND ROSEMARY
244-576 8/31/1989
1.0 ac p.12-286
- 2 REUTER FRED C. AND ROSEMARY
244-576 8/31/1989
1.025 ac p.8-773
- 3 LONG JEFFREY L. AND JACQUELINE A.
96-0055-826 7/29/2000
1.0 ac
- 4 BLACK JEREMY L. AND DEANNA D.
OR.0117-450 7/12/2002
0.256 ac

- 5 BLACK JEREMY L. AND DEANNA D.
OR.0117-450 7/12/2002
0.185 ac
- 6 CONSOLIDATED RAIL CORPORATION
203-456 9/29/1978
0.541 ac
- 7 CONSOLIDATED RAIL CORPORATION
203-456 9/29/1978
0.855 ac
- 8 RAILROAD SEE CARD

- 9 CONSOLIDATED RAIL CORPORATION
203-456 9/29/1978
0.631 ac
- 10 CONSOLIDATED RAIL CORPORATION
203-456 9/29/1978
1.138 ac
- 11 RAILROAD SEE CARD
- 12 CONSOLIDATED RAIL CORPORATION
203-456 9/29/1978
0.269 ac
- 13 CONSOLIDATED RAIL CORPORATION
203-456 9/29/1978
0.132 ac

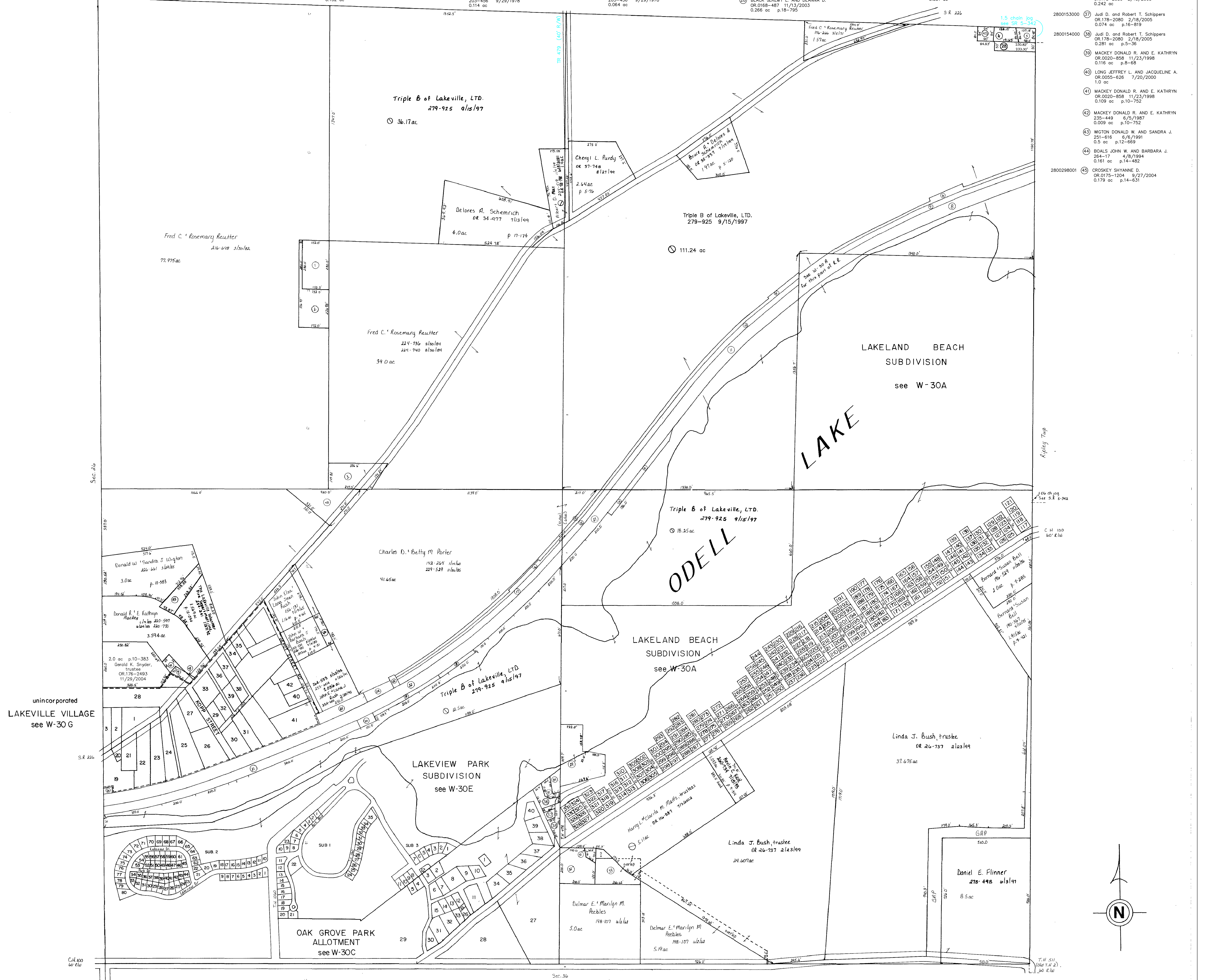
- 14 CONSOLIDATED RAIL CORPORATION
203-456 9/29/1978
0.49 ac
- 15 CONSOLIDATED RAIL CORPORATION
203-456 9/29/1978
0.32 ac
- 16 CONSOLIDATED RAIL CORPORATION
203-456 9/29/1978
0.614 ac
- 17 CONSOLIDATED RAIL CORPORATION
203-456 9/29/1978
0.987 ac
- 18 CONSOLIDATED RAIL CORPORATION
203-456 9/29/1978
0.114 ac

- 19 CONSOLIDATED RAIL CORPORATION
203-456 9/29/1978
0.222 ac
- 20 CONSOLIDATED RAIL CORPORATION
203-456 9/29/1978
0.11 ac
- 21 CONSOLIDATED RAIL CORPORATION
203-456 9/29/1978
1.881 ac
- 22 RAILROAD SEE CARD
- 23 CONSOLIDATED RAIL CORPORATION
203-456 9/29/1978
0.064 ac

- 24 CONSOLIDATED RAIL CORPORATION
203-456 9/29/1978
0.222 ac
- 25 CONSOLIDATED RAIL CORPORATION
203-456 9/29/1978
0.41 ac
- 26 CONSOLIDATED RAIL CORPORATION
203-456 9/29/1978
0.04 ac
- 27 RAILROAD SEE CARD
- 28 BLACK JEREMY L. AND DEANNA D.
OR.0117-450 7/12/2002
0.266 ac p.18-795

- 29 ELLIS DONALD D. AND MARY L., TRUSTEES
279-827 9/5/1997
1.484 ac p.12-516
- 30 NOT USED
- 31 HUTCHISON ROGER D.
186-601 3/19/1974
0.079 ac
- 32 HUTCHISON ROGER D.
186-601 3/19/1974
0.831 ac

- 33 PEEBLES DELMAR E. AND MARILYN M.
148-107 6/2/1962
0.65 ac SFT
- 34 ELLIS DONALD D. AND MARY L., TRUSTEES
279-827 9/5/1997
0.213 ac p.12-516
- 35 MOSER IVAN D. AND VIVIAN J.
206-485 7/12/1979
0.181 ac p.5-64
- 36 Judi D. and Robert T. Schippers
OR.178-2080 2/18/2005
0.242 ac
- 37 Judi D. and Robert T. Schippers
OR.178-2080 2/18/2005
0.074 ac p.16-819
- 38 Judi D. and Robert T. Schippers
OR.178-2080 2/18/2005
0.281 ac p.5-36
- 39 MACKAY DONALD R. AND E. KATHRYN
OR.0020-858 11/23/1998
0.116 ac p.8-68
- 40 LONG JEFFREY L. AND JACQUELINE A.
OR.0055-626 7/20/2000
1.0 ac
- 41 MACKAY DONALD R. AND E. KATHRYN
OR.0020-858 11/23/1998
0.109 ac p.10-752
- 42 MACKAY DONALD R. AND E. KATHRYN
235-449 6/5/1987
0.009 ac p.10-752
- 43 WIGTON DONALD W. AND SANDRA J.
251-616 6/6/1991
0.5 ac p.12-669
- 44 BOALS JOHN W. AND BARBARA J.
264-17 4/8/1994
0.181 ac p.14-482
- 45 CROSKY SHYANNE D.
OR.0175-1204 9/27/2004
0.179 ac p.14-631



T-20, R-15, Sec. 25
WASHINGTON TWP.
SCALE: 1" = 200'

Last Revision: 2/18/2005

LET IT BE KNOWN, THIS MAP HAS BEEN PREPARED AS A REFERENCE GUIDE TO PROPERTY OWNERSHIP. WE BELIEVE THIS INFORMATION TO BE CORRECT AND CURRENT, HOWEVER, IT IS NOT INTENDED FOR ANY LEGAL USE, WHETHER IT BE IN SALES, TRANSFERS, TRADES, LEASES OF ANY TYPE, ETC., AND DO NOT ACCEPT RESPONSIBILITY FOR ERRORS OF ANY NATURE OR OMISSIONS CONTAINED HEREIN.

W-300