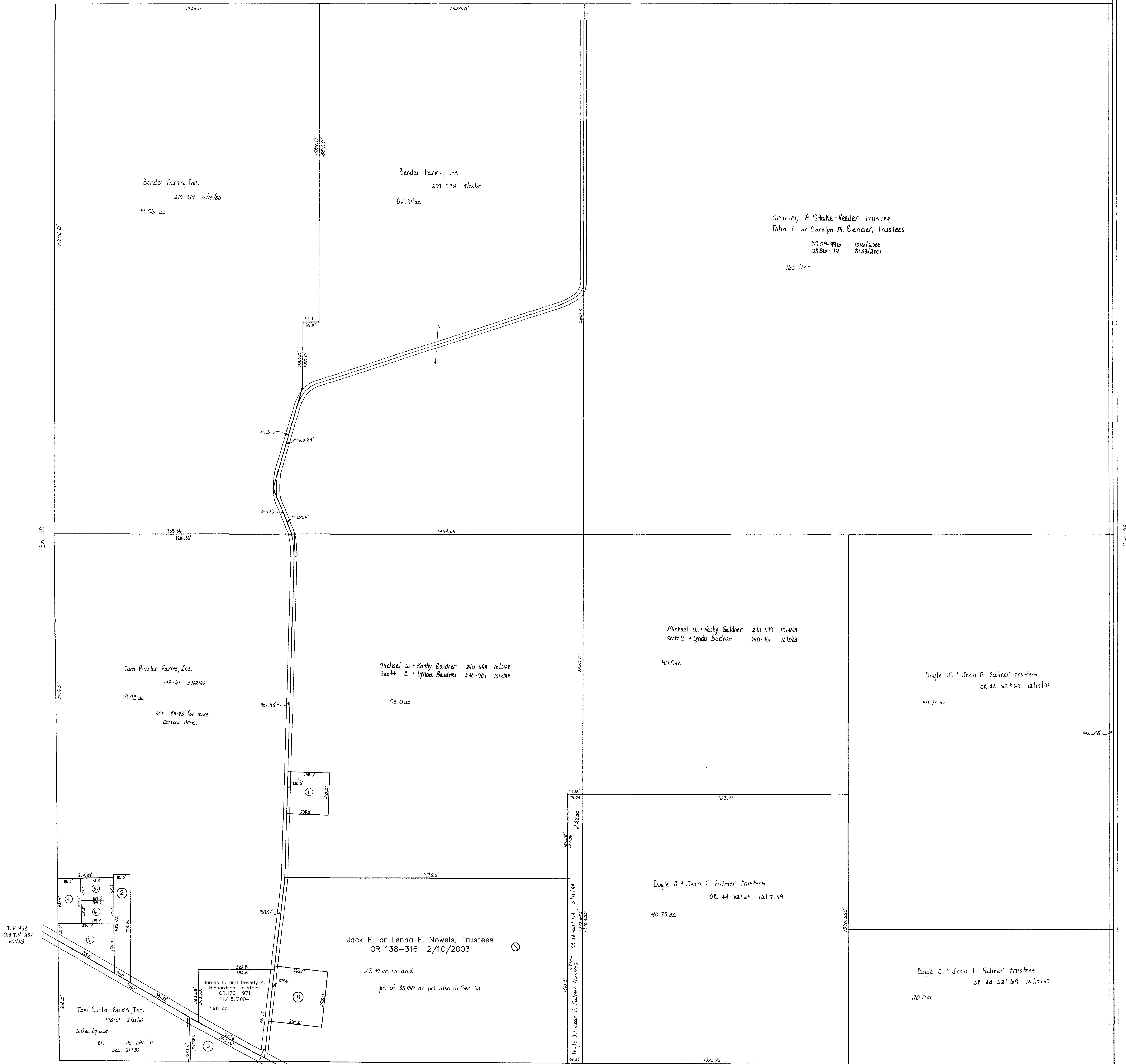


T.H. 459 -  
Old T.H. 255  
80' E/W

T.H. 460  
Old T.H. 425  
90' E/W

Ashland County



- ① BALDNER MICHAEL W. AND KATHY JO  
200-850 12/23/1977  
OR 0127-898 11/8/2002  
OR 0127-900 11/8/2002  
1.0 ac p.8-127
- ② A.R.N., LTD.  
OR 0169-2505 1/29/2004  
0.97 ac
- ③ Kenneth E. and Dorothy A. Stitzlein, Trustees  
OR 183-1760 9/26/2005  
0.758 ac p.2-405
- ④ WASHINGTON TWP. TRUSTEES  
252-338 7/29/1991  
0.613 ac
- ⑤ WASHINGTON TWP. TRUSTEES  
252-338 7/29/1991  
0.42 ac
- ⑥ WASHINGTON TWP. TRUSTEES  
252-338 7/29/1991  
0.42 ac
- ⑦ WASHINGTON TWP. TRUSTEES  
GARAGE LOCATION  
252-338 7/29/1991  
1.007 ac
- ⑧ SLOAN DEL E. AND RINDA L.  
OR 0152-487 6/6/2003  
1.677 ac

Last Revision: 9/26/2005

T-20, R-15, Sec.29  
WASHINGTON TWP.

SCALE: 1"=200'

LET IT BE KNOWN, THIS MAP HAS BEEN PREPARED AS A REFERENCE GUIDE TO PROPERTY OWNERSHIP. WE BELIEVE THIS INFORMATION TO BE CORRECT AND CURRENT, HOWEVER, IT IS NOT INTENDED FOR ANY LEGAL USE, WHETHER IT BE IN SALES, TRANSFERS, TRADES, LEASES OF ANY TYPE, ETC., AND DO NOT ACCEPT RESPONSIBILITY FOR ERRORS OF ANY NATURE OR OMISSIONS CONTAINED HEREIN.

W-10