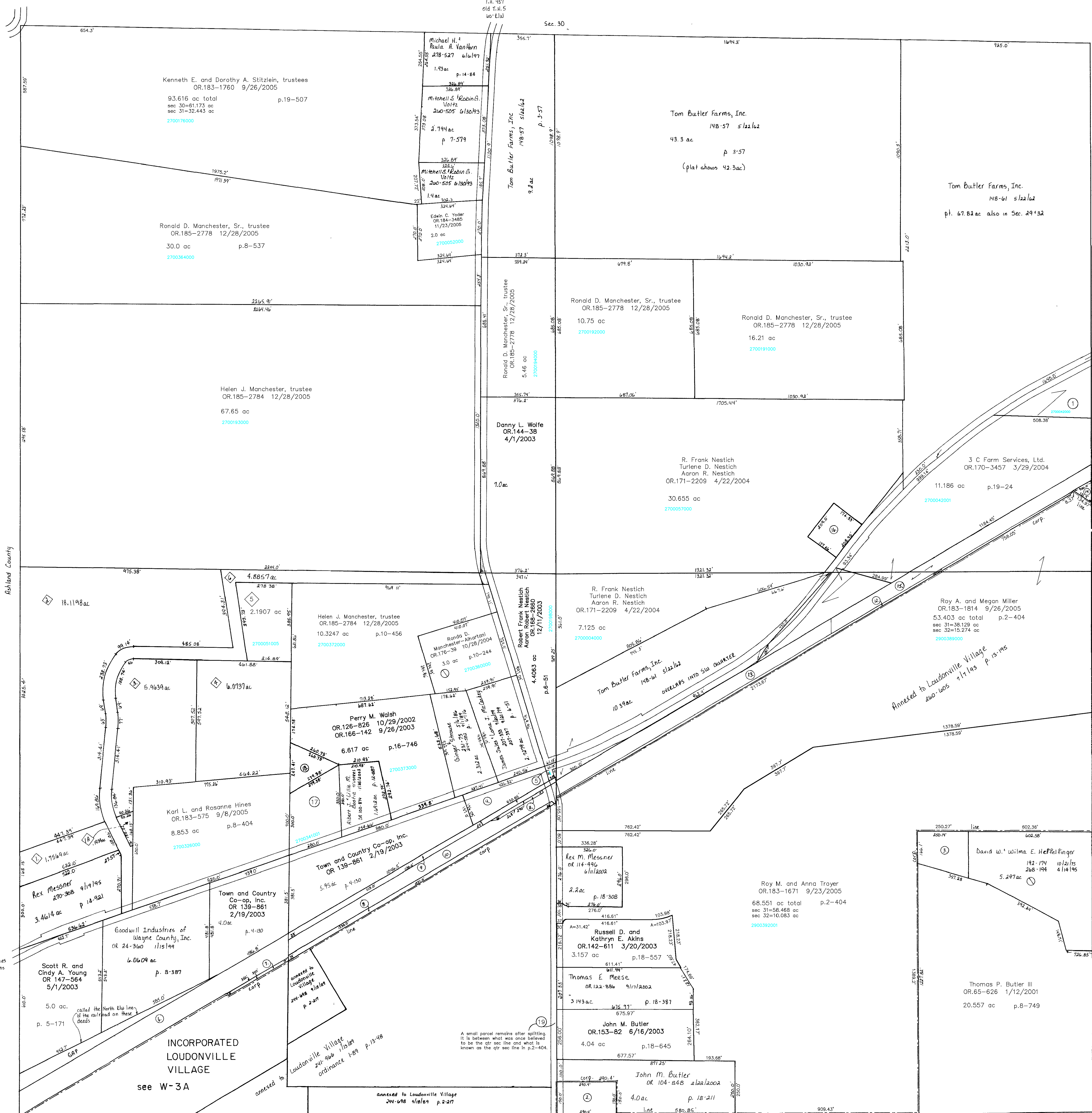


T.H. 457  
Old T.H. 5  
60' E.L.U.

Sec. 30



- 2700042000 ① TOM BUTLER FARMS, INC. 148-61 5/22/1962 FT 9.114 ac
- ② BUTLER JOHN M. 234-453 3/12/1987 1.0 ac
- ③ HEFFELFINGER DAVID W. AND WILMA E. 192-174 10/21/1975 268-194 4/14/1995 1.156 ac S.F.T.
- ④ MCCASKEY JAMES JULES AND LOMA J. 207-333 9/20/1979 1.275 ac p.6-51
- 2700317000 ⑤ YOUNG NANCY F. 192-57 10/16/1975 OR.0175-2803 10/21/2004 0.0824 ac p.7-519
- ⑥ RAILROAD SEE CARD
- ⑦ CONSOLIDATED RAIL CORPORATION 203-456 9/29/1978 0.12 ac

- ⑧ CONSOLIDATED RAIL CORPORATION 203-456 9/29/1978 0.88 ac
- ⑨ CONSOLIDATED RAIL CORPORATION 203-456 9/29/1978 0.62 ac
- ⑩ CONSOLIDATED RAIL CORPORATION 203-456 9/29/1978 0.064 ac
- ⑪ CONSOLIDATED RAIL CORPORATION 203-456 9/29/1978 0.064 ac
- ⑫ RAILROAD SEE CARD
- ⑬ RAILROAD SEE CARD
- ⑭ CONSOLIDATED RAIL CORPORATION 203-456 9/29/1978 FT 4.564 ac
- ⑮ CONSOLIDATED RAIL CORPORATION 203-456 9/29/1978
- ⑯ MILLER WALTER R. JR. AND QUIGUANDETTA 260-864 7/8/1993 0.845 ac p.12-936

- 2700341001 ⑰ SPARKLE STOR-ALL LOUDONVILLE, L.L.C. OR.172-2167 5/24/2004 1.9063 ac p.11-189
- ⑱ NYHART CHESTER AND JOYCE OR.0135-807 1/17/2003 0.6798 ac p.12-887
- 2900390000 ⑲ Pine Island Tree Farms 232-7 8/13/1986 0.071 ac

- T.H. 457 Old T.H. 5 60' E.L.U.
- Sec. 6
- ⑳ Dogwood Allotment Plat 2-298 Platted 7/12/1999

- ① HEIMBERGER KENNETH E. AND SHIRLEY A. OR.0048-56 2/29/2000 1.7569 ac
- ② HEIMBERGER KENNETH E. AND SHIRLEY A. OR.0048-56 2/29/2000 0.1934 ac
- ③ NYHART WILLIAM B. AND CANDACE L. OR.0068-549 2/21/2001 5.9636 ac
- ④ NYHART CHESTER AND JOYCE OR.0135-807 1/17/2003 6.0737 ac
- ⑤ Ruth A. Ross OR.177-3067 2.9001 ac 1/25/2005
- ⑥ HEIMBERGER KENNETH E. AND SHIRLEY A. OR.0048-56 2/29/2000 4.8857 ac

T-20, R-15, Sec. 31  
WASHINGTON TWP.

SCALE: 1"=200'

Last Revision: 12/28/2005

LET IT BE KNOWN, THIS MAP HAS BEEN PREPARED AS A REFERENCE GUIDE TO PROPERTY OWNERSHIP. WE BELIEVE THIS INFORMATION TO BE CORRECT FOR ANY LEGAL USE, WHETHER IT BE IN SALES, TRANSFERS, TRADIS, LEASES OF ANY TYPE, ETC., AND DO NOT ACCEPT RESPONSIBILITY FOR ERRORS OF ANY NATURE OR OMISSIONS CONTAINED HEREIN.

