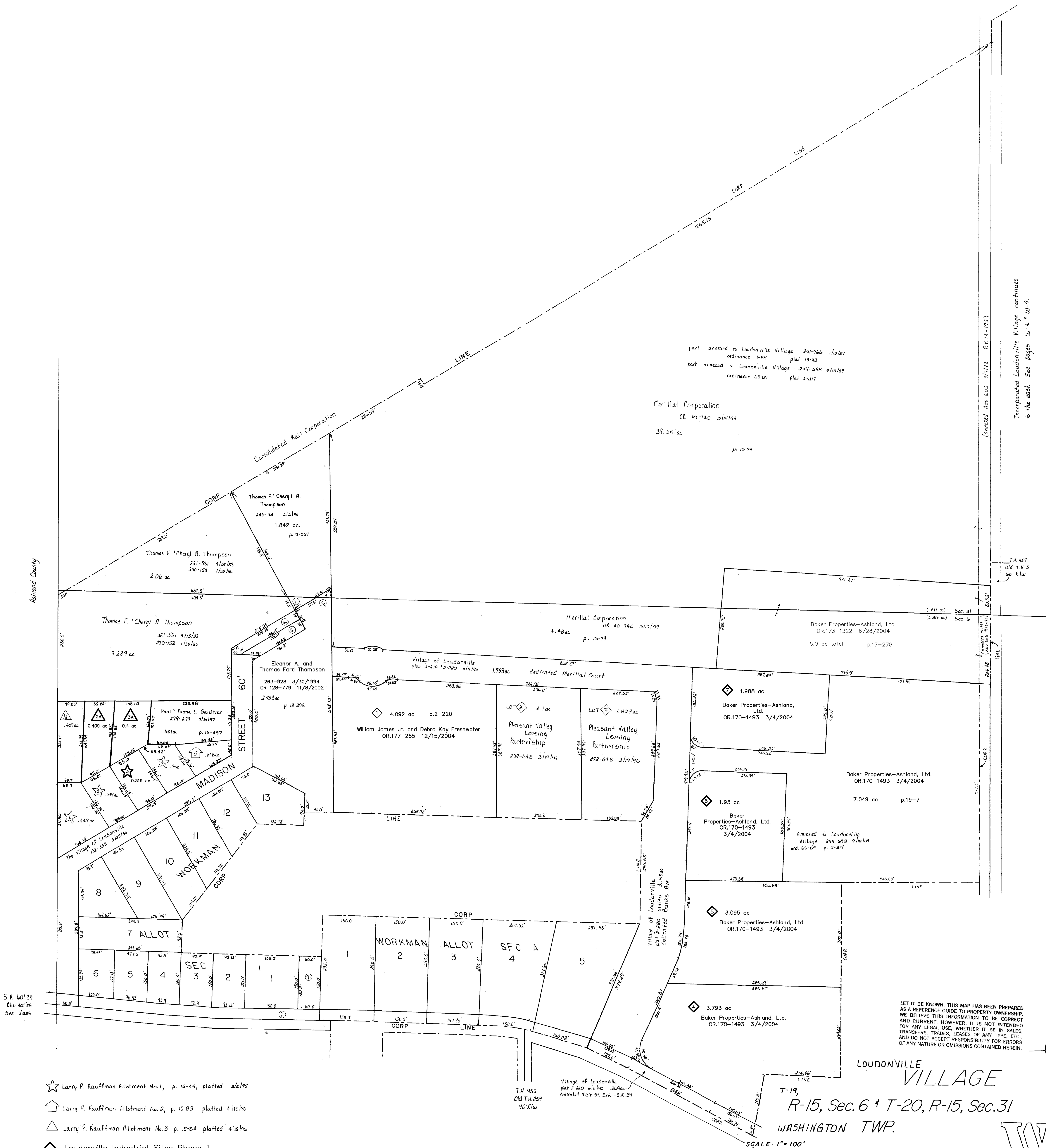


Ashland County



part annexed to Loudonville Village 241-966 1/13/89  
 ordinance 1-89 plat 13-48  
 part annexed to Loudonville Village 244-698 4/18/89  
 ordinance 63-89 plat 2-217

Merillat Corporation  
 OR 40-740 10/15/99  
 39.681 ac  
 p. 13-79

Thomas F. Cheryl A. Thompson  
 246-114 2/1/80  
 1.842 ac  
 p. 12-367

Thomas F. Cheryl A. Thompson  
 221-531 9/15/83  
 250-152 1/30/86  
 2.016 ac

Thomas F. Cheryl A. Thompson  
 221-531 9/15/83  
 250-152 1/30/86  
 3.289 ac

Eleanor A. and Thomas Ford Thompson  
 263-928 3/30/1994  
 OR 128-779 11/6/2002  
 2.153 ac p. 12-292

William James Jr. and Debra Kay Freshwater  
 OR.177-255 12/15/2004  
 4.082 ac p.2-220

LOT 2 2.1 ac  
 Pleasant Valley Leasing Partnership  
 272-648 3/19/96

LOT 3 1.823 ac  
 Pleasant Valley Leasing Partnership  
 272-648 3/19/96

Merillat Corporation  
 OR 40-740 10/15/99  
 4.48 ac p. 13-79

Baker Properties-Ashland, Ltd.  
 OR.173-1322 6/28/2004  
 5.0 ac total p.17-278

1.988 ac  
 Baker Properties-Ashland, Ltd.  
 OR.170-1493 3/4/2004

Baker Properties-Ashland, Ltd.  
 OR.170-1493 3/4/2004  
 7.049 ac p.19-7

3.095 ac  
 Baker Properties-Ashland, Ltd.  
 OR.170-1493 3/4/2004

3.793 ac  
 Baker Properties-Ashland, Ltd.  
 OR.170-1493 3/4/2004

Incorporated Loudonville Village continues to the east. See pages W-4, W-9.

T.H. 457  
 Old T.H. 5  
 60' R/W

S.R. 60'39'  
 R/W varies  
 see plans

- ☆ Larrg P. Kauffman Allotment No.1, p. 15-49, platted 3/2/95
- ⬆ Larrg P. Kauffman Allotment No.2, p. 15-83 platted 4/15/96
- △ Larrg P. Kauffman Allotment No.3 p. 15-84 platted 4/15/96
- ◇ Loudonville Industrial Sites Phase 1  
 Plat 2-220 Platted 6/11/1990

T.H. 455  
 Old T.H. 259  
 40' R/W

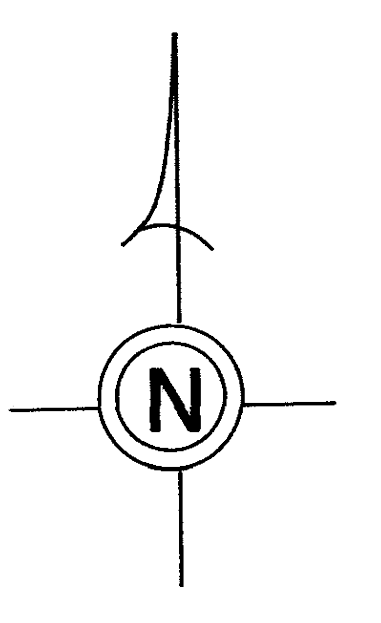
Village of Loudonville  
 plat 2-220 6/11/90 314 ac  
 dedicated Main St. Ext. - S.R. 39

Village of Loudonville  
 plat 2-220 6/11/90 314 ac  
 dedicated Banks Ave

SCALE: 1" = 100'

LET IT BE KNOWN, THIS MAP HAS BEEN PREPARED AS A REFERENCE GUIDE TO PROPERTY OWNERSHIP, AND CURRENT, HOWEVER, IT IS NOT INTENDED FOR ANY LEGAL USE, WHETHER IT BE IN SALES, TRANSFERS, TRAVELS, LEASES OF ANY TYPE, ETC., AND DO NOT ACCEPT RESPONSIBILITY FOR ERRORS OF ANY NATURE OR OMISSIONS CONTAINED HEREIN.

LOUDONVILLE VILLAGE  
 T-19,  
 R-15, Sec. 6 + T-20, R-15, Sec. 31  
 WASHINGTON TWP.



W-3A

Last Revision: 12/15/2004