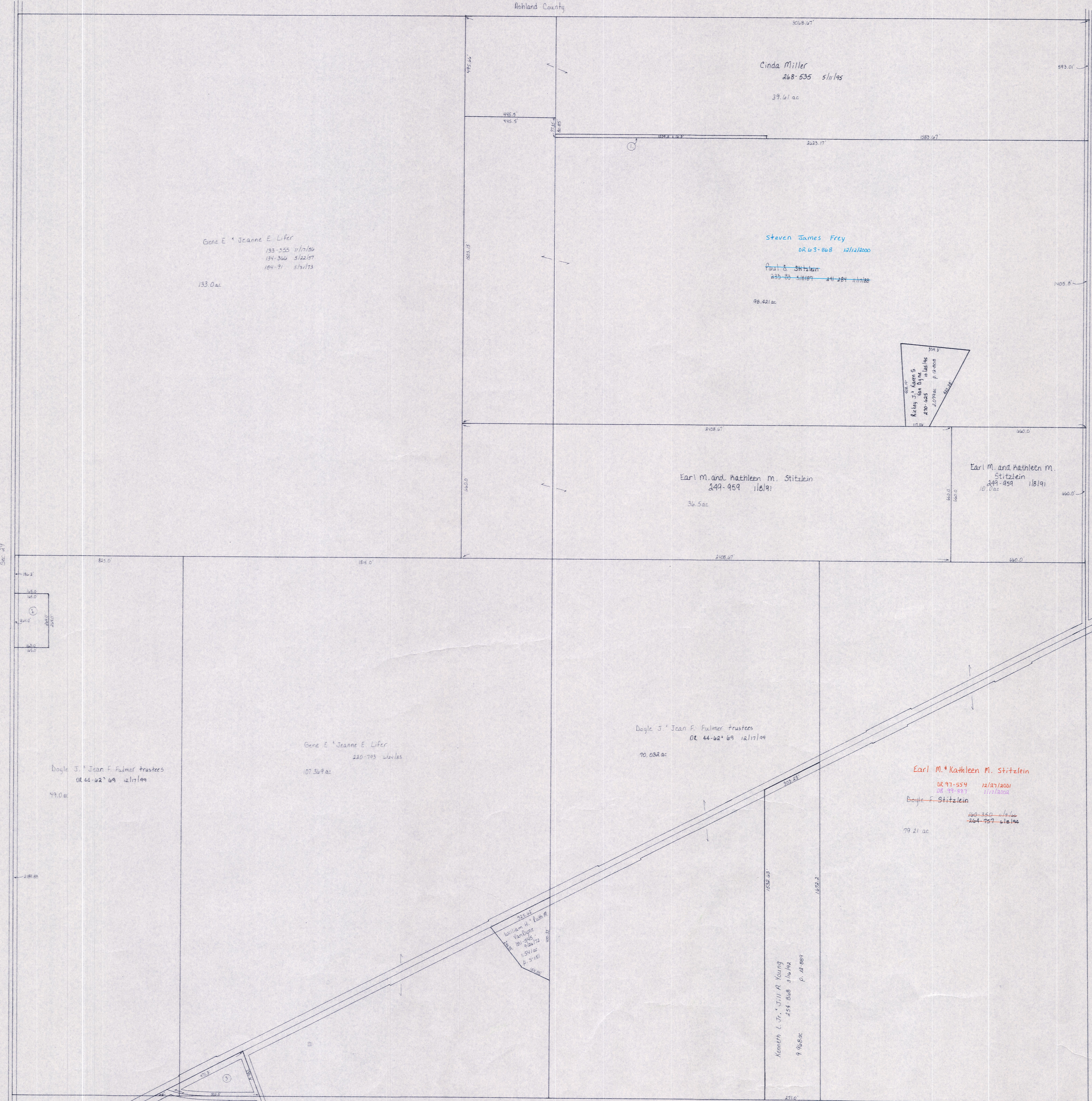


T.H. 460
Old T.H. 385
40' Elev

T.H. 461
Old T.H. 385
30' Elev

Ashland County



Sec. 29

Sec. 27

T.H. 460
Old T.H. 385
40' Elev

S.R. 3
R/W varies
see plans

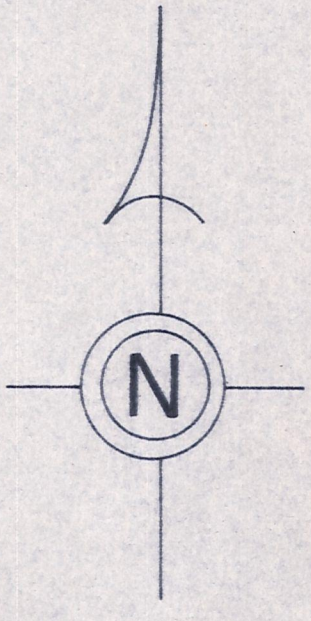
Ch. 220
R/W Unimproved

Ch. 22
40' Elev

Sec. 33

Kenneth L. Jr. & Jill A. Young
254 808 21/1/84
p. 11 889

T-20, R-15, Sec. 28
WASHINGTON TWP.
SCALE: 1"=200'



LET IT BE KNOWN, THIS MAP HAS BEEN PREPARED AS A REFERENCE GUIDE TO PROPERTY OWNERSHIP. WE BELIEVE THIS INFORMATION TO BE CORRECT AND CURRENT, HOWEVER, IT IS NOT INTENDED FOR ANY LEGAL USE, WHETHER IT BE IN SALES, TRANSFERS, TRADES, LEASES OF ANY TYPE, ETC., AND DO NOT ACCEPT RESPONSIBILITY FOR ERRORS OF ANY NATURE OR OMISSIONS CONTAINED HEREIN.

W-15