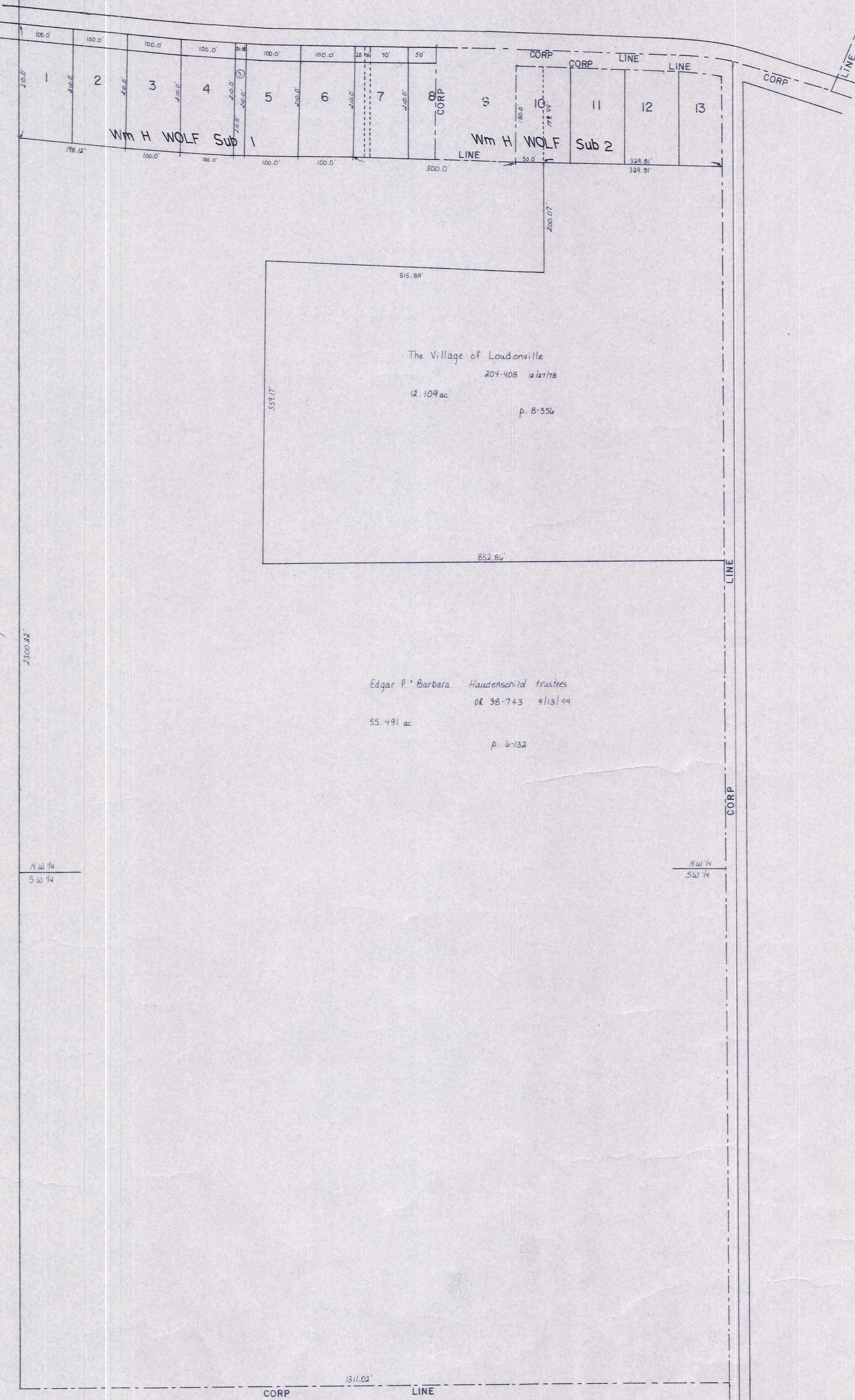


S.R. 60°39'
R/W varies
See plans



S.R. 60°39'
R/W varies
see plans

Abraham County
2300.42'

Edgar P. Barbara Haudenschild Trustees
OK 38-743 9/13/99
55.491 ac
p. 6-732

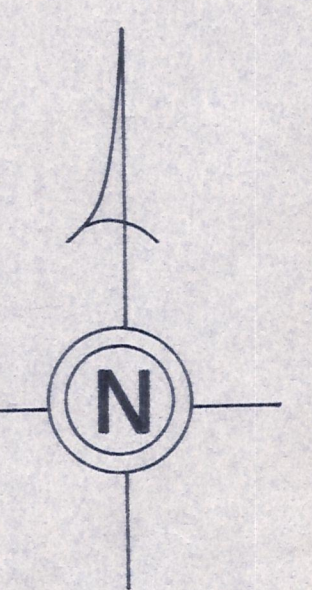
The Village of Loudonville
204-408 12/17/78
12.109 ac
p. 8-356

N 1/4
S 1/4

N 1/4
S 1/4

T.H. 455
Old T.H. 259
40' R/W

LET IT BE KNOWN, THIS MAP HAS BEEN PREPARED AS A REFERENCE GUIDE TO PROPERTY OWNERSHIP. WE BELIEVE THIS INFORMATION TO BE CORRECT AND CURRENT. HOWEVER, IT IS NOT INTENDED FOR ANY LEGAL USE, WHETHER IT BE IN SALES, TRANSFERS, TRADES, LEASES OF ANY TYPE, ETC., AND DO NOT ACCEPT RESPONSIBILITY FOR ERRORS OF ANY NATURE OR OMISSIONS CONTAINED HEREIN.



incorporated
LOUDONVILLE VILLAGE
T-19, R-15, Sec. 6
WASHINGTON TWP.
SCALE 1" = 100'

W-313