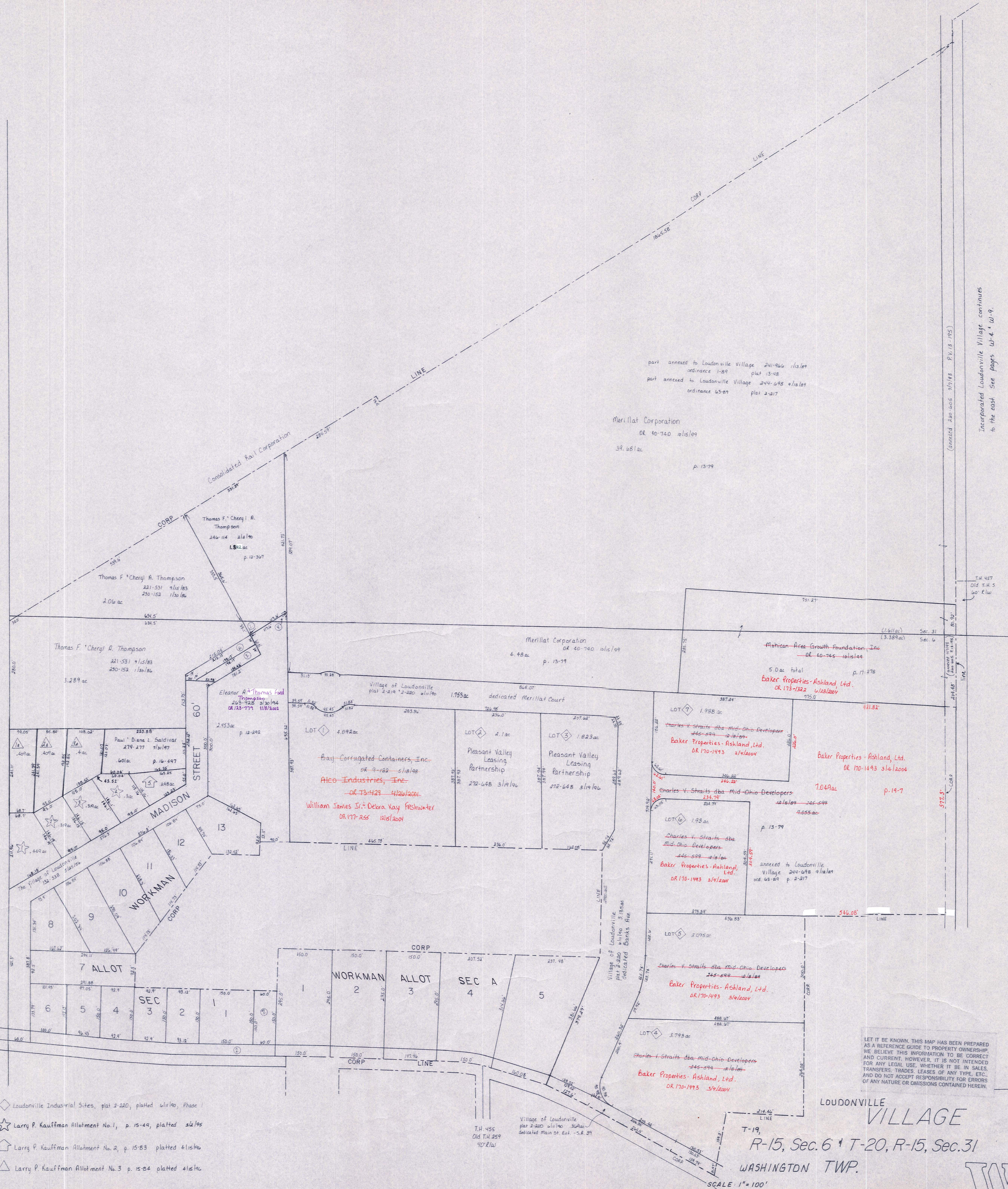


Ashland County



part annexed to Loudonville Village 241-926 1/15/89 ordinance 1-89 plat 13-18  
 part annexed to Loudonville Village 244-698 9/18/89 ordinance 65-89 plat 2-217

Merrillat Corporation  
 OR 40-740 10/16/89  
 39.881 ac  
 p. 13-79

Thomas F. & Cheryl A. Thompson  
 241-114 2/16/80  
 1.842 ac  
 p. 12-267

Thomas F. & Cheryl A. Thompson  
 221-531 9/15/83  
 250-152 1/30/86  
 2.06 ac

Thomas F. & Cheryl A. Thompson  
 221-531 9/15/83  
 250-152 1/30/86  
 3.289 ac

Eleanor A. & Thomas A. Thompson  
 265-725 3/30/94  
 OR 133-779 11/11/2005  
 2.853 ac  
 p. 12-292

Merrillat Corporation  
 OR 40-740 10/16/89  
 4.48 ac  
 p. 13-79

African Area Growth Foundation, Inc.  
 OR 40-745 10/16/89  
 5.0 ac total  
 p. 17-278

Baker Properties - Ashland Ltd.  
 OR 173-1322 1/28/2004

Bay-Corrugated Containers, Inc.  
 OR 9-182 5/18/88

Aleo Industries, Inc.  
 OR 73-429 4/16/2001

William James Jr. & Debra Kay Freshwater  
 OR 177-255 10/16/2001

Charles V. Straits dba Mid-Ohio Developers  
 246-599 12/16/89

Baker Properties - Ashland Ltd.  
 OR 170-1493 3/14/2004

Baker Properties - Ashland Ltd.  
 OR 170-1493 3/14/2004

Charles V. Straits dba Mid-Ohio Developers  
 246-599 12/16/89

Baker Properties - Ashland Ltd.  
 OR 170-1493 3/14/2004

1.049 ac  
 p. 19-7

Charles V. Straits dba Mid-Ohio Developers  
 246-599 12/16/89

Baker Properties - Ashland Ltd.  
 OR 170-1493 3/14/2004

Charles V. Straits dba Mid-Ohio Developers  
 246-599 12/16/89

Baker Properties - Ashland Ltd.  
 OR 170-1493 3/14/2004

LET IT BE KNOWN, THIS MAP HAS BEEN PREPARED AS A REFERENCE GUIDE TO PROPERTY OWNERSHIP, AND CURRENT, HOWEVER, IT IS NOT INTENDED FOR ANY LEGAL USE, WHETHER IT BE IN SALES, TRANSFERS, TRADES, LEASES OF ANY TYPE, ETC., AND DO NOT ACCEPT RESPONSIBILITY FOR ERRORS OF ANY NATURE OR OMISSIONS CONTAINED HEREIN.

S.R. 60' 39"  
 R/W varies  
 See plans

- ◇ Loudonville Industrial Sites, plat 2-220, platted 6/18/80, Phase 1
- ☆ Larry P. Kauffman Allotment No. 1, p. 15-49, platted 2/2/95
- Larry P. Kauffman Allotment No. 2, p. 15-83, platted 4/15/80
- △ Larry P. Kauffman Allotment No. 3, p. 15-84, platted 4/16/80

LOUDONVILLE VILLAGE

T-19, R-15, Sec. 6 + T-20, R-15, Sec. 31  
 WASHINGTON TWP.

SCALE 1" = 100'

W-3A

Incorporated Loudonville Village continues to the east. See pages W-4, W-9.

(annexed 240-605 1/1/88 P.V. 13 1985)

T.H. 457  
 Old T.H. 5  
 60' R/W

Sec. 31  
 Sec. 6

577.5'

546.08'

488.07'

468.07'

468.07'

468.07'

468.07'

468.07'