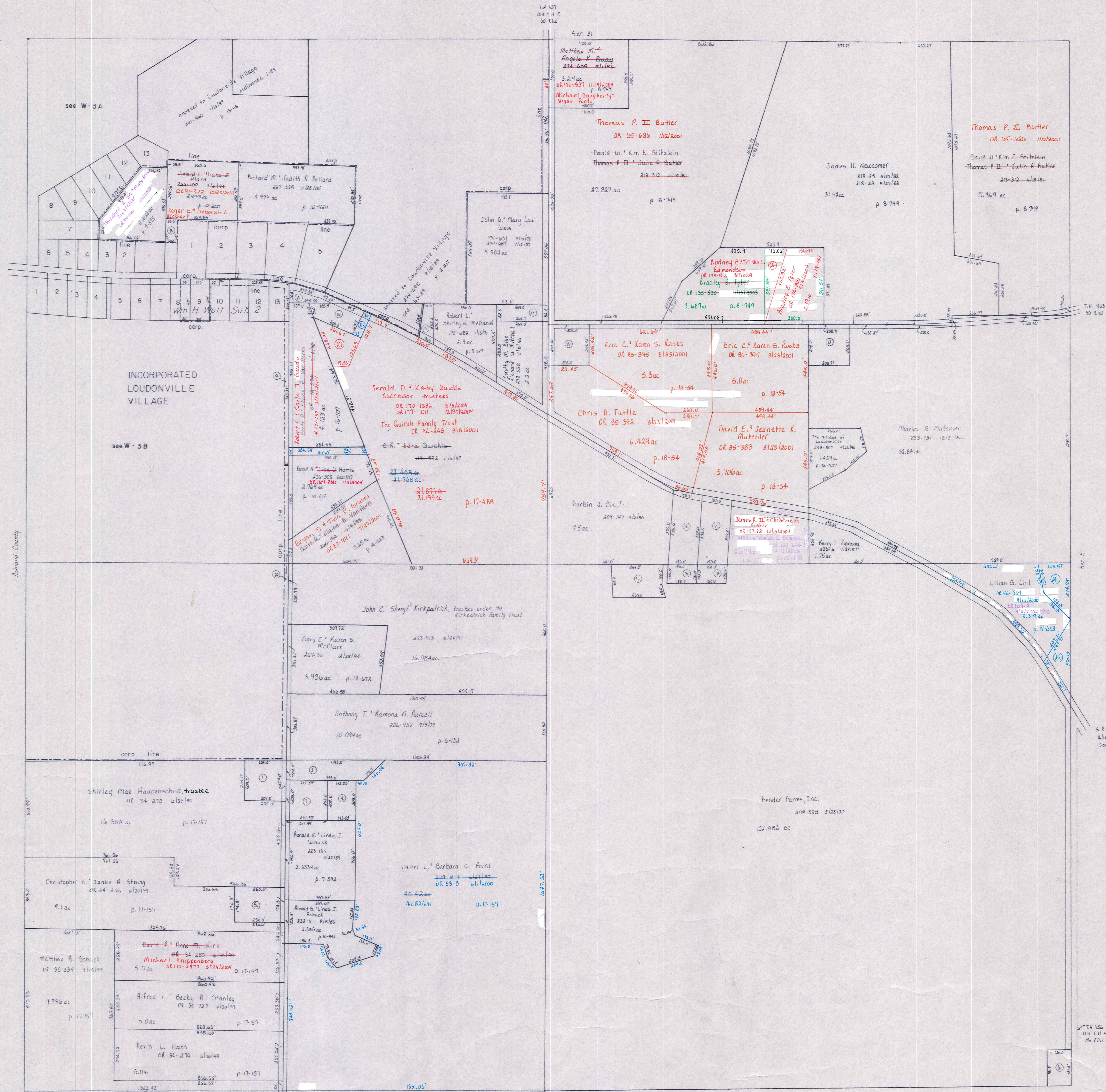


S. R. 39' 60"
R/W varies
see plans



T. 14 457
Old T. H. 5
60' R/W

Sec. 31
1430.07
852.84
577.75
230.27

see W-3 A

INCORPORATED
LOUDONVILLE
VILLAGE

see W-3 B

Rational County

S. R. 39' 60"
R/W varies
see plans

Sec. 7

- Wm. H. Wolf Subdivision #2 p. 2-178 platted 5/13/46 W-3 D
- Ed. Gerald D. & Kathryn S. Quicke 252-240-1410
- Gerald D. & Kathryn S. Quicke 252-240-1410
- Edgar E. & Barbara S. Haudenschild 252-240-1410
- The Village of Loudonville 204-408-1410
- The Village of Loudonville 204-408-1410
- The Village of Loudonville 204-408-1410

T-19, R-15, Sec. 6
WASHINGTON TWP.

SCALE: 1" = 200'

LET IT BE KNOWN, THIS MAP HAS BEEN PREPARED AS A REFERENCE GUIDE TO PROPERTY OWNERSHIP. WE BELIEVE THIS INFORMATION TO BE CORRECT AND CURRENT. HOWEVER, IT IS NOT INTENDED FOR ANY LEGAL USE, WHETHER IT BE IN SALES, TRANSFERS, TRADES, LEASES OF ANY TYPE, ETC., AND DO NOT ACCEPT RESPONSIBILITY FOR ERRORS OF ANY NATURE OR OMISSIONS CONTAINED HEREIN.

W-33