

R.15 W.

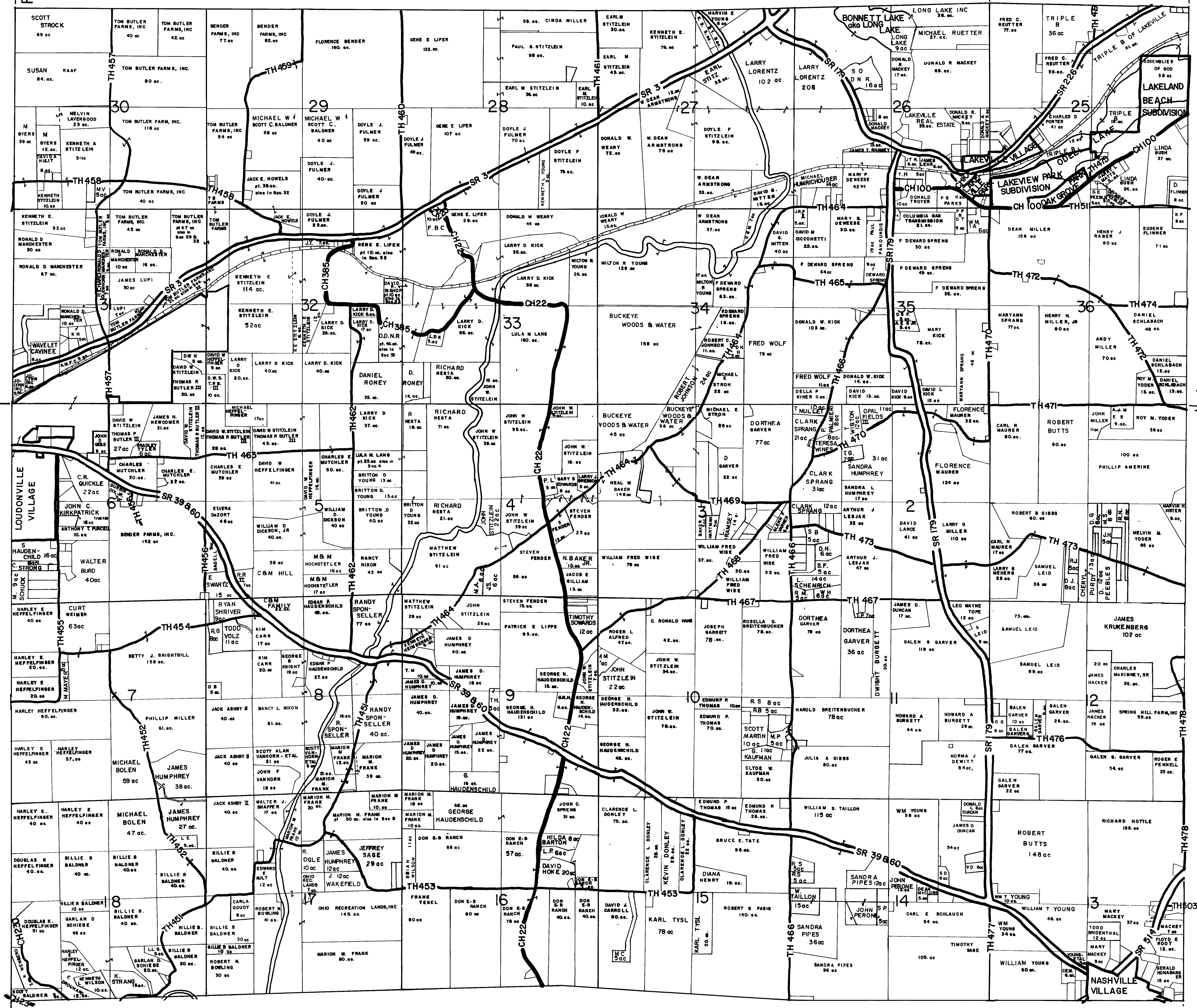
R.15 W.  
R.14 W.

ASHLAND COUNTY

T.20 N.  
T.19 N.

T.20 N.  
T.19 N.

RIPLEY TOWNSHIP



WASHINGTON TOWNSHIP  
HOLMES COUNTY, OHIO

MAY 1988

UPDATED  
12/1/95 S  
1/11/2000 SH

LET IT BE KNOWN, THIS MAP HAS BEEN PREPARED AS A REFERENCE GUIDE TO PROPERTY OWNERSHIP. WE BELIEVE THIS INFORMATION TO BE CORRECT AND CURRENT, HOWEVER, IT IS NOT INTENDED FOR ANY LEGAL USE, WHETHER IT BE IN SALES, TRANSFERS, TRADES, LEASES OF ANY TYPE, ETC., AND DO NOT ACCEPT RESPONSIBILITY FOR ERRORS OF ANY NATURE OR OMISSIONS CONTAINED HEREIN.

KNOX TOWNSHIP

R.15 W.

R.15 W.  
R.14 W.