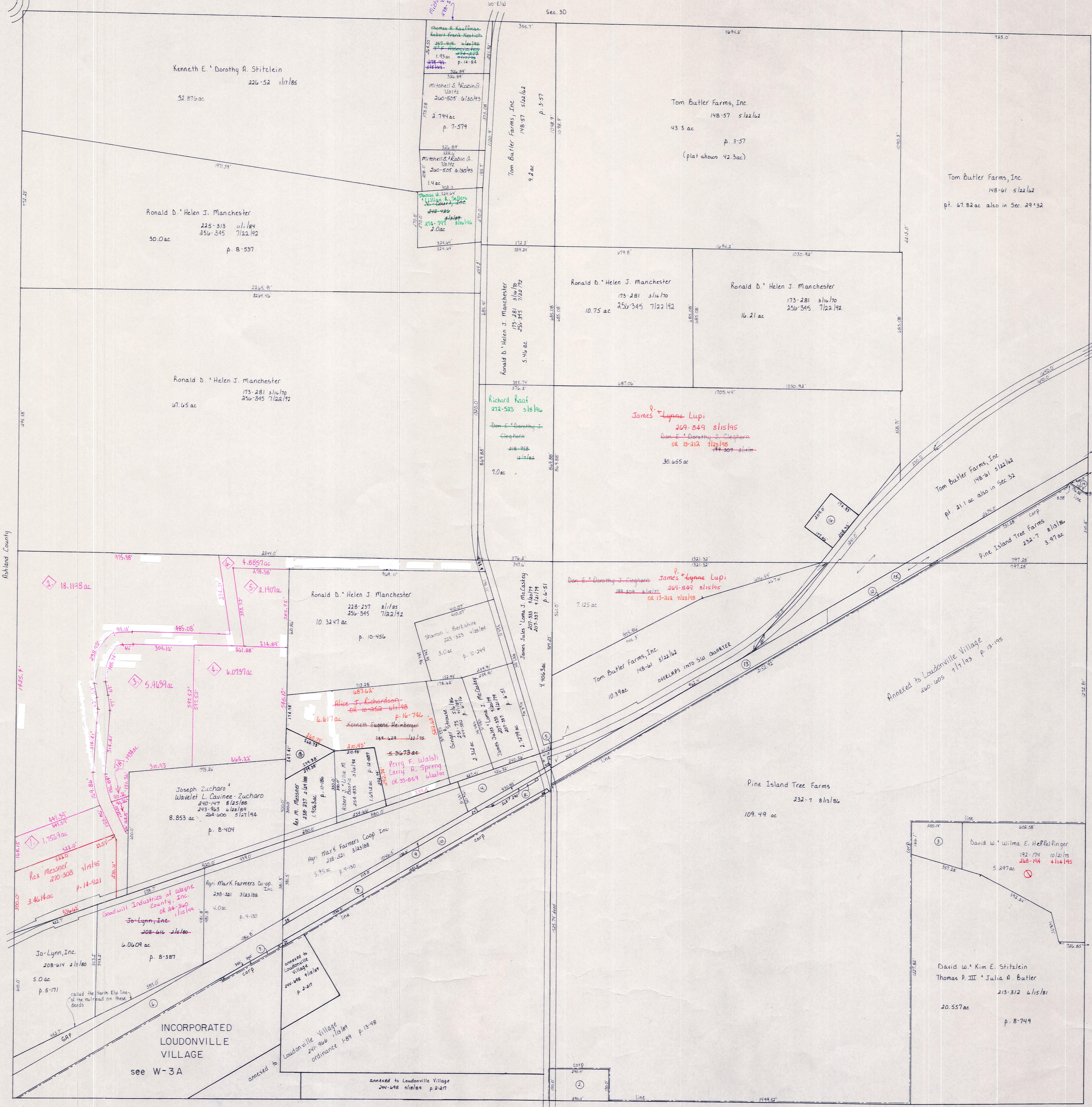


T.H. 455
Dist. W. 252
60' E.L.W.



◇ Dogwood Allotment
 PLAT 2-398 REVERTED 7/12/199
 unless otherwise noted,
 lots owned by Kenneth E. Heimberger
 205-381 411/199
 206-147 412/194

- 1.
- 2.
- 3.
- 4.
- 5.

6. Kenneth E. Shirley A. Heimberger 205-381 411/199
 206-147 412/194

T-20, R-15, Sec. 31
 WASHINGTON TWP.

SCALE: 1" = 200'

LET IT BE KNOWN, THIS MAP HAS BEEN PREPARED AS A REFERENCE GUIDE TO PROPERTY OWNERSHIP, AND CURRENT, HOWEVER, IT IS NOT INTENDED FOR ANY LEGAL USE, WHETHER IT BE IN SALES, TRANSFERS, TRADES, LEASES OF ANY TYPE, ETC., AND DO NOT ACCEPT RESPONSIBILITY FOR ERRORS OF ANY NATURE OR OMISSIONS CONTAINED HEREIN.

W-4