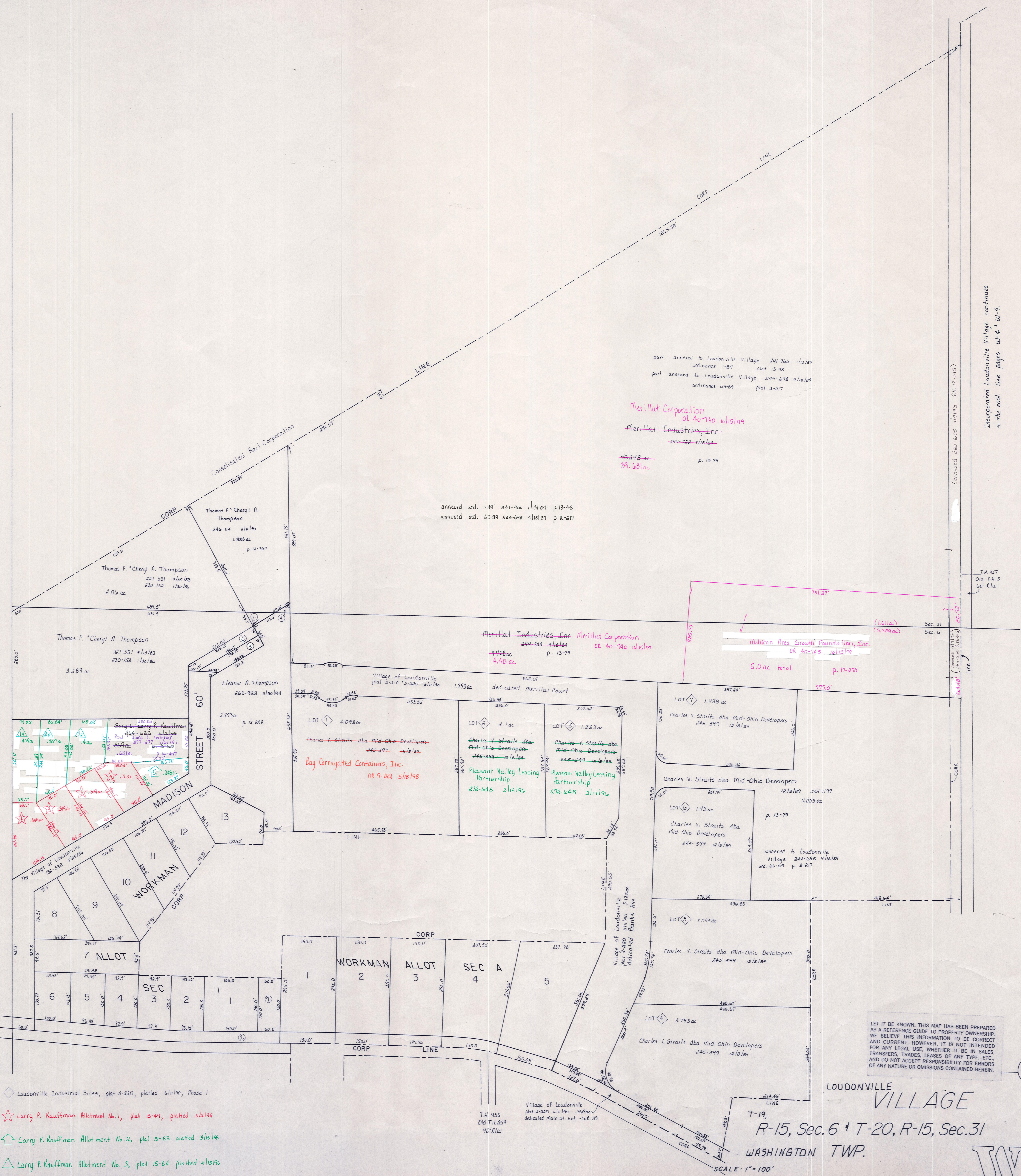


Ashtabud County



part annexed to Loudonville Village 241-266 1/13/89 ordinance 1-89 plat 13-48
 part annexed to Loudonville Village 244-698 4/18/89 ordinance 63-89 plat 2-217

Merillat Corporation
 of 40-740 1/13/89
 Merillat Industries, Inc.
 244-722-416188
 42.248 ac -
 39.681 ac
 p. 13-79

annexed ord. 1-89 241-266 1/13/89 p.13-48
 annexed ord. 63-89 244-698 4/18/89 p.2-217

Merillat Industries, Inc. Merillat Corporation
 244-722-416188
 4.718 ac
 4.48 ac
 p. 13-79

Mahan Area Growth Foundation, Inc.
 of 40-745 12/15/89
 5.0 ac total
 p. 17-278

Charles V. Straits dba Mid-Ohio Developers
 245-599 12/18/89
 Bag Corrugated Containers, Inc.
 OR 9-122 5/18/98

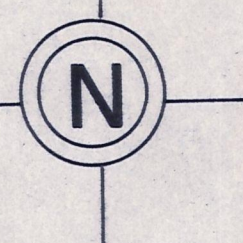
Charles V. Straits dba Mid-Ohio Developers
 245-599 12/18/89
 Pleasant Valley Leasing Partnership
 272-648 3/19/96

Charles V. Straits dba Mid-Ohio Developers
 12/18/89 245-599
 7.055 ac
 p. 13-79

Charles V. Straits dba Mid-Ohio Developers
 245-599 12/18/89

Charles V. Straits dba Mid-Ohio Developers
 245-599 12/18/89

LET IT BE KNOWN, THIS MAP HAS BEEN PREPARED AS A REFERENCE GUIDE TO PROPERTY OWNERSHIP. WE BELIEVE THIS INFORMATION TO BE CORRECT AND CURRENT, HOWEVER, IT IS NOT INTENDED FOR ANY LEGAL USE, WHETHER IT BE IN SALES, TRANSFERS, TRADES, LEASES OF ANY TYPE, ETC., AND DO NOT ACCEPT RESPONSIBILITY FOR ERRORS OF ANY NATURE OR OMISSIONS CONTAINED HEREIN.



LOUDONVILLE VILLAGE

T-19,
 R-15, Sec. 6 + T-20, R-15, Sec. 31
 WASHINGTON TWP.

SCALE: 1" = 100'

W-3A

- ◇ Loudonville Industrial Sites, plat 2-220, platted 1/11/80, Phase 1
- ☆ Larry P. Kauffman Allotment No. 1, plat 15-79, platted 3/13/85
- ⬆ Larry P. Kauffman Allotment No. 2, plat 15-83, platted 4/15/86
- △ Larry P. Kauffman Allotment No. 3, plat 15-84, platted 4/15/86

Incorporated Loudonville Village continues to the east. See pages W-4, W-9.

(annexed 240-605 7/1/83 R.V. 13-115)

T.H. 457
 Old T.H. 5
 40' R/W

Sec. 31
 Sec. 6

(16.11 ac)
 (5.384 ac)

775.0'

387.84'

245-599

12/18/89

245-599

12/18/89

245-599

12/18/89

245-599

12/18/89

245-599

12/18/89

245-599

12/18/89

245-599

12/18/89

245-599

12/18/89

245-599

12/18/89