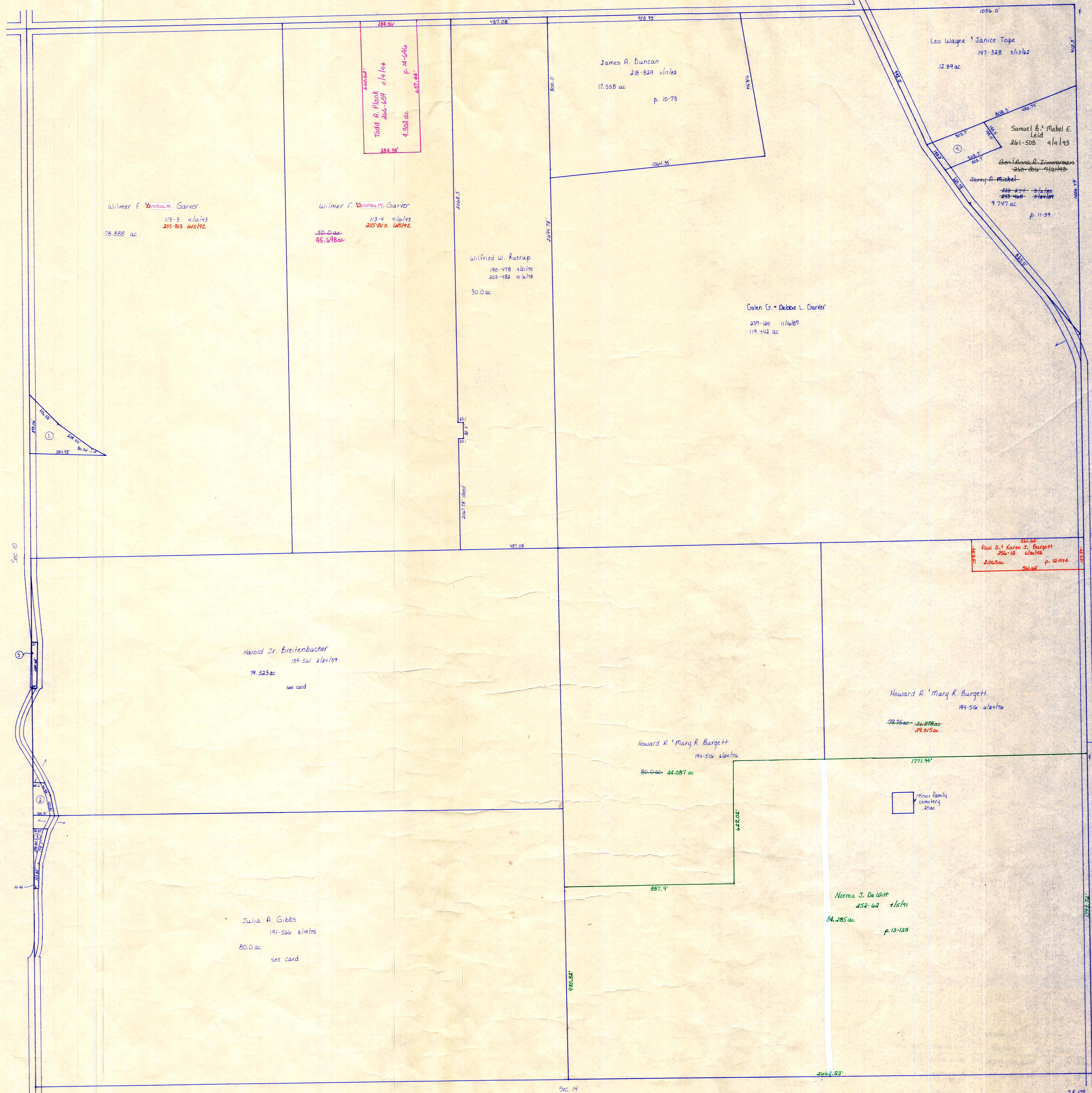


T. 14 466
Old T. 14 271
W. 30 R. 15

Sec. 11

S. R. 179



- ① Wilmer & Dorthea M. Garver 210.71 2/18/1882 112ac
- ② David & Corine Rose 211.50 2/18/1882 112ac p. 8502
- ③ Etta W. Kaufman 187.80 2/18/1882 84ac p. 2985 see card
- ④ Lea Wayne & Janice Tope 12.89 2/18/1882 10ac
- ⑤ William Breitenbucher 225.69 2/18/1882 118ac p. 10-26

for numbered parcels see folder

T-19, R-15, Sec. 11
WASHINGTON TWP.
SCALE: 1" = 200'

LET IT BE KNOWN, THIS MAP HAS BEEN PREPARED AS A REFERENCE GUIDE TO PROPERTY OWNERSHIP. WE BELIEVE THIS INFORMATION TO BE CORRECT AND CURRENT, HOWEVER, IT IS NOT INTENDED FOR ANY LEGAL USE, WHETHER IT BE IN SALES, TRANSFERS, TRADES, LEASES, OF ANY TYPE, ETC., AND DO NOT ACCEPT RESPONSIBILITY FOR ERRORS OF ANY NATURE OR OMISSIONS CONTAINED HEREIN.

W-22