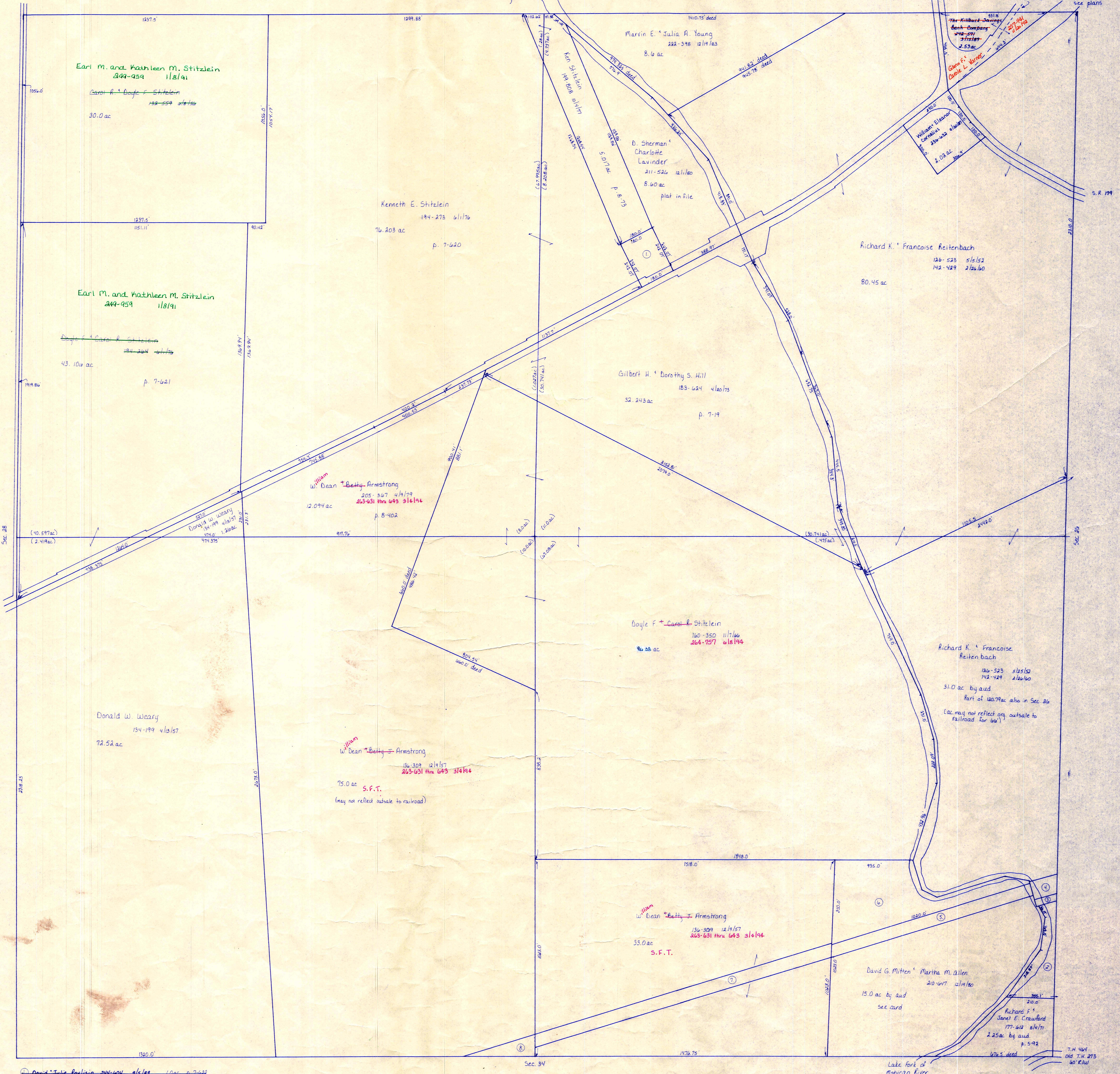


T.H. 461  
Old T.H. 382  
30' E.W.



- ① David & Julie Pavlison 244-604 8/6/88 10 ac p. 7-622
- ② Howard & Karen & Michael & Annemarie 203-300 8/27/87 1.3 ac p. 12-250
- ③ Consolidated Rail Corporation 203-456 9/23/78 p. 1281; also in Sec. 26
- ④ Railroad (see card)
- ⑤ Railroad (see card)
- ⑥ Consolidated Rail Corporation 203-456 8/14/78 3.75 ac
- ⑦ Railroad (see card)
- ⑧ Railroad (see card)

For numbered parcels, see folder

T-20, R-15, Sec. 27  
WASHINGTON TWP.  
SCALE: 1" = 200'

LET IT BE KNOWN, THIS MAP HAS BEEN PREPARED AS A REFERENCE GUIDE TO PROPERTY OWNERSHIP, AND CURRENT, HOWEVER, IT IS NOT INTENDED FOR ANY LEGAL USE, WHETHER IT BE IN SALES, TRANSFERS, TRAILS, LEASES OF ANY TYPE, ETC., AND DO NOT ACCEPT RESPONSIBILITY FOR THE ACCURACY OF ANY NATURE OR OMISSIONS CONTAINED HEREIN.

W-20