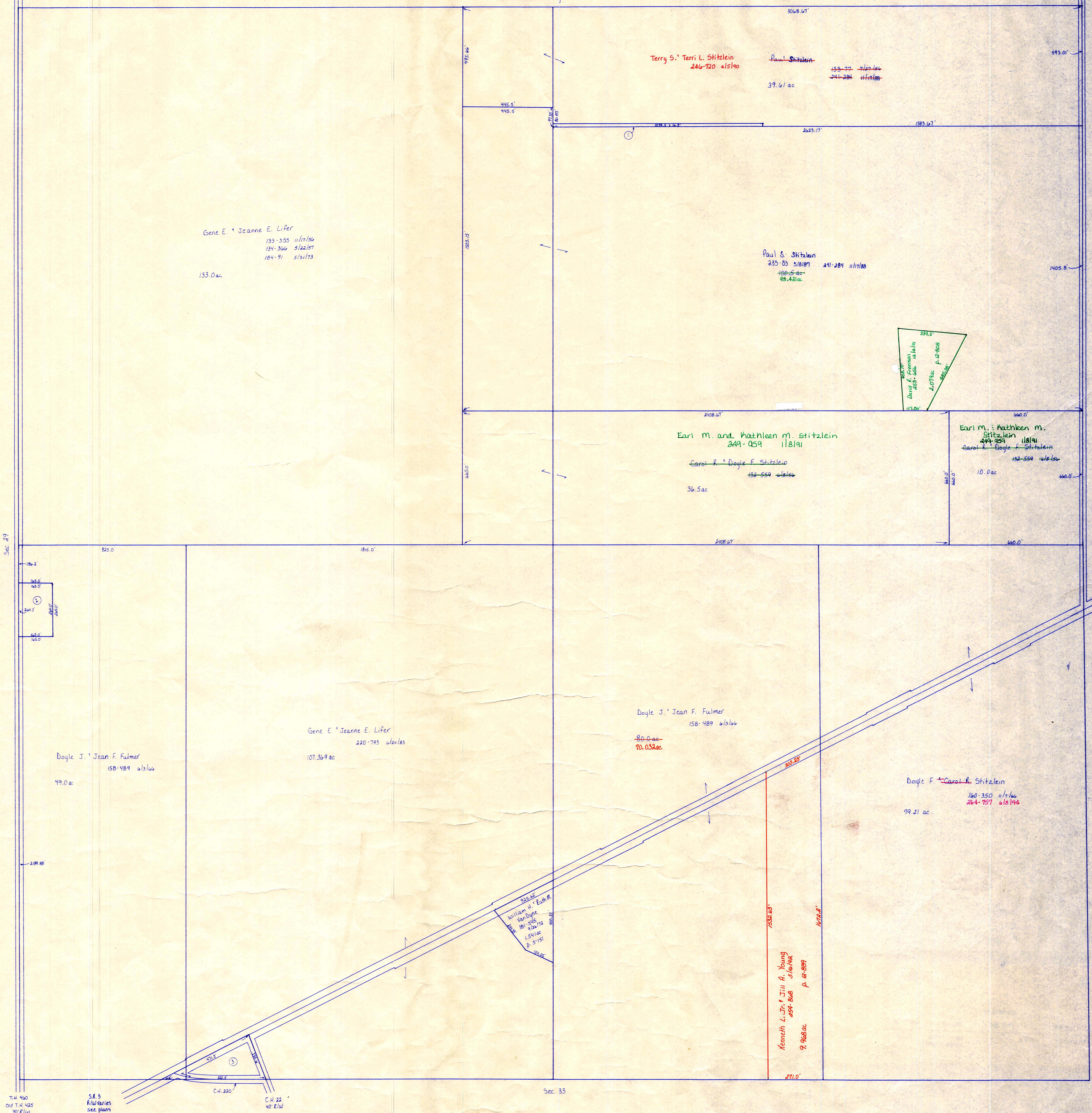


T.H. 440
Old T.H. 425
40' E/W

T.H. 461
Old T.H. 382
30' E/W

Ashland County



- ① Paul S. Skitzlein 241-284 n/w/80 39 ac 235-83 s/w/87
- ② Doyle J. & Jean F. Fulmer 158-489 s/w/80 1.0 ac
- ③ Bible Baptist Church of Loudonville 221-59 n/w/83 1.0 ac plat in file

for numbered parcels see folder

T-20, R-15, Sec. 28
WASHINGTON TWP.

SCALE: 1" = 200'

LET IT BE KNOWN, THIS MAP HAS BEEN PREPARED AS A REFERENCE GUIDE TO PROPERTY OWNERSHIP. WE BELIEVE THIS INFORMATION TO BE CORRECT AND CURRENT, HOWEVER, IT IS NOT INTENDED FOR ANY LEGAL USE, WHETHER IT BE IN SALES, TRANSFERS, TRADES, LEASES OF ANY TYPE, ETC., AND DO NOT ACCEPT RESPONSIBILITY FOR ERRORS OF ANY NATURE OR OMISSIONS CONTAINED HEREIN.

W-15