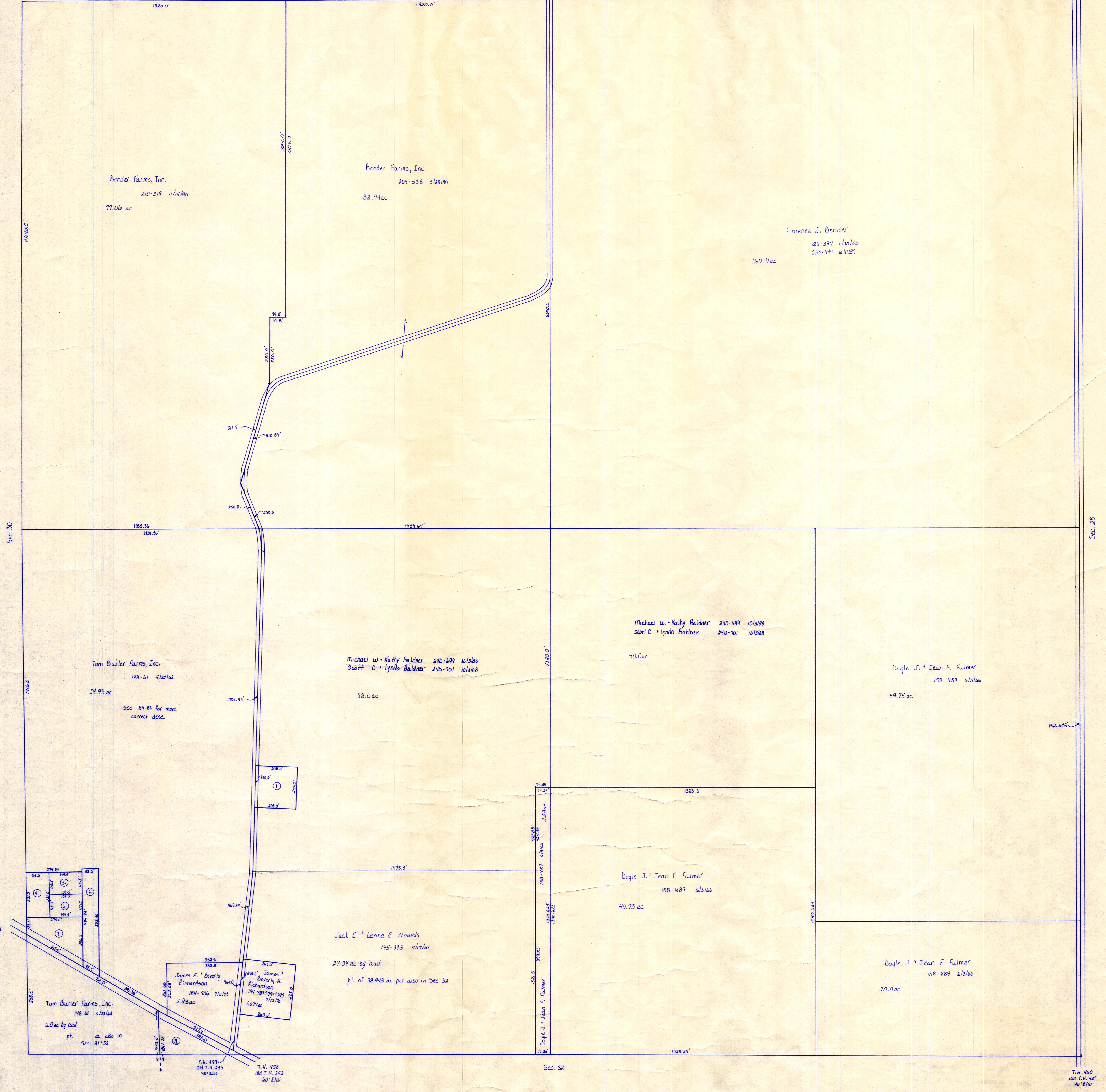


T.H. 459
Old T.H. 253
30' E.W.

T.H. 460
Old T.H. 425
40' E.W.

Ashland County



- ① Michael W. & Kathy J. Baldwin 240-689 10/13/88 160 ac p. 527
- ② Rainbow Valley Baptist Church 230-687 5/1/86 97 ac
- ③ Kenneth E. & Dorothy H. White 214-689 8/13/81 103 ac
- ④ Washington Township Trustees 230-689 1/12/81
- ⑤ Board of Cemetery Trustees 230-689 1/12/81
- ⑥ Board of Cemetery Trustees 230-689 1/12/81
- ⑦ Trustees of the Lutheran Baptist Church aka Plum Run Cemetery 29-516 2/1/81 112 ac
- ⑧ Washington Township Trustees 230-689 1/12/81
- ⑨ Trustees of the Lutheran Baptist Church aka Plum Run Cemetery 29-516 2/1/81 112 ac
- ⑩ Washington Township Trustees 230-689 1/12/81
- ⑪ Trustees of the Lutheran Baptist Church aka Plum Run Cemetery 29-516 2/1/81 112 ac

for numbered parcels, see folder

T-20, R-15, Sec. 29
WASHINGTON TWP.
SCALE: 1"=200'

LET IT BE KNOWN, THIS MAP HAS BEEN PREPARED AS A REFERENCE GUIDE TO PROPERTY OWNERSHIP. WE BELIEVE THIS INFORMATION TO BE CORRECT AND CURRENT. HOWEVER, IT IS NOT INTENDED FOR ANY LEGAL USE, WHETHER IT BE IN SALES, TRANSFERS, TRADES, LEASES OF ANY TYPE, ETC., AND DO NOT ACCEPT RESPONSIBILITY FOR ERRORS OF ANY NATURE OR OMISSIONS CONTAINED HEREIN.

W-10