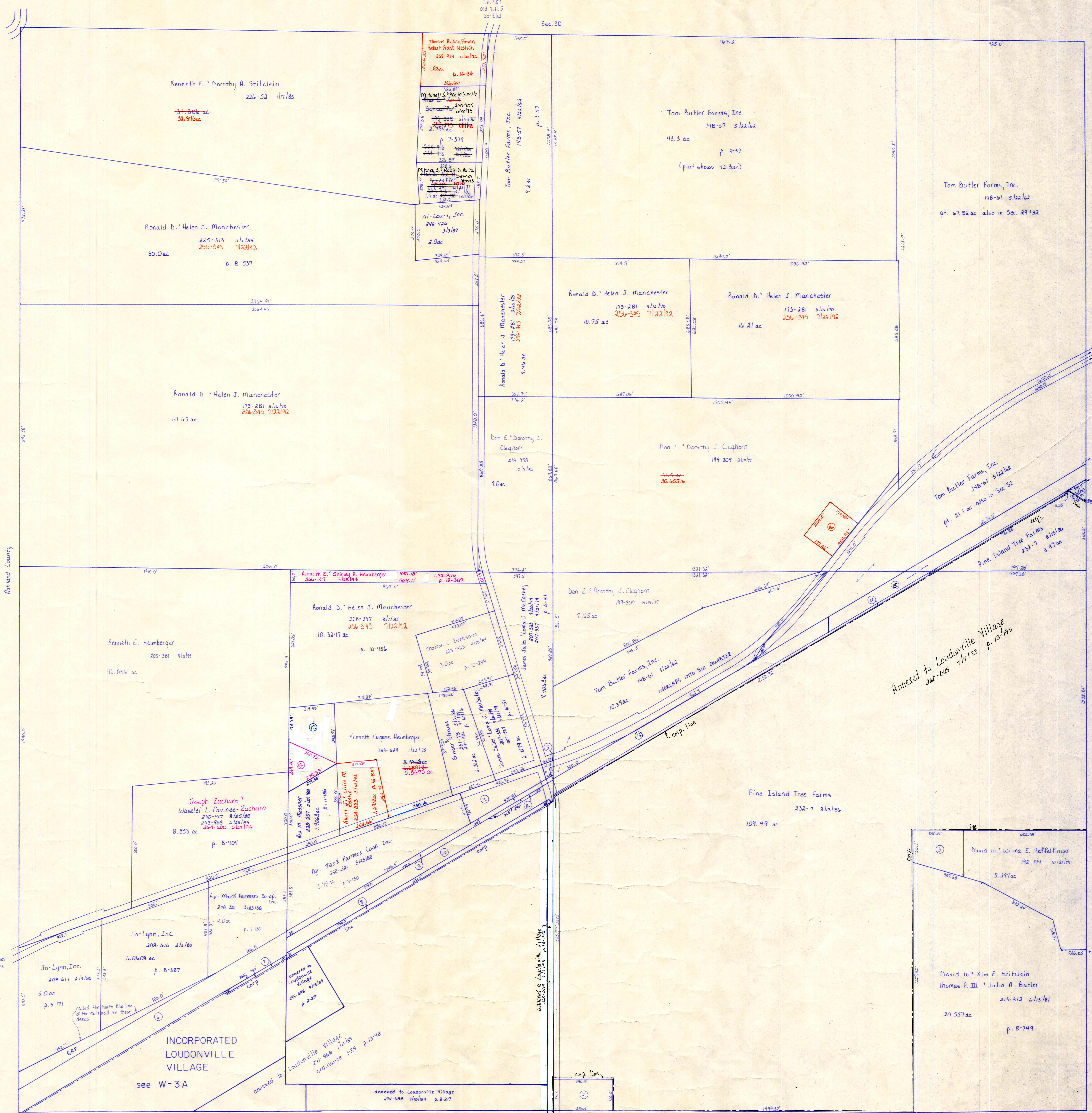


T.H. 455
Old T.H. 5
80' C.W.

Sec. 30



- ① Mineral Industries, Inc. 204-722 4/16/81 1.0000 ac p. 2-29
- ② John M. Butler 204-353 3/12/87 1.0 ac
- ③ David W. & Wilma E. Heffelfinger 192-174 10/21/75 1.156 ac
- ④ James Jules & Loma J. McCaskey 207-333 4/10/79 207-337 4/10/79 1.1275 ac p. 6-57
- ⑤ Britton D. II & Nancy F. Young 192-57 10/1/75 1.024 ac p. 7-519
- ⑥ Railroad - see card
- ⑦ Consolidated Rail Corporation 203-456 4/24/78 1.2 ac
- ⑧ Consolidated Rail Corporation 203-456 4/24/78 1.88 ac
- ⑨ Consolidated Rail Corporation 203-456 4/24/78 1.02 ac
- ⑩ Consolidated Rail Corporation 203-456 4/24/78
- ⑪ Consolidated Rail Corporation 203-456 4/24/78 1.004 ac
- ⑫ Railroad - see card

for numbered parcels, see folder

T-20, R-15, Sec. 31
WASHINGTON TWP.
SCALE: 1"=200'

LET IT BE KNOWN, THIS MAP HAS BEEN PREPARED AS A REFERENCE GUIDE TO PROPERTY OWNERSHIP, AND CURRENT, HOWEVER, IT IS NOT INTENDED FOR ANY LEGAL USE, WHETHER IT BE IN SALES, TRANSFERS, TRAILS, LEASES OF ANY TYPE, ETC., AND DO NOT ACCEPT RESPONSIBILITY FOR ERRORS OF ANY NATURE OR OMISSIONS CONTAINED HEREIN.

W-41