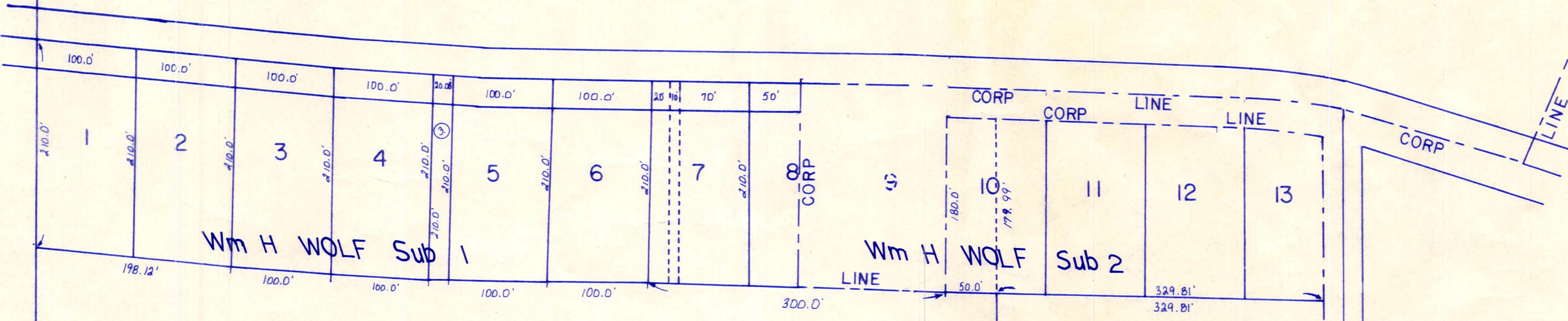
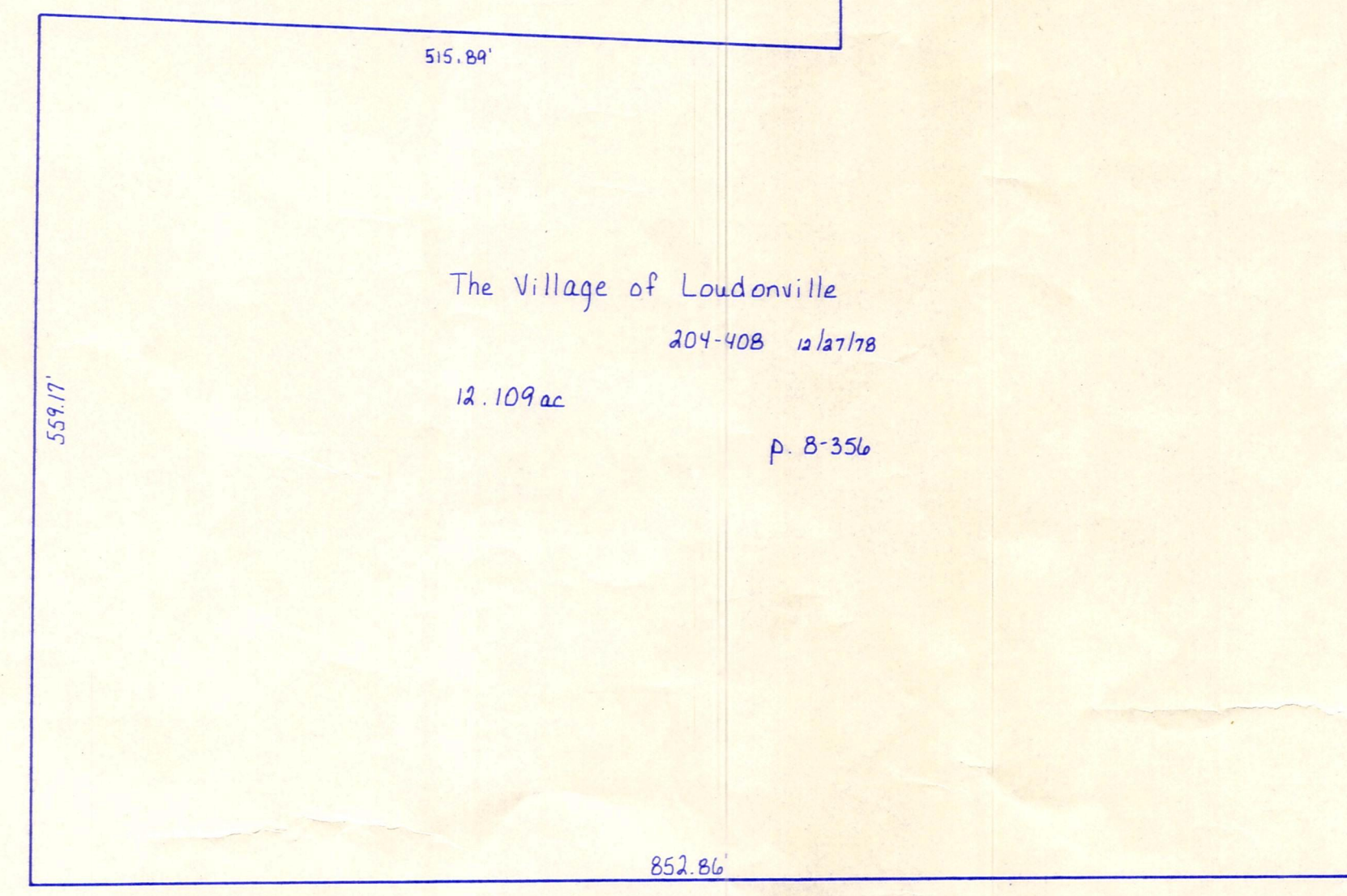


S. R. 60' 59"
Elev varies
See plans



S. R. 60' 59"
Elev varies
See plans

Ashland County
2300.12



Edgar P. Barbara J. Haudenschild
202-238 1/2 1/2 ac
55.491 ac
p. 6-132

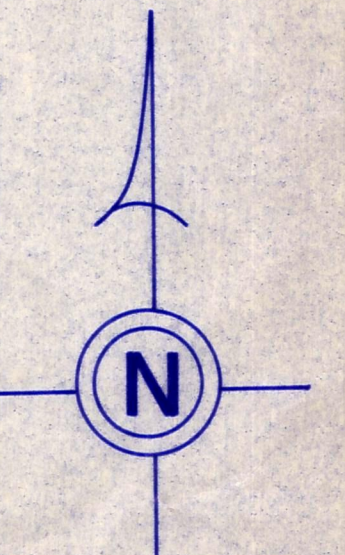
NW 1/4
SW 1/4

NW 1/4
SW 1/4

CORP LINE 1311.02'

T.H. 455
Old T.H. 259
40' E/W

LET IT BE KNOWN, THIS MAP HAS BEEN PREPARED AS A REFERENCE GUIDE TO PROPERTY OWNERSHIP. WE BELIEVE THIS INFORMATION TO BE CORRECT AND CURRENT, HOWEVER, IT IS NOT INTENDED FOR ANY LEGAL USE, WHETHER IT BE IN SALES, TRANSFERS, TRADES, LEASES OF ANY TYPE, ETC., AND DO NOT ACCEPT RESPONSIBILITY FOR ERRORS OF ANY NATURE OR OMISSIONS CONTAINED HEREIN.



incorporated
LOUDONVILLE VILLAGE

T-19, R-15, Sec. 6
WASHINGTON TWP.

SCALE: 1" = 100'

W-313