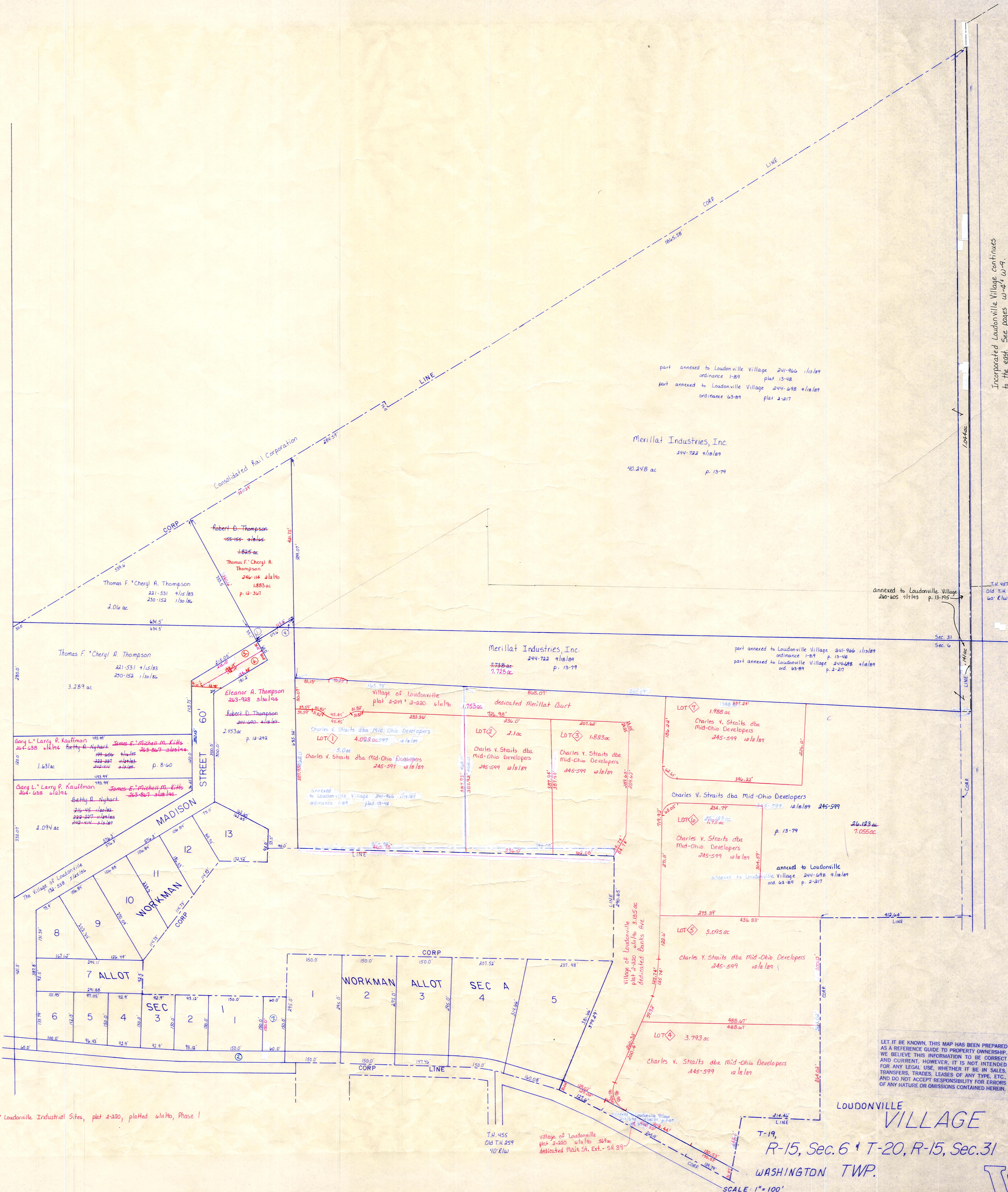


Ashland County



Incorporated Loudonville Village continues to the east. See pages W-24, W-29.

annexed to Loudonville Village 240-605 1/18/89 p. 13-195

part annexed to Loudonville Village 241-926 1/13/89 ordinance 1-89 plat 13-48
part annexed to Loudonville Village 244-478 1/18/89 ordinance 63-89 plat 2-217

Merrillat Industries, Inc.
244-722 1/18/89
40.248 ac p. 13-79

Robert D. Thompson
155-155-21610
1.825 ac
Thomas F. Cheryl A. Thompson
246-116 2/21/86
1.883 ac p. 12-367
Thomas F. Cheryl A. Thompson
221-531 1/15/83
250-152 1/15/86
2.016 ac

Thomas F. Cheryl A. Thompson
421-531 1/15/83
250-152 1/15/86
3.289 ac

Gary L. Larry P. Kauffman
266-638 1/16/84
1.631 ac
James E. Mitchell M. Kitts
263-267 2/18/84
1.631 ac p. 8-60

Gary L. Larry P. Kauffman
266-638 1/16/84
2.094 ac
James E. Mitchell M. Kitts
263-267 2/18/84
2.094 ac

Elleanor A. Thompson
263-928 3/16/84
2.953 ac p. 12-292
Robert D. Thompson
266-620 2/18/84

Village of Loudonville
plat 2-219 2-220 1/11/86
1.753 ac
dedicated Merrillat Court
106.98'
230.0'
207.62'

Charles V. Straits dba Mid-Ohio Developers
LOT 1 4.098 ac 12/18/89
Charles V. Straits dba Mid-Ohio Developers
245-599 12/18/89
LOT 2 2.1 ac
Charles V. Straits dba Mid-Ohio Developers
245-599 12/18/89
LOT 3 1.883 ac
Charles V. Straits dba Mid-Ohio Developers
245-599 12/18/89

LOT 4 1.988 ac
Charles V. Straits dba Mid-Ohio Developers
245-599 12/18/89

Charles V. Straits dba Mid-Ohio Developers
245-599 12/18/89
LOT 5 3.095 ac
Charles V. Straits dba Mid-Ohio Developers
245-599 12/18/89

Charles V. Straits dba Mid-Ohio Developers
245-599 12/18/89
LOT 6 3.793 ac
Charles V. Straits dba Mid-Ohio Developers
245-599 12/18/89

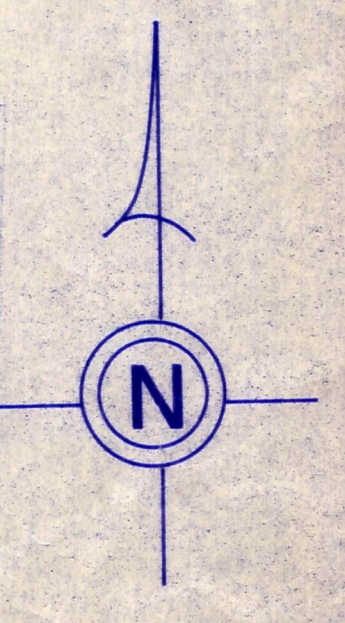
annexed to Loudonville
annexed to Loudonville Village 241-926 1/13/89
ord. 63-89 p. 2-217

26.123 ac
1.055 ac

S.R. 60139
Elev varies
See plans

◇ Loudonville Industrial Sites, plat 2-220, platted 1/11/86, Phase I

LET IT BE KNOWN, THIS MAP HAS BEEN PREPARED AS A REFERENCE GUIDE TO PROPERTY OWNERSHIP, AND CURRENT, HOWEVER, IT IS NOT INTENDED FOR ANY LEGAL USE, WHETHER IT BE IN SALES, TRANSFERS, TRUSTS, LEASES OF ANY TYPE, ETC., AND DO NOT ACCEPT RESPONSIBILITY FOR ERRORS OF ANY NATURE OR OMISSIONS CONTAINED HEREIN.



LOUDONVILLE VILLAGE

T-19,
R-15, Sec. 6 + T-20, R-15, Sec. 31
WASHINGTON TWP.

SCALE: 1" = 100'

W-3A