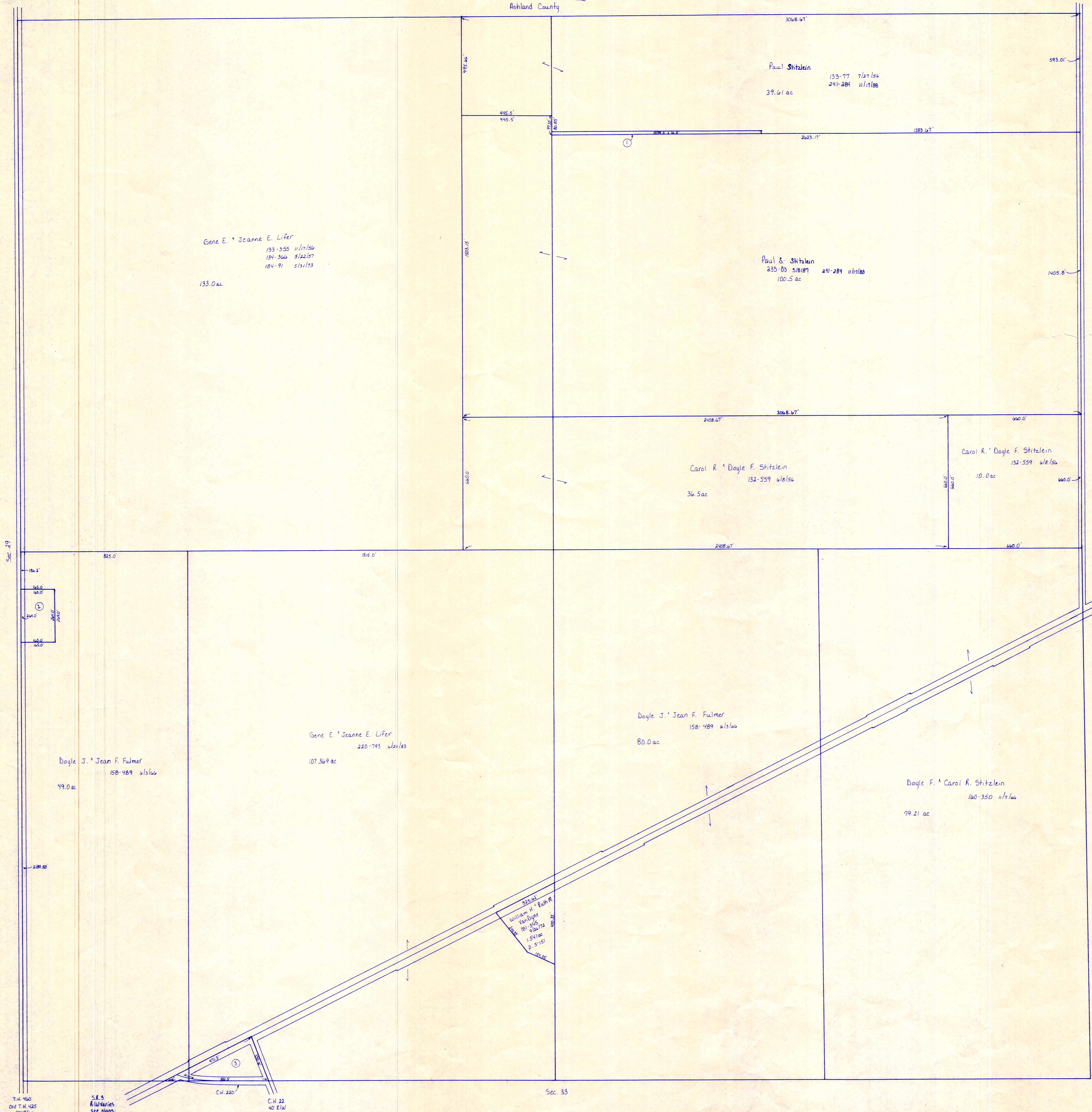


T.H. 460
Old T.H. 425
40' E/W

T.H. 461
Old T.H. 382
30' E/W

Rohland County



Gene E. & Jeanne E. Lifer
 133-355 11/17/56
 134-366 5/22/57
 134-91 5/31/73
 133.0 ac

Paul S. Stitzlein
 133-77 7/27/56
 241-281 11/1/88
 39.61 ac

Paul S. Stitzlein
 235-83 5/18/87
 241-281 11/1/88
 100.5 ac

Carol R. & Doyle F. Stitzlein
 132-559 6/15/56
 36.5 ac

Carol R. & Doyle F. Stitzlein
 132-559 6/15/56
 10.0 ac

Doyle J. & Jean F. Fulmer
 158-489 6/15/56
 80.0 ac

Gene E. & Jeanne E. Lifer
 220-795 6/15/56
 107.369 ac

Doyle J. & Jean F. Fulmer
 158-489 6/15/56
 49.0 ac

Doyle F. & Carol R. Stitzlein
 160-350 11/1/56
 79.21 ac

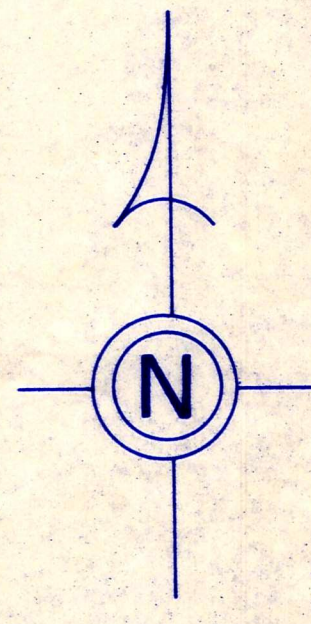
T.H. 460
Old T.H. 425
40' E/W

S.R. 5
R/W varies
see plans

Ch. 22
40' E/W

Sec. 35

S.R. 3
R/W varies
see plans



- ① Paul S. Stitzlein 241-281 11/1/88 .39 ac 235-83 5/18/87
- ② Doyle J. & Jean F. Fulmer 158-489 6/15/56 1.0 ac
- ③ Bible Baptist Church of Loudonville 221-99 7/22/83 1.09 ac plat in file

T-20, R-15, Sec. 28
 WASHINGTON TWP.

SCALE: 1" = 200'

LET IT BE KNOWN, THIS MAP HAS BEEN PREPARED AS A REFERENCE GUIDE TO PROPERTY OWNERSHIP. WE BELIEVE THIS INFORMATION TO BE CORRECT AND CURRENT, HOWEVER, IT IS NOT INTENDED FOR ANY LEGAL USE, WHETHER IT BE IN SALES, TRANSFERS, TRADES, LEASES OF ANY TYPE, ETC., AND DO NOT ACCEPT RESPONSIBILITY FOR ERRORS OF ANY NATURE OR OMISSIONS CONTAINED HEREIN.

W-15