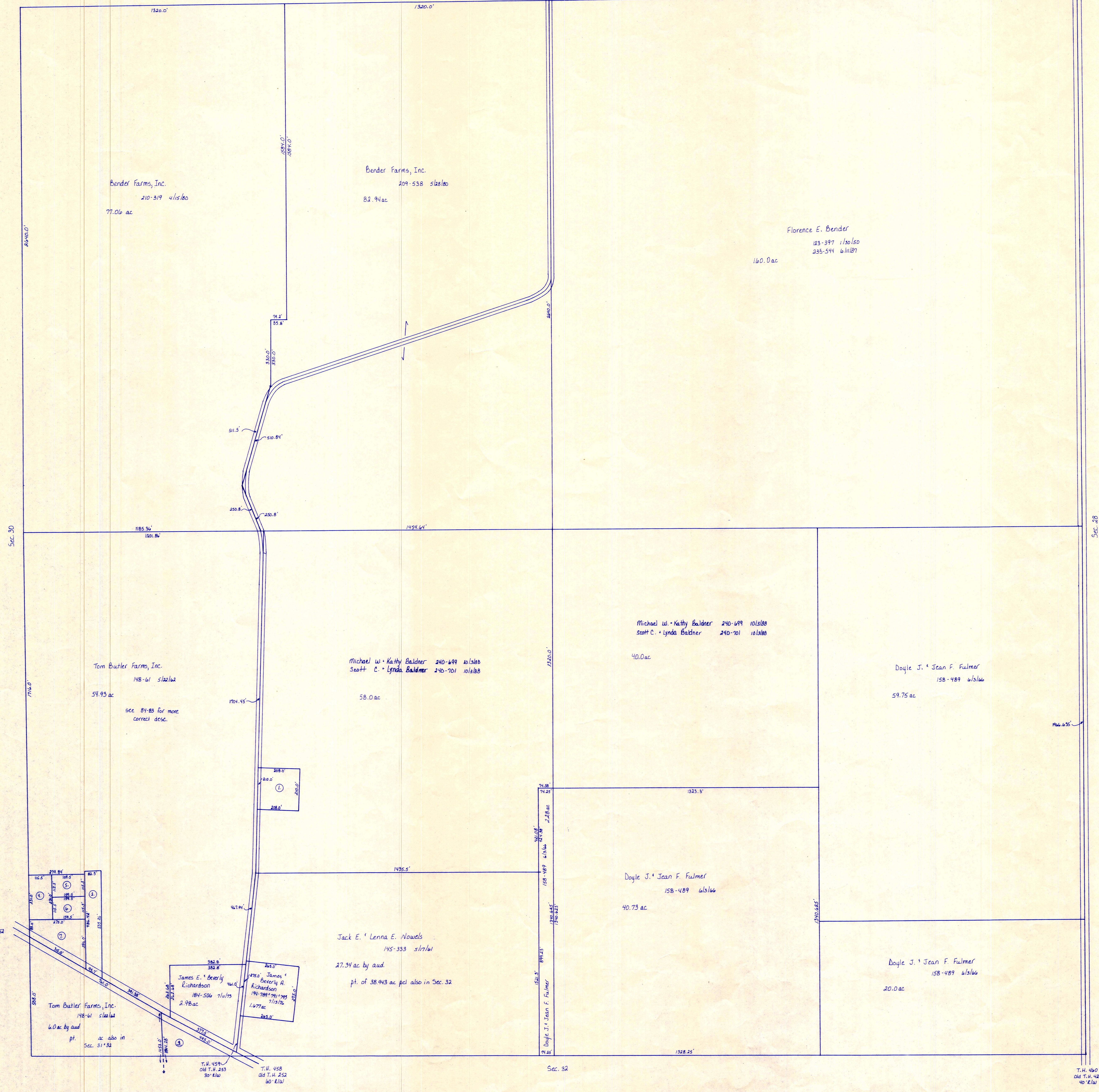


Ashland County

T.H. 460  
Old T.H. 425  
60' E.W.



- ① Michael W. & Kathy Jo Baldwin 200-080 1/23/77 1.0 ac p. 8-127
- ② Rainbow Valley Baptist Church 230-697 3/6/66 .97 ac
- ③ Kenneth E. & Dorothy R. Stitzlein 214-629 9/23/81 1.03 ac
- ④ Trustees of the German Baptist Church aka Plum Run Cemetery 39-516 12/6/87 1.63 ac
- ⑤ Trustees of the German Baptist Church aka Plum Run Cemetery 39-516 12/6/87 .42 ac
- ⑥ Trustees of the German Baptist Church aka Plum Run Cemetery 39-516 12/6/87 .42 ac
- ⑦ Washington Twp Trustees Garage location 1.007 ac see 39-516 for desc.

T-20, R-15, Sec. 29  
 WASHINGTON TWP.  
 SCALE: 1"=200'

LET IT BE KNOWN, THIS MAP HAS BEEN PREPARED AS A REFERENCE GUIDE TO PROPERTY OWNERSHIP. WE BELIEVE THIS INFORMATION TO BE CORRECT AND CURRENT, HOWEVER, IT IS NOT INTENDED FOR ANY LEGAL USE, WHETHER IT BE IN SALES, TRANSFERS, TRADES, LEASES OF ANY TYPE, ETC., AND DO NOT ACCEPT RESPONSIBILITY FOR ERRORS OF ANY NATURE OR OMISSIONS CONTAINED HEREIN.

W-10