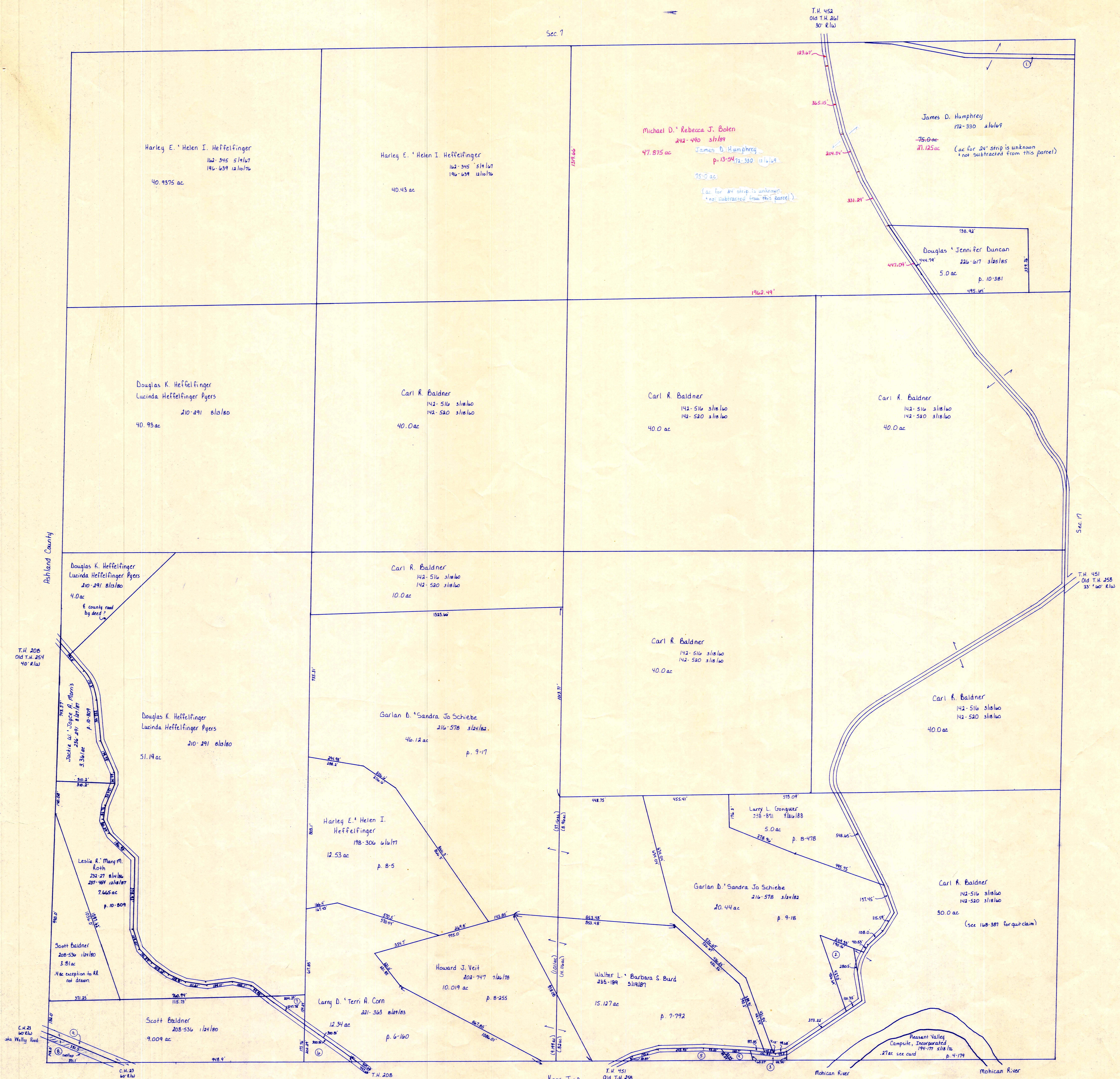


Sec. 1



- ① Jack Ashby III 231-526 ulm/16 24' strip
- ② Theresa Zimmerman 186-663 316/14 1.0 ac p. 7-217
- ③ Robert Gougner - Robert P. Schaffner 231-864 116/18
- ④ Larry Rogers 200-461 118/18 p. 8-176
- ⑤ Robert Gougner - Richard P. Schaffner 231-864 116/18
- ⑥ Larry Rogers 200-461 118/18 .188 ac p. 8-214
- ⑦ Howard J. Veit 202-747 716/78 .696 ac p. 8-256
- ⑧ Norma M. Baker - Wanda J. Van Horn 236-202 .66 ac p. 8-357
- ⑨ Mickey Zody 262-256 121/183 .36 ac p. 10-217
- ⑩ Clement E. Theresa E. Saffner 214-28 116/18
- ⑪ Harry J. Frances Elizabeth Munko 233-498 121/186 .63 ac p. 10-255
- ⑫ County of Holmes 113-507 312/16 22.39 ac total in Knox and Washington Twp.

T-19, R-15, Sec. 18
 WASHINGTON TWP.
 SCALE: 1"=200'

LET IT BE KNOWN, THIS MAP HAS BEEN PREPARED AS A REFERENCE GUIDE TO PROPERTY OWNERSHIP. WE BELIEVE THIS INFORMATION TO BE CORRECT AND CURRENT, HOWEVER, IT IS NOT INTENDED FOR ANY LEGAL USE, WHETHER IT BE IN SALES, TRANSFERS, TRADES, LEASES OF ANY TYPE, ETC., AND DO NOT ACCEPT RESPONSIBILITY FOR ERRORS OF ANY NATURE OR OMISSIONS CONTAINED HEREIN.

W-1