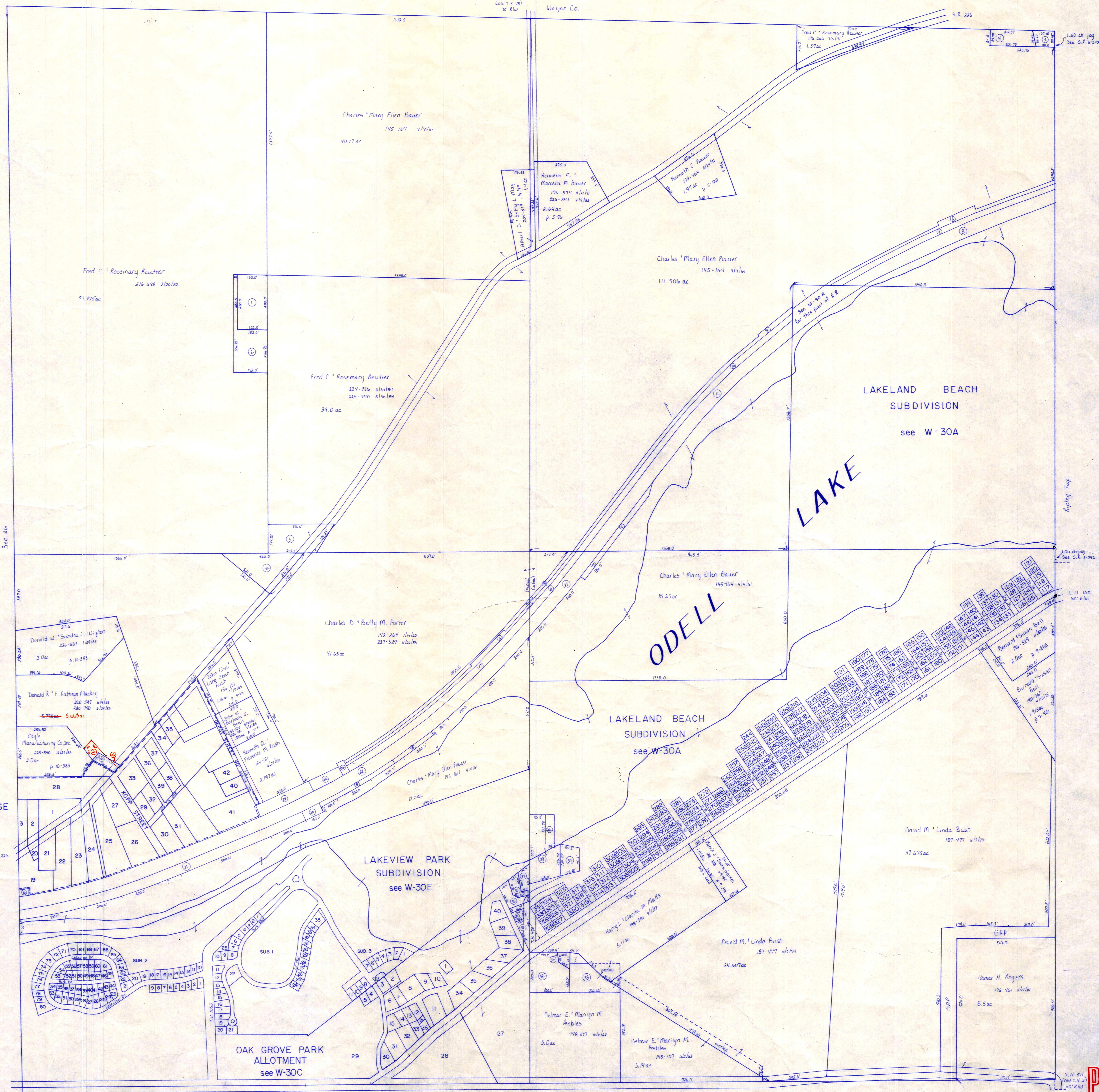


T. 20, R. 15, Sec. 25  
Wayne Co.



- ① Michael D. Reutter 215-705 1/21/16 217-6 1/21/16 1/21/16 1/21/16
- ② Michael D. Reutter 215-707 1/21/16 217-6 1/21/16 1/21/16 1/21/16
- ③ Mary Brown Davenport 183-118 1/21/16 223-243 1/21/16 1/21/16
- ④ Harry + Mary Jones 241-518 1/21/16 1/21/16 1/21/16
- ⑤ Harry + Mary Jones 241-518 1/21/16 1/21/16 1/21/16
- ⑥ Consolidated Rail Corporation 203-456 1/21/16 1/21/16
- ⑦ Consolidated Rail Corporation 203-456 1/21/16 1/21/16
- ⑧ Consolidated Rail Corporation 203-456 1/21/16 1/21/16
- ⑨ Consolidated Rail Corporation 203-456 1/21/16 1/21/16
- ⑩ Consolidated Rail Corporation 203-456 1/21/16 1/21/16
- ⑪ Consolidated Rail Corporation 203-456 1/21/16 1/21/16
- ⑫ Consolidated Rail Corporation 203-456 1/21/16 1/21/16
- ⑬ Consolidated Rail Corporation 203-456 1/21/16 1/21/16
- ⑭ Consolidated Rail Corporation 203-456 1/21/16 1/21/16
- ⑮ Consolidated Rail Corporation 203-456 1/21/16 1/21/16
- ⑯ Consolidated Rail Corporation 203-456 1/21/16 1/21/16
- ⑰ Consolidated Rail Corporation 203-456 1/21/16 1/21/16
- ⑱ Consolidated Rail Corporation 203-456 1/21/16 1/21/16
- ⑲ Consolidated Rail Corporation 203-456 1/21/16 1/21/16
- ⑳ Consolidated Rail Corporation 203-456 1/21/16 1/21/16
- ㉑ Consolidated Rail Corporation 203-456 1/21/16 1/21/16
- ㉒ Consolidated Rail Corporation 203-456 1/21/16 1/21/16
- ㉓ Consolidated Rail Corporation 203-456 1/21/16 1/21/16
- ㉔ Consolidated Rail Corporation 203-456 1/21/16 1/21/16
- ㉕ Consolidated Rail Corporation 203-456 1/21/16 1/21/16
- ㉖ Consolidated Rail Corporation 203-456 1/21/16 1/21/16
- ㉗ Consolidated Rail Corporation 203-456 1/21/16 1/21/16
- ㉘ Consolidated Rail Corporation 203-456 1/21/16 1/21/16
- ㉙ Consolidated Rail Corporation 203-456 1/21/16 1/21/16
- ㉚ Consolidated Rail Corporation 203-456 1/21/16 1/21/16
- ㉛ Consolidated Rail Corporation 203-456 1/21/16 1/21/16
- ㉜ Consolidated Rail Corporation 203-456 1/21/16 1/21/16
- ㉝ Consolidated Rail Corporation 203-456 1/21/16 1/21/16
- ㉞ Consolidated Rail Corporation 203-456 1/21/16 1/21/16
- ㉟ Consolidated Rail Corporation 203-456 1/21/16 1/21/16
- ㊱ Consolidated Rail Corporation 203-456 1/21/16 1/21/16
- ㊲ Consolidated Rail Corporation 203-456 1/21/16 1/21/16
- ㊳ Consolidated Rail Corporation 203-456 1/21/16 1/21/16
- ㊴ Consolidated Rail Corporation 203-456 1/21/16 1/21/16
- ㊵ Consolidated Rail Corporation 203-456 1/21/16 1/21/16
- ㊶ Consolidated Rail Corporation 203-456 1/21/16 1/21/16
- ㊷ Consolidated Rail Corporation 203-456 1/21/16 1/21/16
- ㊸ Consolidated Rail Corporation 203-456 1/21/16 1/21/16
- ㊹ Consolidated Rail Corporation 203-456 1/21/16 1/21/16
- ㊺ Consolidated Rail Corporation 203-456 1/21/16 1/21/16
- ㊻ Consolidated Rail Corporation 203-456 1/21/16 1/21/16
- ㊼ Consolidated Rail Corporation 203-456 1/21/16 1/21/16
- ㊽ Consolidated Rail Corporation 203-456 1/21/16 1/21/16
- ㊾ Consolidated Rail Corporation 203-456 1/21/16 1/21/16
- ㊿ Consolidated Rail Corporation 203-456 1/21/16 1/21/16
- ① John A. Bricker 141-153 1/21/16 148-177 1/21/16 1/21/16
- ② Ivan D. Vivian J. Mosier 204-485 1/21/16 1/21/16
- ③ Mary Elmyra Fankhauser 159-500 1/21/16 1/21/16
- ④ Mary E. Fankhauser 216-85 1/21/16 1/21/16
- ⑤ Mary E. Fankhauser 216-85 1/21/16 1/21/16
- ⑥ Lakeville Volunteer Fire Department 199-211 1/21/16 1/21/16
- ⑦ Mary Davenport 129-489 1/21/16 223-240 1/21/16 1/21/16
- ⑧ Lakeville Volunteer Fire Department 232-446 1/21/16 1/21/16
- ⑨ Donald R. E. Kathryn Mackey 235-449 1/21/16 1/21/16

T-20, R-15, Sec. 25  
WASHINGTON TWP.  
SCALE: 1" = 200'

LET IT BE KNOWN, THIS MAP HAS BEEN PREPARED AS A REFERENCE GUIDE TO PROPERTY OWNERSHIP. WE BELIEVE THIS INFORMATION TO BE CORRECT AND CURRENT. HOWEVER, IT IS NOT INTENDED FOR ANY LEGAL USE, WHETHER IT BE IN SALES, TRANSFERS, TRADES, LEASES OF ANY TYPE, ETC., AND DO NOT ACCEPT RESPONSIBILITY FOR ERRORS OF ANY NATURE OR OMISSIONS CONTAINED HEREIN.

PRINTED 1-12-87

TW-300