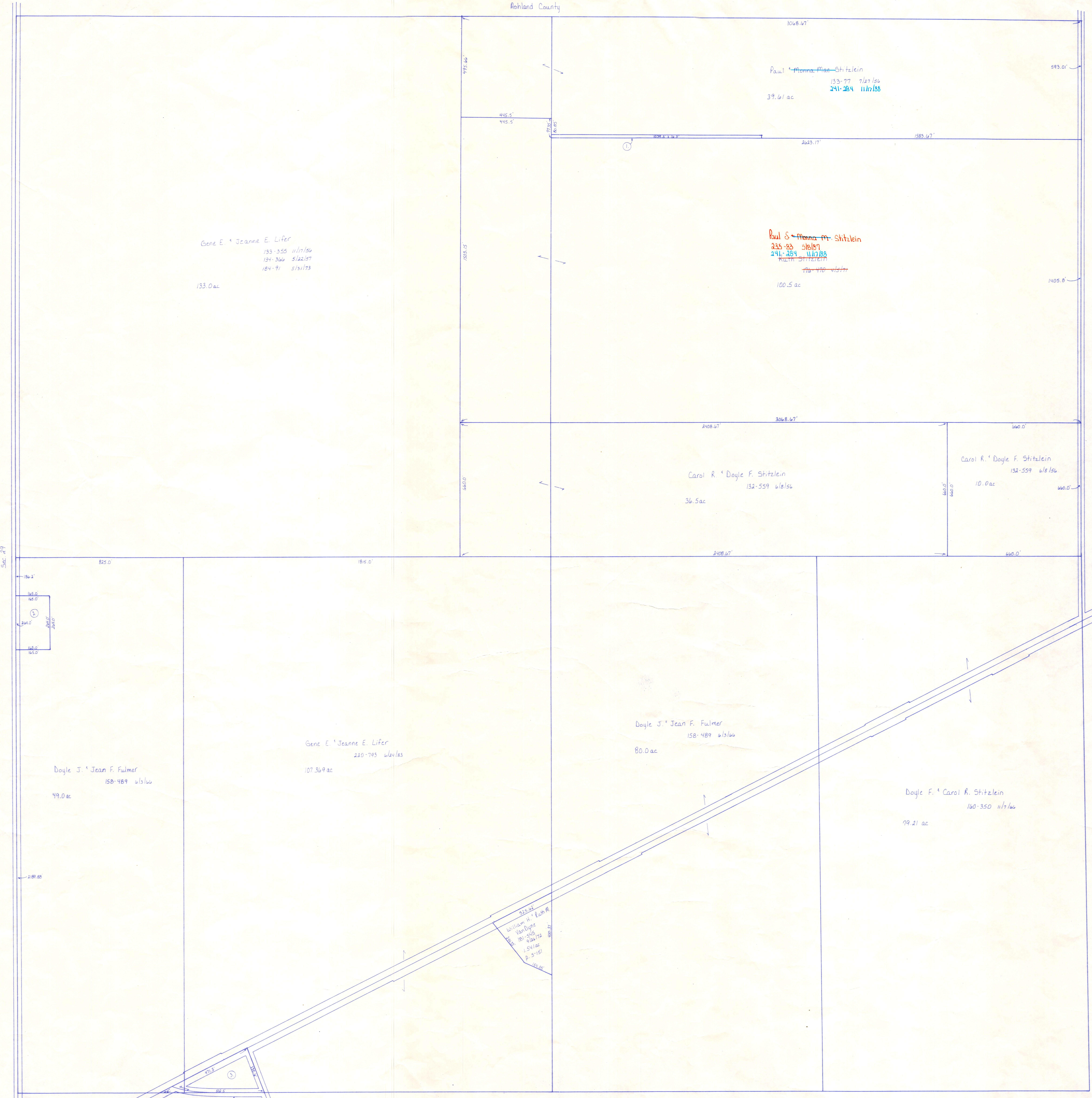


T.H. 440  
Old T.H. 425  
40' E/W

T.H. 441  
Old T.H. 382  
30' E/W

Ashland County



Sec. 29

Sec. 27

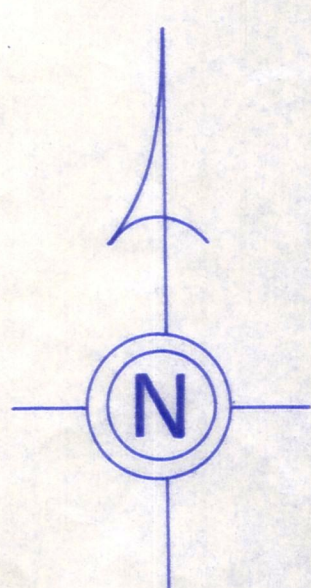
T.H. 440  
Old T.H. 425  
40' E/W

S.R. 3  
E/W varies  
see plans

C.H. 220  
40' E/W

Sec. 53

- ① Paul S. & Emma M. Stitzlein 235-83 5/15/89  
Paul S. Stitzlein 170-710 4/15/77 1.39 ac
- ② Doyle J. & Jean F. Fulmer 158-489 6/15/66 1.0 ac
- ③ Bible Baptist Church of Loudonville 221-99 7/22/83 1.09 ac plat in file



PRINTED  
1-12-87

T-20, R-15, Sec. 28  
WASHINGTON TWP.  
SCALE: 1" = 200'

LET IT BE KNOWN, THIS MAP HAS BEEN PREPARED AS A REFERENCE GUIDE TO PROPERTY OWNERSHIP. WE BELIEVE THIS INFORMATION TO BE CORRECT AND CURRENT, HOWEVER, IT IS NOT INTENDED FOR ANY LEGAL USE, WHETHER IT BE IN SALES, TRANSFERS, TRADES, LEASES OF ANY TYPE, ETC., AND DO NOT ACCEPT RESPONSIBILITY FOR ERRORS OF ANY NATURE OR OMISSIONS CONTAINED HEREIN.

W-15